



# GRAN LAKE THE DESIREE

Approx. 2,950 sq. ft. | 2 stories | 4 bedrooms | 2- to 3-car garage | Plan #J28P



ELEVATION P

## ABOUT THE DESIREE

The Desiree's main-floor layout is anchored by a spacious kitchen with an island, breakfast nook and a mudroom that flows into a two-story great room and formal dining room. A main-floor master suite features a walk-in closet and an optional deluxe bath. A formal living room off the entry can be optioned as a private study.



ELEVATION K



ELEVATION L



ELEVATION M



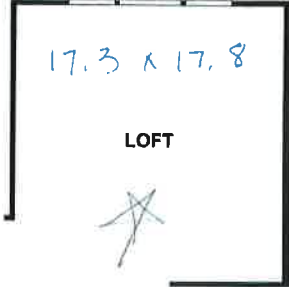
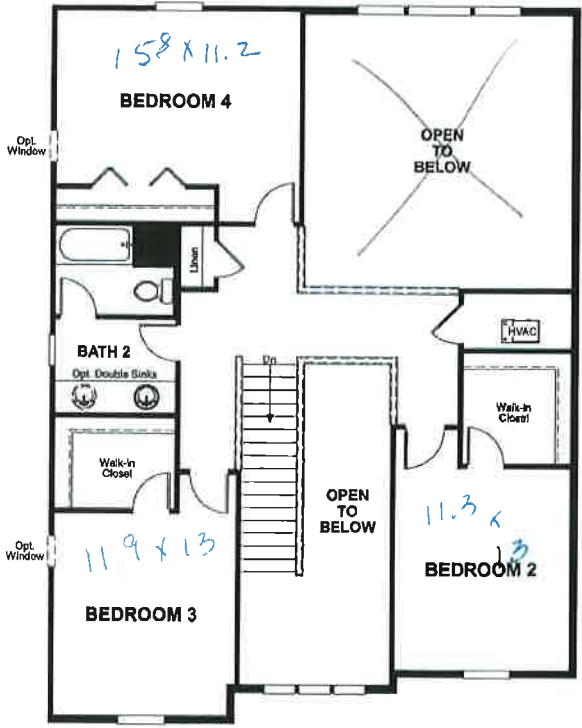
ELEVATION N



SECOND FLOOR



OPT. MASTER BEDROOM 2



OPT. LOFT

**What's a HERS® Index?** HERS stands for Home Energy Rating System, a system created by RESNET® to measure home energy efficiency.\* A Projected HERS index or rating is a computer simulation performed prior to construction by a third-party HERS rater using RESNET-accredited rating software, rated feature and specification data derived from home plans, features and specifications, and other data selected or assumed by the rater. The projected HERS index is approximate and is subject to change without notice. Actual results will vary.