

# FOR SALE

## KINGS ESTATE INDUSTRIAL PARK

Kings Estate Road, St. Augustine, FL 32086



### OFFERING SUMMARY

	\$510,000.00
Number of Units:	26
Price / SF:	\$227.68
Year Built:	2025
Zoning:	IW

### PROPERTY OVERVIEW

Brand new industrial warehouse condos available in St. Augustine, FL in 2025. 26 flex units available offering 2,240 +/- SF up to 11,200 +/- SF and each unit will include one (1) ADA restroom, and one (1) 140 +/- SF office space, approximately 14'x10'. Come bring your cars, RV, and man cave toys and use as a garage warehouse.

This industrial park is situated on 3.89 +/- acres zoned (IW)- industrial warehouse. Constructed with cold form steel structure and tilt-up panel concrete walls. The ceiling height is about 28'-30'. Each warehouse condo will have one (1) grade level 12x16 bay door.

There will be a community loading dock and plenty of parking.

Interior units starting at \$227.68p.s.f. or \$510,000.00, and the three (3) end units are \$250 p.s.f. or \$560,000.00. Estimated delivery April 2026.

### PROPERTY HIGHLIGHTS

- Brand new tilt-up construction warehouse/flex condos
- High ceilings 28'-30'
- Community loading dock

### PRESENTED BY:

**AMANDA KINKADE**

904.635.6376

amanda@kinkadecommercial.com

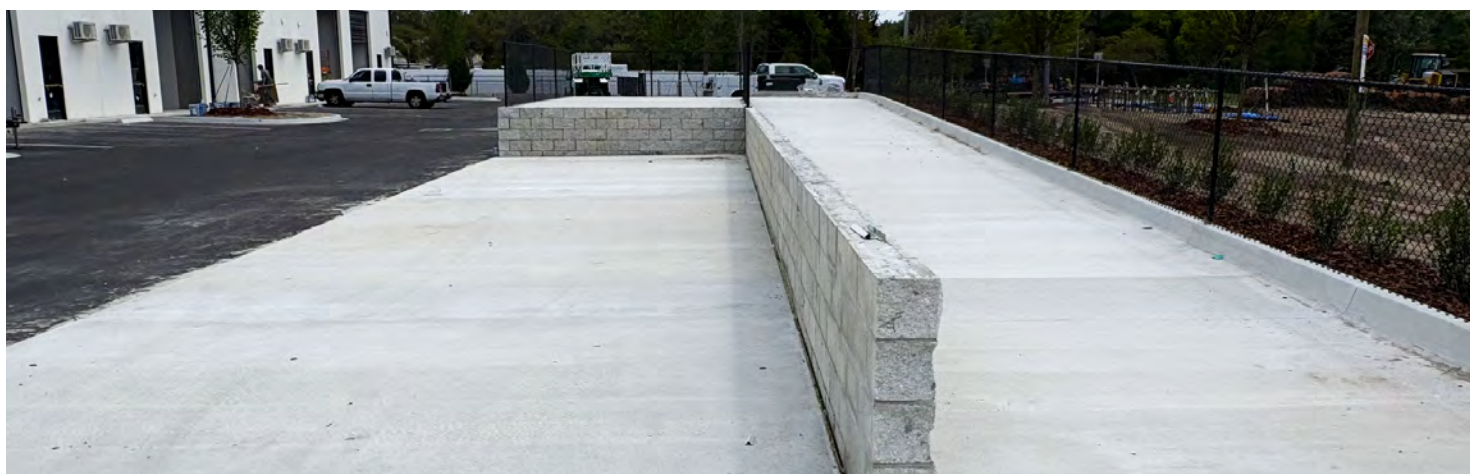
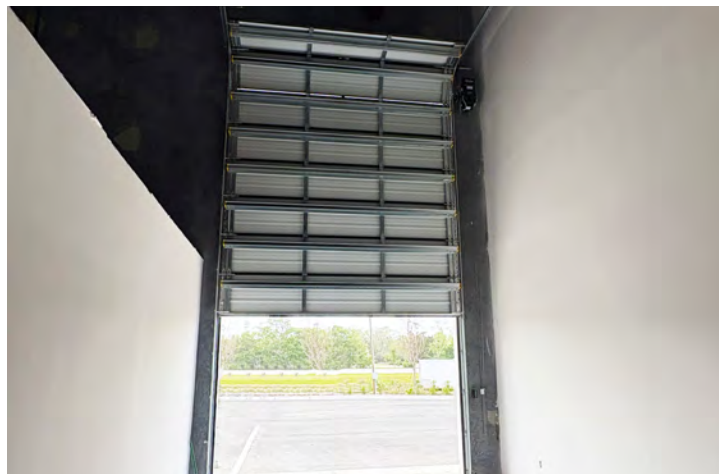
# FOR SALE

## KINGS ESTATE INDUSTRIAL PARK



2929 Plummer Cove Rd., Suite 2  
Jacksonville, FL 32223

Kings Estate Road, St. Augustine, FL 32086



*PRESENTED BY:*

**AMANDA KINKADE**

904.635.6376

[amanda@kinkadecommercial.com](mailto:amanda@kinkadecommercial.com)

ADDITIONAL PHOTOS

# CUSTOM INTERIOR BUILDOUTS

## DEVELOPER WILL BUILD-TO-SUIT -GARAGE CONDOS



2929 Plummer Cove Rd., Suite 2  
Jacksonville, FL 32223

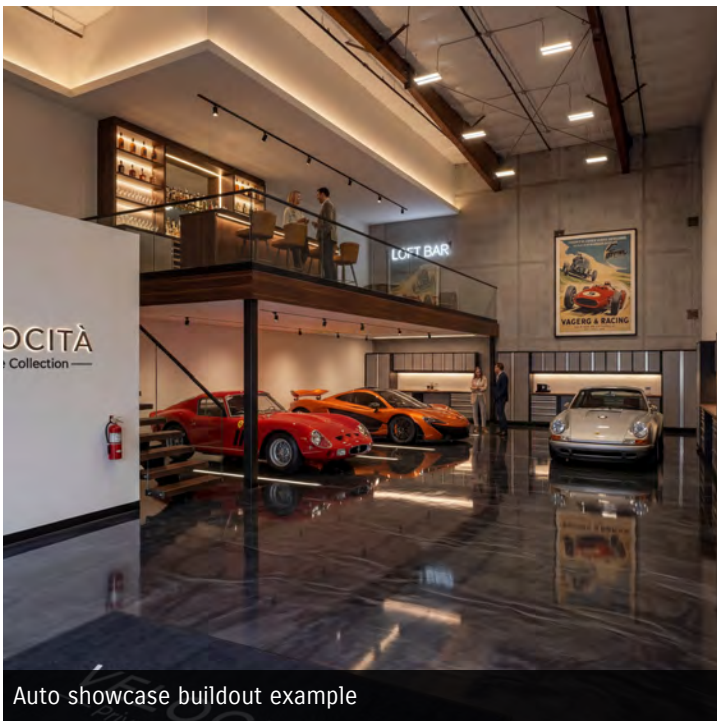
Kings Estate Rd Saint Augustine, FL 32086



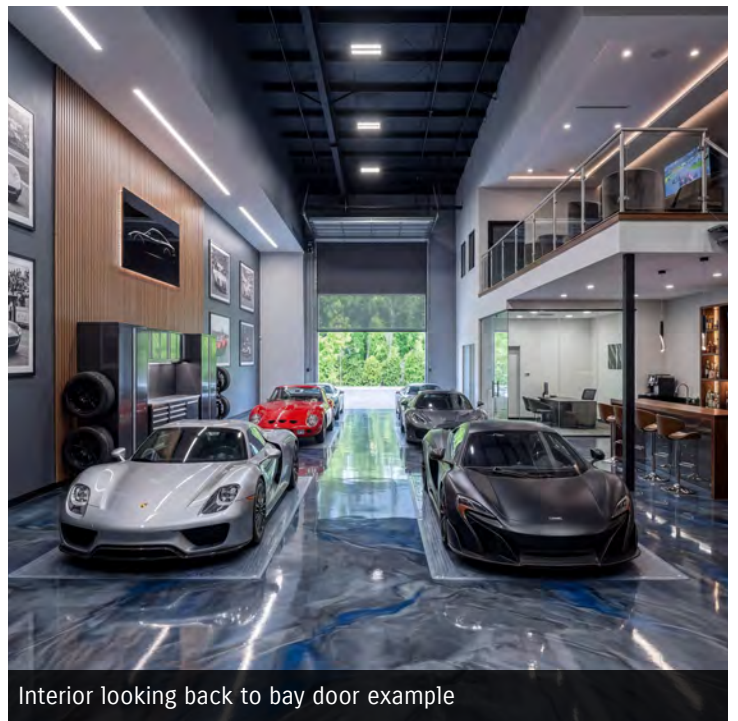
Double-unit "man cave" buildout example



Single unit buildout example



Auto showcase buildout example



Interior looking back to bay door example

PRESENTED BY:

AMANDA KINKADE

904.635.6376

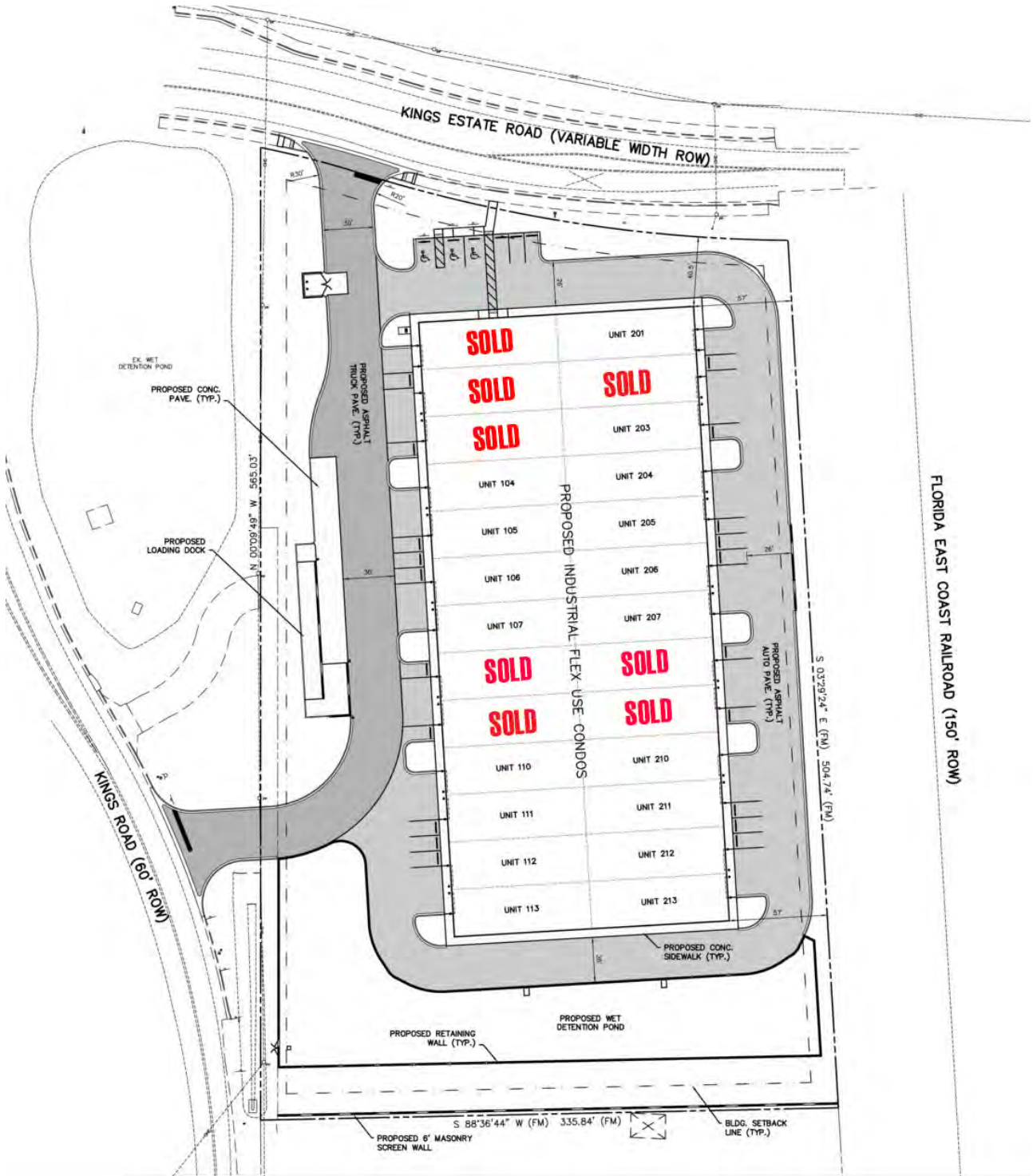
amanda@kinkadecommercial.com

ADDITIONAL PHOTOS

# FOR SALE

## KINGS ESTATE INDUSTRIAL PARK

Kings Estate Road, St. Augustine, FL 32086



PRESENTED BY:

AMANDA KINKADE

904.635.6376

amanda@kinkadecommercial.com

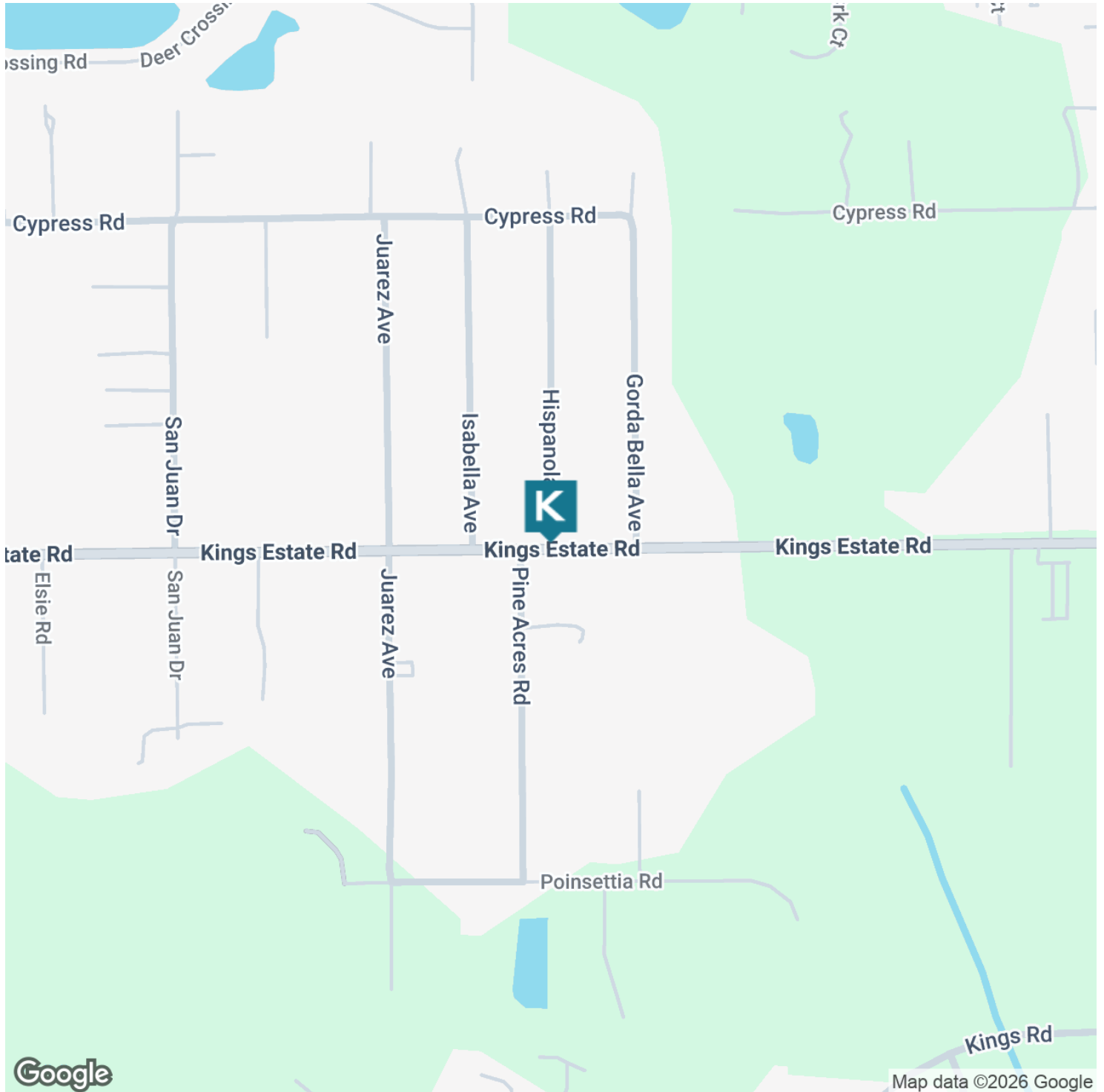
# FOR SALE

## KINGS ESTATE INDUSTRIAL PARK



2929 Plummer Cove Rd., Suite 2  
Jacksonville, FL 32223

Kings Estate Road, St. Augustine, FL 32086



PRESENTED BY:

AMANDA KINKADE

904.635.6376

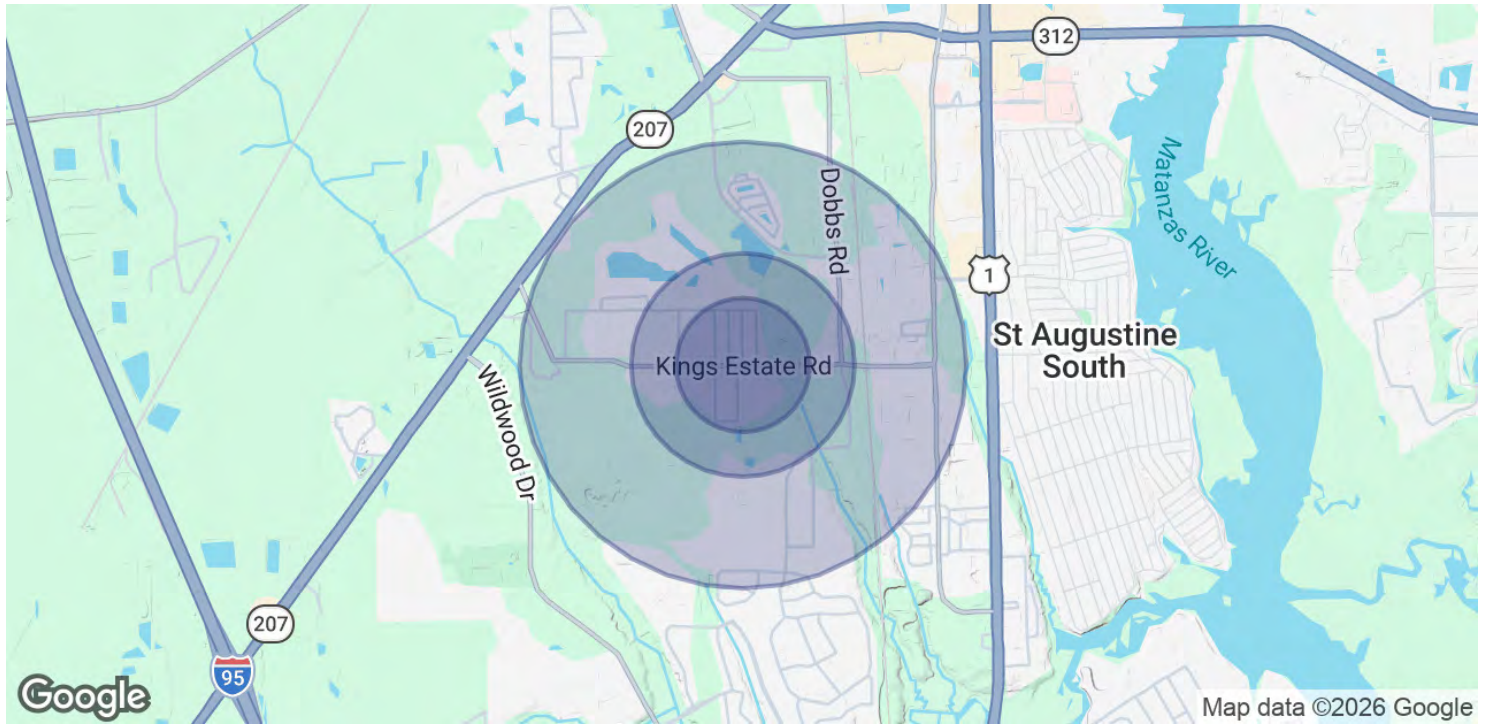
amanda@kinkadecommercial.com

LOCATION MAP

# FOR SALE

## KINGS ESTATE INDUSTRIAL PARK

Kings Estate Road, St. Augustine, FL 32086



<b>POPULATION</b>	<b>0.3 MILES</b>	<b>0.5 MILES</b>	<b>1 MILE</b>
Total Population	531	1,252	4,905
Average Age	45	45	45
Average Age (Male)	44	45	45
Average Age (Female)	45	45	46

<b>HOUSEHOLDS &amp; INCOME</b>	<b>0.3 MILES</b>	<b>0.5 MILES</b>	<b>1 MILE</b>
Total Households	222	522	2,015
# of Persons per HH	2.4	2.4	2.4
Average HH Income	\$86,966	\$88,379	\$89,135
Average House Value	\$354,545	\$361,920	\$375,128

2020 American Community Survey (ACS)

PRESENTED BY:

**AMANDA KINKADE**

904.635.6376

amanda@kinkadecommercial.com