

JEFFERSON COUNTY
Community Development Department

66 S.E. "D" St.
Madras, Oregon 97741
Fax: (503) 475-4270



NEW ADDRESS APPLICATION

Recorded Owner NEKETIN, Nick Phone# _____ Bus# _____
Present Address 84766 Didion Ln. City Milton-Freewater State OR Zip 97862
Legal: Twn: 13 Range 12 Section 21AD Tax Lot# 2400
NEW ADDRESS: 14731 SW SWANNIES PLACE; CRR
Total Fee: \$25.00 Receipt #: R9701024 By: SA Date 6-24-97
Applicant's Signature Lee Alley Date 6-24-97
Owner's Signature _____ Date _____

**JEFFERSON COUNTY ENVIRONMENTAL SERVICES
66 S.E. D STREET, SUITE A
MADRAS, OREGON 97741
(541)475-4453**

**CERTIFICATE OF SATISFACTORY COMPLETION
ON-SITE SEWAGE DISPOSAL SYSTEM**

Permit No: **97S 0073**

Owner's Name: **Nick Neketin**

Legal Desc: **Tw.13S- R..12E-Sec 21AD -TL. 2400**

Final Inspection Date:
*Precover inspection waived pursuant
to OAR 340, Division 71, September 22, 1997*

Installer: **Back Street Construction**

Address: **14731 SW Swannies Place,
Crooked River Ranch**

Inspected by: **Diane Naglee, R.S.**

Type of System: **ALTERNATIVE
CAPPING FILL**

*IN ACCORDANCE WITH OREGON REVISED STATUTE 454.665, THIS CERTIFICATE IS
ISSUED AS EVIDENCE OF SATISFACTORY COMPLETION OF AN ON-SITE SEWAGE
DISPOSAL SYSTEM AT THE LOCATION IDENTIFIED ABOVE.*

*ISSUANCE OF THIS CERTIFICATE DOES NOT CONSTITUTE A WARRANTY OR
GUARANTEE THAT THIS ON-SITE DISPOSAL SYSTEM WILL FUNCTION INDEFINITELY
WITHOUT FAILURE.*

****SEE ATTACHED PLOT PLAN**

****LANDSCAPE DRAINFIELD WITH VEGETATION - REQUIRED.**

*Mailed
SEP 23 1997
CC BRP*



Environmental Specialist

Diane Naglee, R.S.

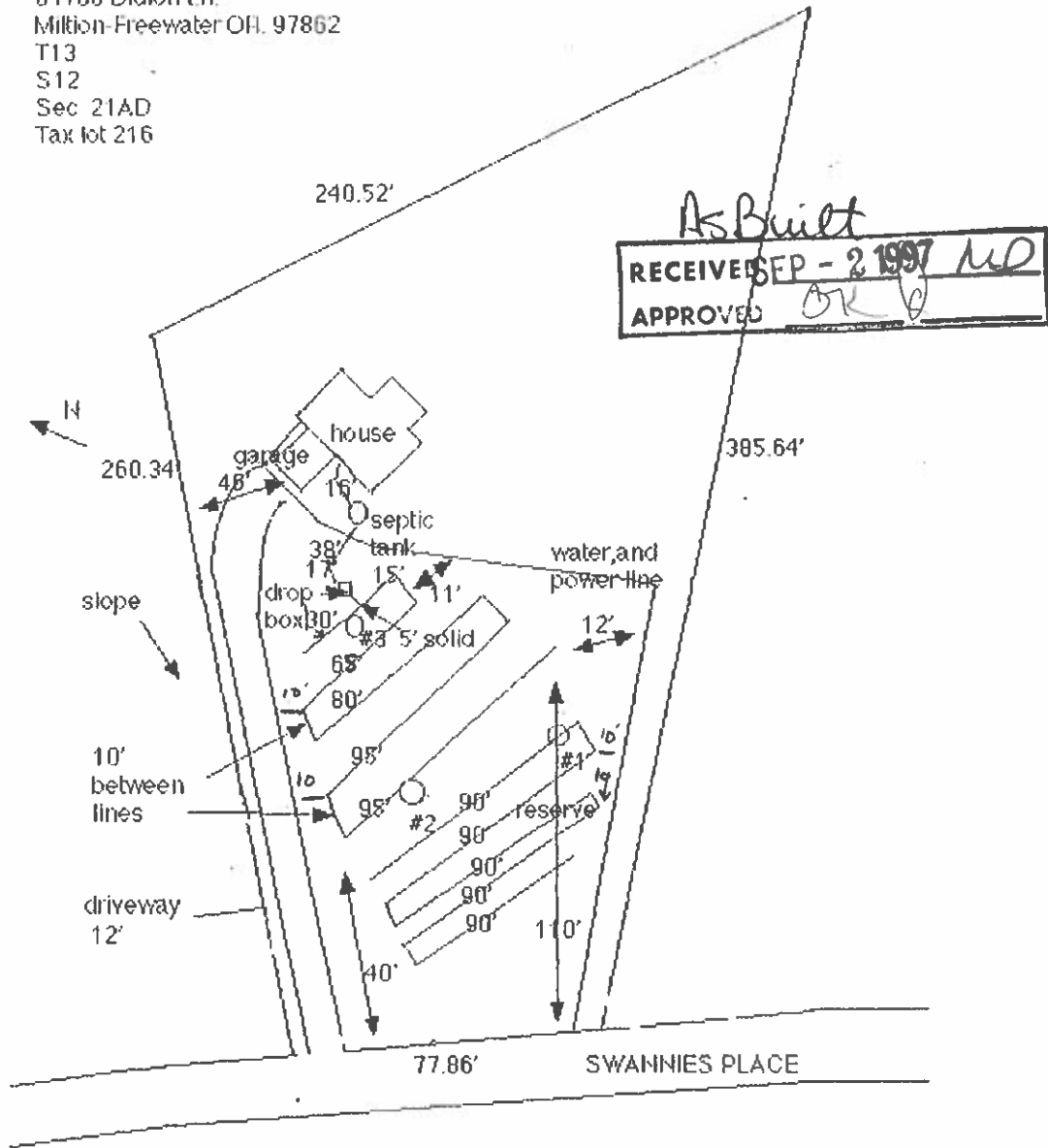
September 22, 1997
Date

AS-BUILT PLOT PLAN
ON-SITE SEWAGE SYSTEM INSTALLATION RECORD
 Satisfies ORS 454.665

Property Owner Nick Neketin Permit No. 97S 0073
 Location: Twp 13 S. R. 12 E. Sec. 21AD Tax Lot 2400
 Scale Not Necessary

****SHOW ALL WELLS & SET BACKS TO PROPERTY LINE; HEADER PIPES; NORTH; & DWELLING AREA.****

Nick Neketin
 84766 Didion Ln.
 Milton-Freewater OH. 97862
 T13
 S12
 Sec 21AD
 Tax lot 216



ARE YOU READY FOR AN INSPECTION NOW? yes

"I certify that the construction and installation of this system was in accordance with the permit and rules of the Commission."

Back Street Const. Corp. Maureen Alley
 Installer's signature

35585
 DEQ License Number

Installer's Name and Address:
P.O. Box 350

Date System Completed:

Culver, Oregon 97734

8/29/97

Reminder: You also need to submit a Materials List and Watertightness test.

**JEFFERSON COUNTY ENVIRONMENTAL SERVICES
ON-SITE SEWAGE DISPOSAL SYSTEM INSPECTION WORKSHEET**

Cap fill OK
BRK

Permit No. 9750073 Date Rec'd SEP - 2 1997 By Lee 1st Insp. W. J. WOOD Corr. Notice
 Owner N. Neketin Date Rec'd _____ By _____ 2nd Insp. _____ Corr. Notice
 Installer Buckstreet Date Rec'd _____ By _____ 3rd Insp. _____ Corr. Notice
 Legal Description T. 13 R. 12 Sec. 21AD TaxLot 2400 Inspector DNagle

ITEM	APPROVED	NOT APPROVED
Septic Tank (Vol.) _____ Brand _____ Material _____ <input type="checkbox"/> <input type="checkbox"/>
Riser _____ Concrete <input type="checkbox"/> Fiberglass <input type="checkbox"/> <input type="checkbox"/> Not Applicable; tank at or above ground surface. <input type="checkbox"/> <input type="checkbox"/>
Effluent Sewer _____ <input type="checkbox"/> <input type="checkbox"/>
Distribution /Drop Boxes Material _____ Brand _____ <input type="checkbox"/> <input type="checkbox"/>
Header Lines _____ <input type="checkbox"/> <input type="checkbox"/>
Absorption Facility (ft) _____ Serial _____ Equal _____ Loop _____ Combo _____ <input type="checkbox"/> <input type="checkbox"/>
Filter Fabric _____ <input type="checkbox"/> <input type="checkbox"/>
Pressure Line/Pressure piping _____ <input type="checkbox"/> <input type="checkbox"/>
Capping Fill (depth inches) _____ <input type="checkbox"/> <input type="checkbox"/>
As-Built Plot Plan _____ <input type="checkbox"/> <input type="checkbox"/>
Materials List _____ <input type="checkbox"/> <input type="checkbox"/>
Watertightness test _____ <input type="checkbox"/> <input type="checkbox"/>
Other _____ <input type="checkbox"/> <input type="checkbox"/>

NOTES

JEFFERSON COUNTY COMMUNITY DEVELOPMENT DEPARTMENT
ENVIRONMENTAL SERVICES
MATERIALS LIST

Owner's Name Nick Nehetin

Permit Number 975 0073

Township 13S Range 12 E Section 21AD

TaxLot 2400

QUANTITY/SIZE

TYPE/MANUFACTURER

1 Septic Tank

Michaels' Precast Concrete

Septic tank riser

Distribution box

1 Drop Box(es)

Tuf-TITE 11x11

Infiltrator (lineal footage) Chambers

Inspection Ports (number) _____

380 3" or (4") perforated drainfield pipe (Lineal footage)

PSP 4" COEX Hope

45 3" or (4") solid header pipe

PSP 4" COEX Hope

55' Effluent line

3034 or ABS Schedule 40

380' Filter fabric

REEMAY

4" Rubber couplers

1 4" Drainfield pipe tees

SEP - 2, 1997

Clean out tees

8 4" 90° elbows

6 4" 45° elbows

4" Plugs

4" 22.5 elbows

4" caps

380 yds Drain rock

Williams Aggregate inc.

Other/Notes: _____

TO BE SUBMITTED TO JEFFERSON COUNTY ENVIRONMENTAL SERVICES AT THE TIME OF SYSTEM COMPLETION.

SEPTIC TANK

CERTIFICATION OF WATERTIGHTNESS

Owner's name Nick Neketiv

Permit Number 975 0073

Location of septic tank: Twp. 13 S, Rge. 12 E., Sec. 21 AD Tax Lot 2400

Date of Water Test: 8-28 1997

I hereby certify that I conducted a water test on the septic tank located at the above referenced property and found that the tank meets watertightness requirements as described in OAR 340-73-025.

Back Street Construction Corp
Marilyn Alley
Signature

****Watertightness Test:** Fill tank to a point at least two (2) inches above the point of riser connection to the top of the tank. During the test, there shall be no more than a one (1) gallon leakage over a 24 hour period. (Approximately 2 inch drop in water level) *Water must remain in the tank until pre-cover inspection has been approved.*

**** IMPORTANT:** Contact tank manufacturer for amount of backfill required around tank to prevent damage during water test.

JEFFERSON COUNTY ENVIRONMENTAL SERVICES

**66 S.E. D STREET, SUITE
MADRAS, OREGON 97741
(541)475-4453**

**CONSTRUCTION/INSTALLATION PERMIT
ON-SITE SEWAGE DISPOSAL SYSTEM**

NEW CONSTRUCTION PERMITSEE ATTACHED PLOT PLAN**

Permit No: 97 S 0073

Date Issued: June 20, 1997

Owner: Nick Neketin

Address: 14731 SW Swannies

Legal Desc: 13S - 12E -21AD -2400

Crooked River Ranch

CRR phase 8, lot 216

Expiration Date: June 20, 1998

8/4/97
cap sample
OK

Type of System: **ALTERNATIVE/CAPPING FILL**

SPECIFICATIONS

Design Sewage Flow: 450gallons/day

Tank Volume: 1000 gallon Disposal trenches required SERIAL distribution system

Linear Feet Required: 375 Square Feet: 750 Minimum Distance Between Trenches: 10 feet on center.

Maximum Trench Depth: 17 inches Minimum Trench Depth: 17 inches

Total Rock Depth: 12 inches Below pipe: 6 inches Above pipe: 2 inches

****SEPTIC TANK RISER REQUIRED IF TOP OF TANK IS BELOW GROUND SURFACE.**

****FILTER FABRIC REQUIRED.**

****MINIMUM OF ONE (1) DROP BOX REQUIRED.**

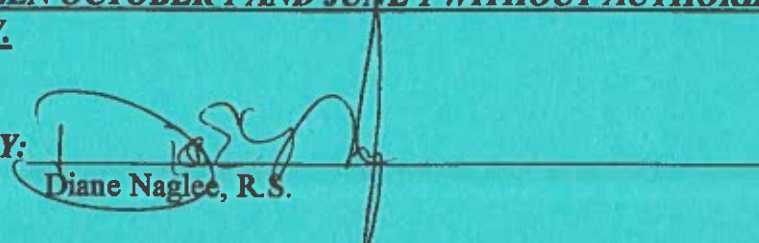
****ELEVEN (11) INCHES OF CAPPING FILL REQUIRED FOR TOTAL OF SIXTEEN (16) ABOVE GRAVEL.**

****SUBMIT PROPOSED CAPPING FILL SAMPLE PRIOR TO PRECOVER INSPECTION.**

****NO CONSTRUCTION BETWEEN OCTOBER 1 AND JUNE 1 WITHOUT AUTHORIZATION FROM JEFFERSON COUNTY.**

Mailed
JUN 23 1997
C. B. T.
Boelester

PERMIT ISSUED BY:


Diane Naglee, R.S.

**PRE-COVER INSPECTION REQUIRED. CONTACT: Environmental Services (541) 475-4453
or Fax (541) 475-4270**

****As-Built Plot Plan, Materials List and Watertightness test are required before pre-cover inspection will be scheduled.**

PERMITS ARE NOT TRANSFERABLE

ALL WORK TO CONFORM TO OREGON ADMINISTRATIVE RULES, CHAPTER 340. WORK SHALL BE DONE BY PROPERTY OWNER OR BY LICENSED SEWAGE DISPOSAL SERVICE. MAKE NO CHANGES IN LOCATION OR SPECIFICATIONS WITHOUT WRITTEN APPROVAL.

JEFFERSON COUNTY COMMUNITY DEVELOPMENT DEPARTMENT
ENVIRONMENTAL SERVICES
(541) 475-4453

APPLICATION FOR CONSTRUCTION/INSTALLATION PERMIT
FOR
SUBSURFACE SEWAGE DISPOSAL SYSTEM

Please Print:

Nick NEKETIN
(Recorded Property Owner's Name)

(Applicant's Name if different from owner)

14731 SW Swannies Pl.
(Address of Property)

Township 13 Range 12 Section 27AD
Tax Lot No. ~~310~~ 2400

C.R.R.
(City)

Property/Lot Size _____

For Property in Subdivisions: CRK
(Subdivision Name)

8 (Phase) 216 (Block No.) 216 (Lot No.)

Proposed Facility: 3 Single Family Dwelling
(no. of bedrooms)

Other _____
Uses other than Single Family Dwelling requires additional information.

Existing Facility: _____ Single Family Dwelling
(no. of bedrooms)

Water Supply: (circle one)
Public
Existing Well/Spring
Proposed Well/Spring
Cistern

DEQ Installer Name: Back Street

HAVE YOU USED THE CHECKLIST FOR YOUR PLOT PLAN?

By my signature, I certify that the information I have furnished is correct, and hereby grant the Department of Environmental Quality and it's authorized agent permission to enter onto the above described property for the purpose of this application.

Back Street Const Corp
Don Alley
(Signature of Owner or Authorized Representative)

5-11-97
(Date)

Owner's Mailing Address

Applicant's Mailing Address(if different)

10375 SW Highland Dr
Portland OR 97224

Phone _____ Bus./Cell _____

Phone _____ Bus./Cell _____

This application will be returned if it is not filled out completely and accompanied by the appropriate fee and attachments required in the guidance packet.

FOR OFFICE USE

Date Received JUN 12 1997

Received by UD

Date LUC sent 1 7 1997 Date LUC received 6/18

Permit Number 9750073

Jefferson County
Land Use Compatibility Statement
For On-Site Sewage Disposal Systems

Nick Neketin

14731 SW Swannies

Recorded Property Owner's Name

Mailing Address

CRR

City/State

Zip Code

Telephone

Property Location:

13 S 12 E 21AD

2400

Township

Range

Section

Tax Lot

Property Location
if in Subdivision

CRR

8

216

Subdivision Name

Phase

Block

Lot

Proposed Land Use:

Please check if: Repair to existing System; Alteration or

Authorization to Connect to existing system

Single Family Dwelling

Non-farm use (hardship, etc.)

Duplex

Specify

Primary farm dwelling

Commerical facility; farm use

Accessory farm dwelling

Commerical facility; non-farm

Travelers Accommodation

Specify

Seasonal dwelling/no plumbing

Other: Describe

STATEMENT OF COMPATIBILITY FROM APPROPRIATE LAND USE AUTHORITY
For Office Use Only

Property's Zoning Designation CTCR-R

The Above Proposal has been reviewed and found to be:

Compatible with the LCDC Acknowledged Comprehensive Plan

Not Compatible with the LCDC Acknowledged Comprehensive Plan

or

Compatible with the Statewide Planning Goals

Not Compatible with the Statewide Planning Goals

REASON FOR FINDING OF COMPATIBILITY/INCOMPATIBILITY:

SINGLE FAMILY DWELLING OK AT CRR

Property is Located: (Check one)

Inside City

Inside Urban Growth Boundary

Outside Urban

Outside City Limits

Growth Boundary

Jefferson County

Land Use Authority

Signature of Planning Authority

S. Michael O'Neal

Date

6/17/97

13 12 21AD

0 1 JUL 1996

JEFFERSON COUNTY

CANCELLED N

1000
1400
1500
2600
2700

LANDMENTS
ALL LOTS SHALL HAVE A 100.0 FT.
EASEMENT ON ALL REAR LOT LINES
FOR UTILITY, WALKING, AND
RIDING, AND A 100 FOOT CURBENT
ON ALL SIDE LOT LINES FOR
CUTLIES

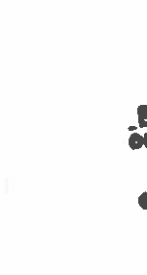
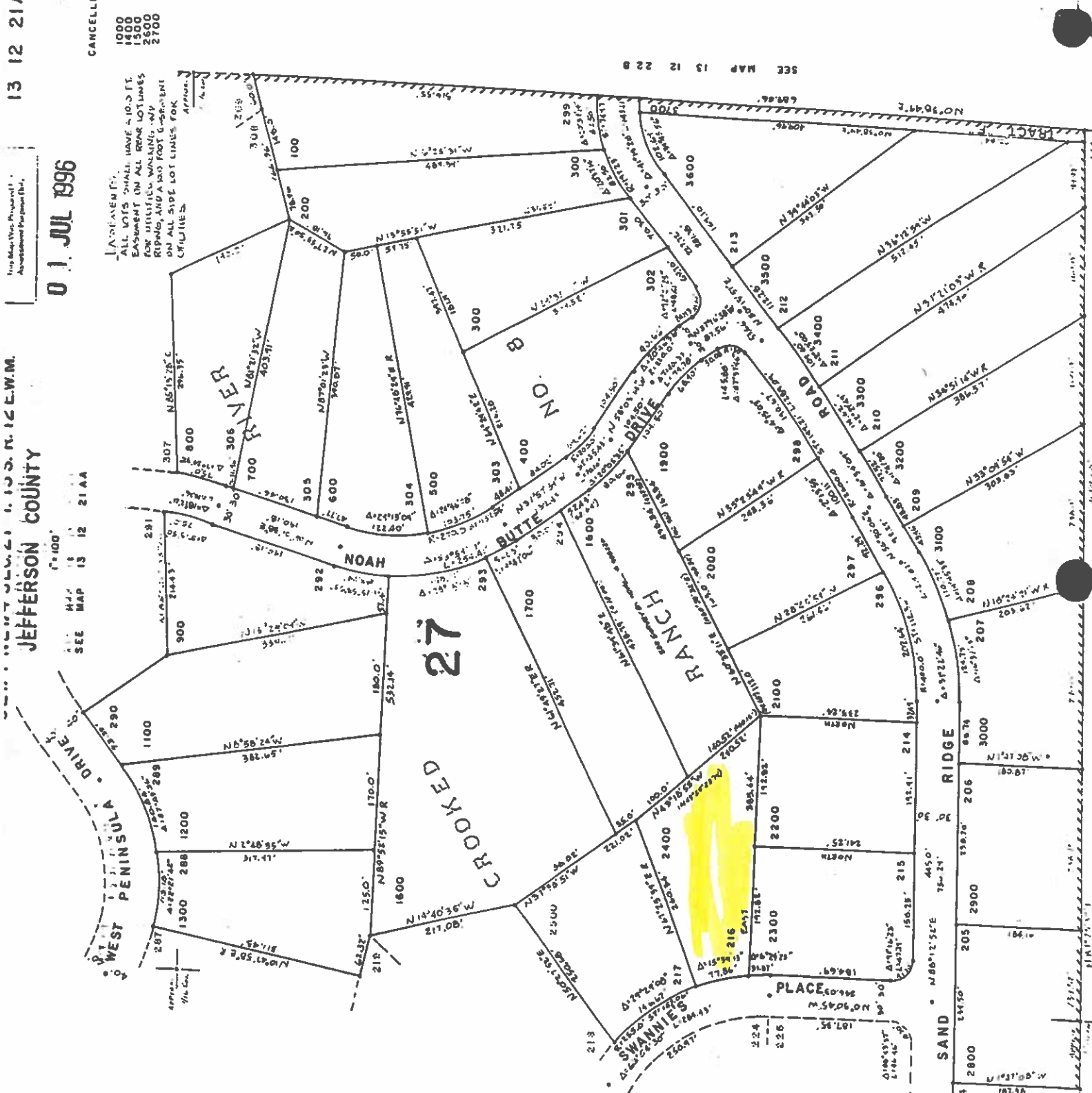
WEST PENINSULA DRIVE

NOAH

CROOKED 27

RIDGE

SAND



RECEIVED
MAY 17 1996
DEPT. OF REVENUE
STATE OF OREGON

SEE MAP 13 12 21 AC

SEE MAP 13 12 22 B

SEE MAP 13 12 21 AA

SEE MAP 13 12 21 AD

SEE MAP 13 12 21 AE

SEE MAP 13 12 21 AF

SEE MAP 13 12 21 AG

SEE MAP 13 12 21 AH

SEE MAP 13 12 21 AI

SEE MAP 13 12 21 AJ

SEE MAP 13 12 21 AK

SEE MAP 13 12 21 AL

SEE MAP 13 12 21 AM

SEE MAP 13 12 21 AN

SEE MAP 13 12 21 AO

SEE MAP 13 12 21 AP

SEE MAP 13 12 21 AQ

SEE MAP 13 12 21 AR

SEE MAP 13 12 21 AS

SEE MAP 13 12 21 AT

SEE MAP 13 12 21 AU

SEE MAP 13 12 21 AV

SEE MAP 13 12 21 AW

SEE MAP 13 12 21 AX

SEE MAP 13 12 21 AY

SEE MAP 13 12 21 AZ

SEE MAP 13 12 21 BA

SEE MAP 13 12 21 BB

SEE MAP 13 12 21 BC

SEE MAP 13 12 21 BD

SEE MAP 13 12 21 BE

SEE MAP 13 12 21 BF

SEE MAP 13 12 21 BG

SEE MAP 13 12 21 BH

SEE MAP 13 12 21 BI

SEE MAP 13 12 21 BJ

SEE MAP 13 12 21 BK

SEE MAP 13 12 21 BL

SEE MAP 13 12 21 BM

SEE MAP 13 12 21 BN

SEE MAP 13 12 21 BO

SEE MAP 13 12 21 BP

SEE MAP 13 12 21 BQ

SEE MAP 13 12 21 BR

SEE MAP 13 12 21 BS

SEE MAP 13 12 21 BT

SEE MAP 13 12 21 BU

SEE MAP 13 12 21 BV

SEE MAP 13 12 21 BW

SEE MAP 13 12 21 BX

SEE MAP 13 12 21 BY

SEE MAP 13 12 21 BZ

SEE MAP 13 12 21 CA

SEE MAP 13 12 21 CB

SEE MAP 13 12 21 CC

SEE MAP 13 12 21 CD

SEE MAP 13 12 21 CE

SEE MAP 13 12 21 CF

SEE MAP 13 12 21 CG

SEE MAP 13 12 21 CH

SEE MAP 13 12 21 CI

SEE MAP 13 12 21 CJ

SEE MAP 13 12 21 CK

SEE MAP 13 12 21 CL

SEE MAP 13 12 21 CM

SEE MAP 13 12 21 CN

SEE MAP 13 12 21 CO

SEE MAP 13 12 21 CP

SEE MAP 13 12 21 CQ

SEE MAP 13 12 21 CR

SEE MAP 13 12 21 CS

SEE MAP 13 12 21 CT

SEE MAP 13 12 21 CU

SEE MAP 13 12 21 CV

SEE MAP 13 12 21 CW

SEE MAP 13 12 21 CX

SEE MAP 13 12 21 CY

SEE MAP 13 12 21 CZ

SEE MAP 13 12 21 DA

SEE MAP 13 12 21 DB

SEE MAP 13 12 21 DC

SEE MAP 13 12 21 DD

SEE MAP 13 12 21 DE

SEE MAP 13 12 21 DF

SEE MAP 13 12 21 DG

SEE MAP 13 12 21 DH

SEE MAP 13 12 21 DI

SEE MAP 13 12 21 DJ

SEE MAP 13 12 21 DK

SEE MAP 13 12 21 DL

SEE MAP 13 12 21 DM

SEE MAP 13 12 21 DN

SEE MAP 13 12 21 DO

SEE MAP 13 12 21 DP

SEE MAP 13 12 21 DQ

SEE MAP 13 12 21 DR

SEE MAP 13 12 21 DS

SEE MAP 13 12 21 DT

SEE MAP 13 12 21 DU

SEE MAP 13 12 21 DV

SEE MAP 13 12 21 DW

SEE MAP 13 12 21 DX

SEE MAP 13 12 21 DY

SEE MAP 13 12 21 DZ

SEE MAP 13 12 21 EA

SEE MAP 13 12 21 EB

SEE MAP 13 12 21 EC

SEE MAP 13 12 21 ED

SEE MAP 13 12 21 EE

SEE MAP 13 12 21 EF

SEE MAP 13 12 21 EG

SEE MAP 13 12 21 EH

SEE MAP 13 12 21 EI

SEE MAP 13 12 21 EJ

SEE MAP 13 12 21 EK

SEE MAP 13 12 21 EL

SEE MAP 13 12 21 EM

SEE MAP 13 12 21 EN

SEE MAP 13 12 21 EO

SEE MAP 13 12 21 EP

SEE MAP 13 12 21 EQ

SEE MAP 13 12 21 ER

SEE MAP 13 12 21 ES

SEE MAP 13 12 21 ET

SEE MAP 13 12 21 EU

SEE MAP 13 12 21 EV

SEE MAP 13 12 21 EW

SEE MAP 13 12 21 EX

SEE MAP 13 12 21 EY

SEE MAP 13 12 21 EZ

SEE MAP 13 12 21 FA

SEE MAP 13 12 21 FB

SEE MAP 13 12 21 FC

SEE MAP 13 12 21 FD

SEE MAP 13 12 21 FE

SEE MAP 13 12 21 FF

SEE MAP 13 12 21 FG

SEE MAP 13 12 21 FH

SEE MAP 13 12 21 FI

SEE MAP 13 12 21 FJ

SEE MAP 13 12 21 FK

SEE MAP 13 12 21 FL

SEE MAP 13 12 21 FM

SEE MAP 13 12 21 FN

SEE MAP 13 12 21 FO

SEE MAP 13 12 21 FP

SEE MAP 13 12 21 FQ

SEE MAP 13 12 21 FR

SEE MAP 13 12 21 FS

SEE MAP 13 12 21 FT

SEE MAP 13 12 21 FU

SEE MAP 13 12 21 FV

SEE MAP 13 12 21 FW

SEE MAP 13 12 21 FX

SEE MAP 13 12 21 FY

SEE MAP 13 12 21 FZ

SEE MAP 13 12 21 GA

SEE MAP 13 12 21 GB

SEE MAP 13 12 21 GC

SEE MAP 13 12 21 GD

SEE MAP 13 12 21 GE

SEE MAP 13 12 21 GF

SEE MAP 13 12 21 GG

SEE MAP 13 12 21 GH

SEE MAP 13 12 21 GI

SEE MAP 13 12 21 GJ

SEE MAP 13 12 21 GK

SEE MAP 13 12 21 GL

SEE MAP 13 12 21 GM

SEE MAP 13 12 21 GN

SEE MAP 13 12 21 GO

SEE MAP 13 12 21 GP

SEE MAP 13 12 21 GQ

SEE MAP 13 12 21 GR

SEE MAP 13 12 21 GS

SEE MAP 13 12 21 GT

SEE MAP 13 12 21 GU

SEE MAP 13 12 21 GV

SEE MAP 13 12 21 GW

SEE MAP 13 12 21 GX

SEE MAP 13 12 21 GY

SEE MAP 13 12 21 GZ

SEE MAP 13 12 21 HA

SEE MAP 13 12 21 HB

SEE MAP 13 12 21 HC

SEE MAP 13 12 21 HD

SEE MAP 13 12 21 HE

SEE MAP 13 12 21 HF

SEE MAP 13 12 21 HG

SEE MAP 13 12 21 HH

SEE MAP 13 12 21 HI

SEE MAP 13 12 21 HJ

SEE MAP 13 12 21 HK

SEE MAP 13 12 21 HL

SEE MAP 13 12 21 HM

SEE MAP 13 12 21 HN

SEE MAP 13 12 21 HO

SEE MAP 13 12 21 HP

SEE MAP 13 12 21 HQ

SEE MAP 13 12 21 HR

SEE MAP 13 12 21 HS

SEE MAP 13 12 21 HT

SEE MAP 13 12 21 HU

SEE MAP 13 12 21 HV

SEE MAP 13 12 21 HW

SEE MAP 13 12 21 HX

SEE MAP 13 12 21 HY

SEE MAP 13 12 21 HZ

SEE MAP 13 12 21 IA

SEE MAP 13 12 21 IB

SEE MAP 13 12 21 IC

SEE MAP 13 12 21 ID

SEE MAP 13 12 21 IE

SEE MAP 13 12 21 IF

SEE MAP 13 12 21 IG

SEE MAP 13 12 21 IH

SEE MAP 13 12 21 II

SEE MAP 13 12 21 IJ

SEE MAP 13 12 21 IK

SEE MAP 13 12 21 IL

SEE MAP 13 12 21 IM

SEE MAP 13 12 21 IN

SEE MAP 13 12 21 IO

SEE MAP 13 12 21 IP

SEE MAP 13 12 21 IQ

SEE MAP 13 12 21 IR

SEE MAP 13 12 21 IS

SEE MAP 13 12 21 IT

SEE MAP 13 12 21 IU

SEE MAP 13 12 21 IV

SEE MAP 13 12 21 IW

SEE MAP 13 12 21 IX

SEE MAP 13 12 21 IY

SEE MAP 13 12 21 IZ

SEE MAP 13 12 21 JA

SEE MAP 13 12 21 JB

SEE MAP 13 12 21 JC

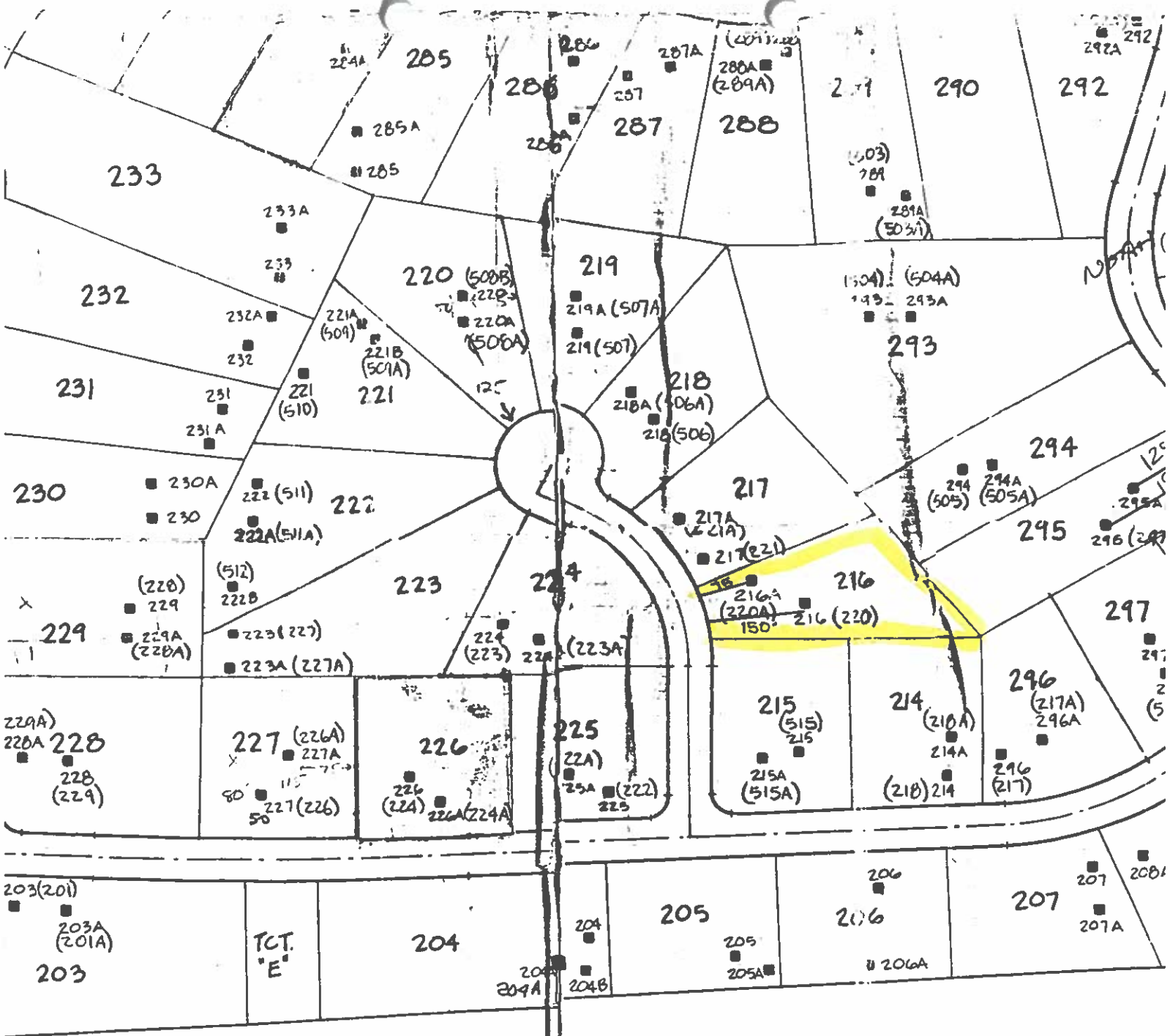
SEE MAP 13 12 21 JD

SEE MAP 13 12 21 JE

SEE MAP 13 12 21

Lot No.	Hole No.	Description
207	207	0-18 silty loam 18 restrictive
	207A	0-16 silty loam 16-18 gravelly silty loam 18 restrictive
208	208	0-14 sandy loam 14-22 well fractured hardpan 22 restrictive
	208A	0-16 sandy loam 16-32 well fractured hardpan 32 restrictive
209	209	0-24 sandy loam 24-30 well fractured hardpan 30 restrictive
	209A	0-15 sandy loam 15-23 well fractured hardpan 23 restrictive material
210	210	0-16 sandy loam 16-24 gravelly silty loam 24 restrictive
	210A	0-12 sandy loam 12-22 rocky silty loam 22 restrictive
211	211	0-23 sandy loam 23 restrictive
	211A	0-18 sandy loam 18-30 well fractured hardpan 30 restrictive
212	212	0-18 sandy loam 18-36 well fractured hardpan 36 restrictive
	212A	0-16 sandy loam 16-30 well fractured hardpan 30 restrictive
213	213	0-7 sandy loam 7-18 silty loam 18 restrictive
	213A	0-15 silty loam 15 restrictive sandstone <i>OK</i> NON-ACCEPTABLE
	213B	0-15 sandy loam 15-22 gravelly silt 22 restrictive layer
214	214 (218)	0-20 sandy loam 20-26 silty loam 26 restrictive layer
	214A (218A)	0-12 sandy loam 12-24 rocky sandy loam 24 restrictive layer
215	215	0-11 sandy loam 11-20 silty loam with fractured sandstone, 20- restrictive
	215A	0-12 sandy loam 12-18 fractured sandstone 18 restrictive
216	(220) 216 (220A) 216A	0-30 rocky sandy loam 0-23 rocky sandy loam

8/4/97
Cap Sample
(OK) SCL



RECORDING CERTIFICATE
 FILED FOR RECORD AT THE REQUEST OF THE COUNTY CLERK
 THIS _____ DAY OF _____, 1976, AT _____ MINUTES PAST _____
 AND RECORDED IN VOLUME _____, BOOK OF MISCELLANEOUS RECORDS OF THE CLERK OF JEFFERSON
 COUNTY, OREGON.

LOOKED
 UP IN VOLUME _____
 PAGES _____
 COUNTY, OREGON.

BLOCK / LOT	LEGAL DESCRIPTION	SPECIFICATIONS	ALREADY HAS SYSTEM (check)				
			PB	EH	NO FILE	CSC	NO CSC
194	13-12-21 BD 200	Std. 225 ft					
195	" 300		✓				✓
196	" 500	Std. 225 ft					✓
197	" 600	Std. 225 ft					
198	" 700	Std. 150 ft					
199	" 800		✓	✓			✓
200	" 900		✓				✓
201	13-12-21 AC 2300		✓				✓
202	" 2400	Std 300 ft					✓
203	" 2500		✓				✓
204	" 2700	CF 300 ft 11" cap					
205	13-12-21 AD 2800	CF 450 ft 16" cap					
206	" 2900		✓	✓			✓
207	" 3000		✓				✓
208	" 3100		✓				✓
209	" 3200	CF 375 ft 16" cap					
210	" 3300	CF 375 ft 12" cap					
211	" 3400	CF 375 ft 16" cap					
212	" 3500		✓				✓
213	" 3600	CF 375' 16" cap PITS #213 + 213 B ON LI					
214	" 2200		✓	✓			✓
215	" 2300		✓				✓
216	" 2400	CF 375' 11" cap	✓	✓			✓
217	" 2500		✓	✓			✓
218	" 2600	CF 300 ft 7" CF					
219	" 2700	Std 340 ft	✓				✓
221	13-12-21 Ae 200		✓				✓
222	" 300		✓				✓
223	" 400		✓				✓
224	" 500	CF 375 ft 11" cap					
225	" 600	CF 400 ft 15" cap					
226	" 700		✓	✓			✓
228	" 800		✓				✓
229	" 1000	CF 300 ft 11" cap					
30	" 1100	CF 375 ft 14" cap (pump)					