

Aerial Map



First American Title

Parcel ID: R337776

Sentry Dynamics, Inc. and its customers make no representations, warranties or conditions, express or implied, as to the accuracy or completeness of information contained in this report.



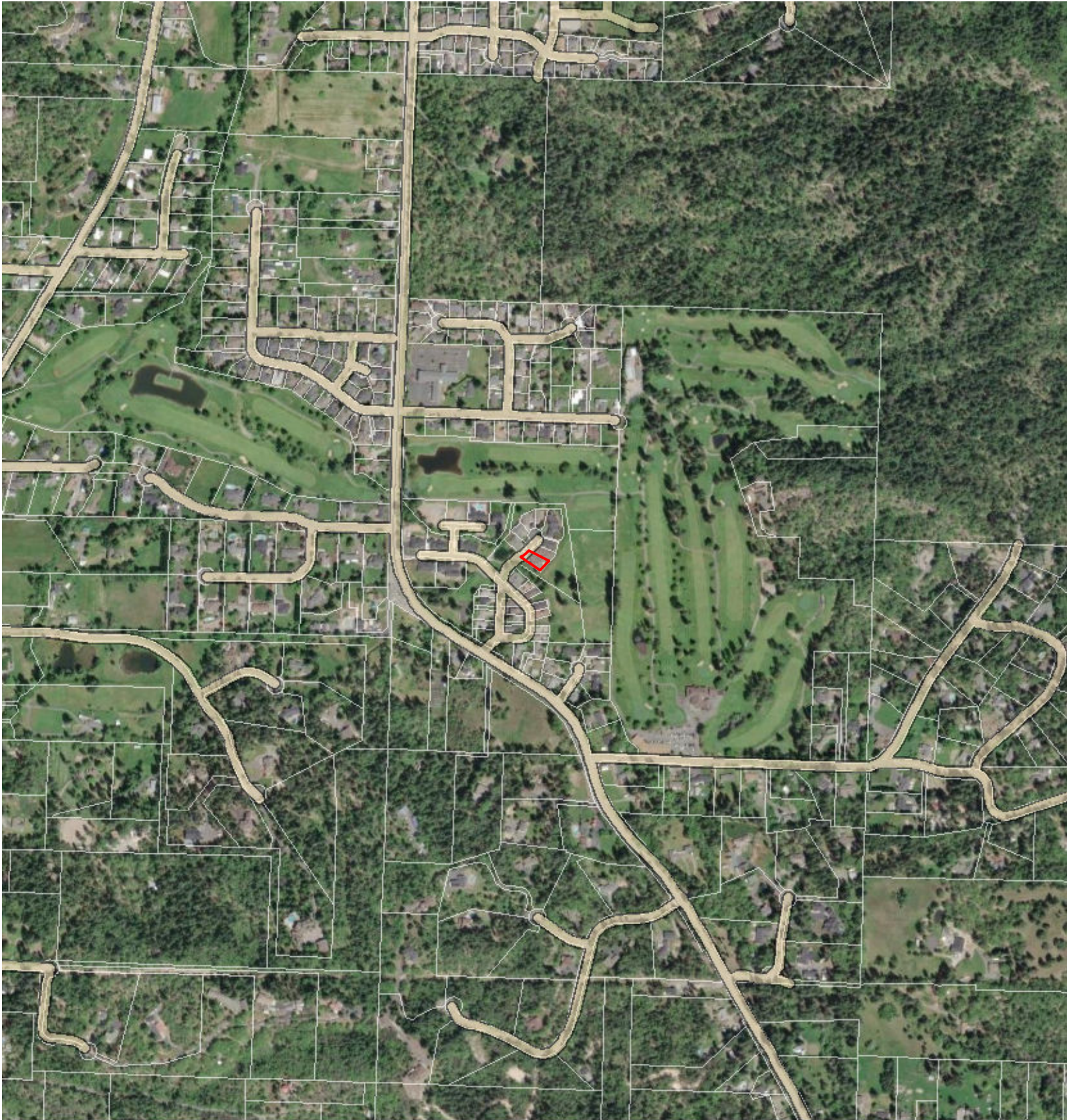
Aerial



Subject



Taxlot



Aerial



Subject



Taxlot

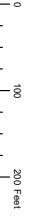


First American Title

Parcel ID: R337776

Site Address: 209 Twisted Pine Dr

Sentry Dynamics, Inc. and its customers make no representations, warranties or conditions, express or implied, as to the accuracy or completeness of information contained in this report.

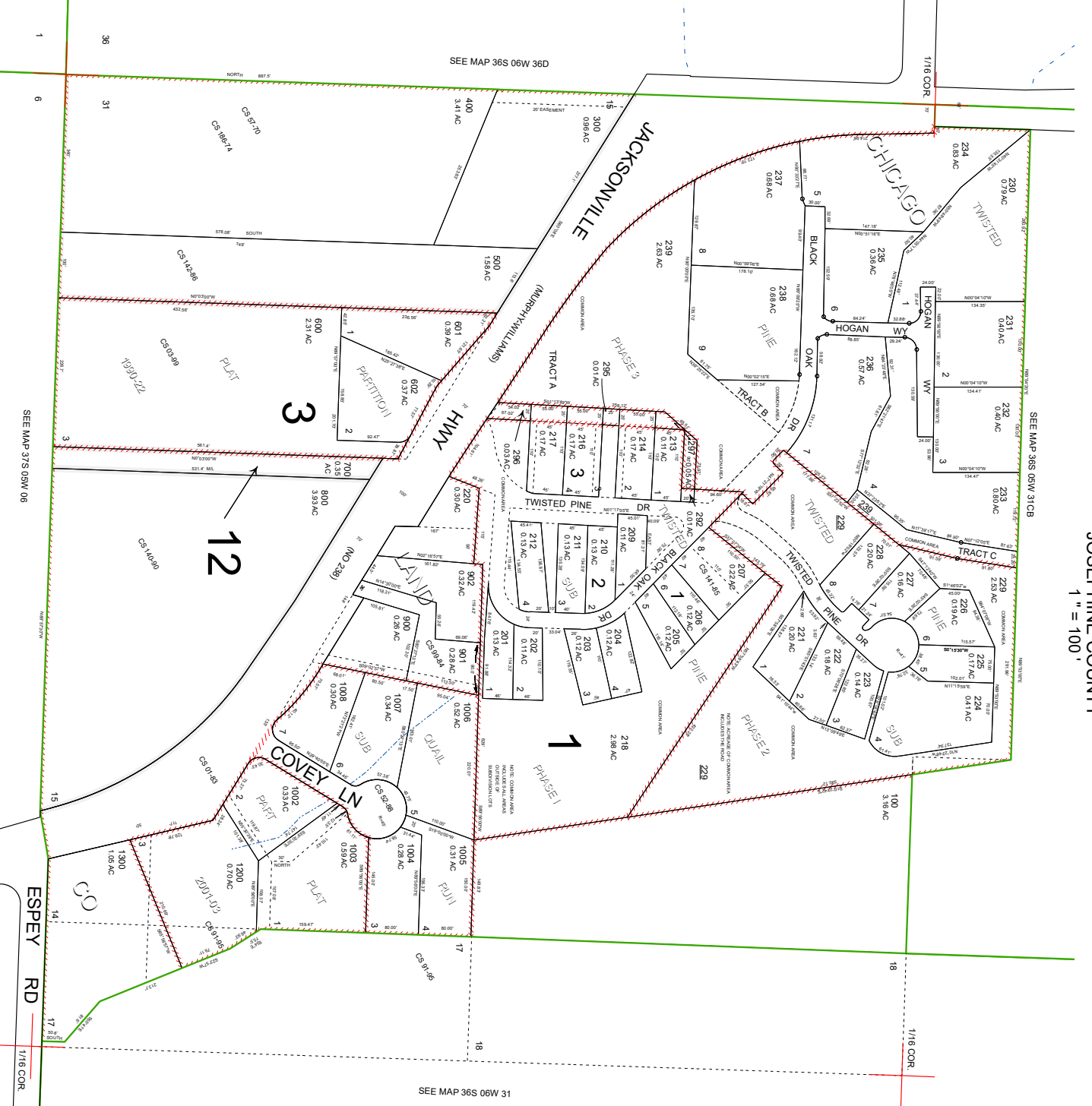


S. W. 1/4 S. W. 1/4 SEC. 31 T. 36S. R. 5W. W.M.
JOSEPHINE COUNTY
1" = 100'

36 05 31CC
GRANTS PASS

CANCELLED:

- 249
- 1001
- 1100
- 290
- 291
- 293
- 294
- 299
- 1000
- 298
- 208
- 1090
- 1290
- 1291
- 219
- 200



36 05 31CC
GRANTS PASS



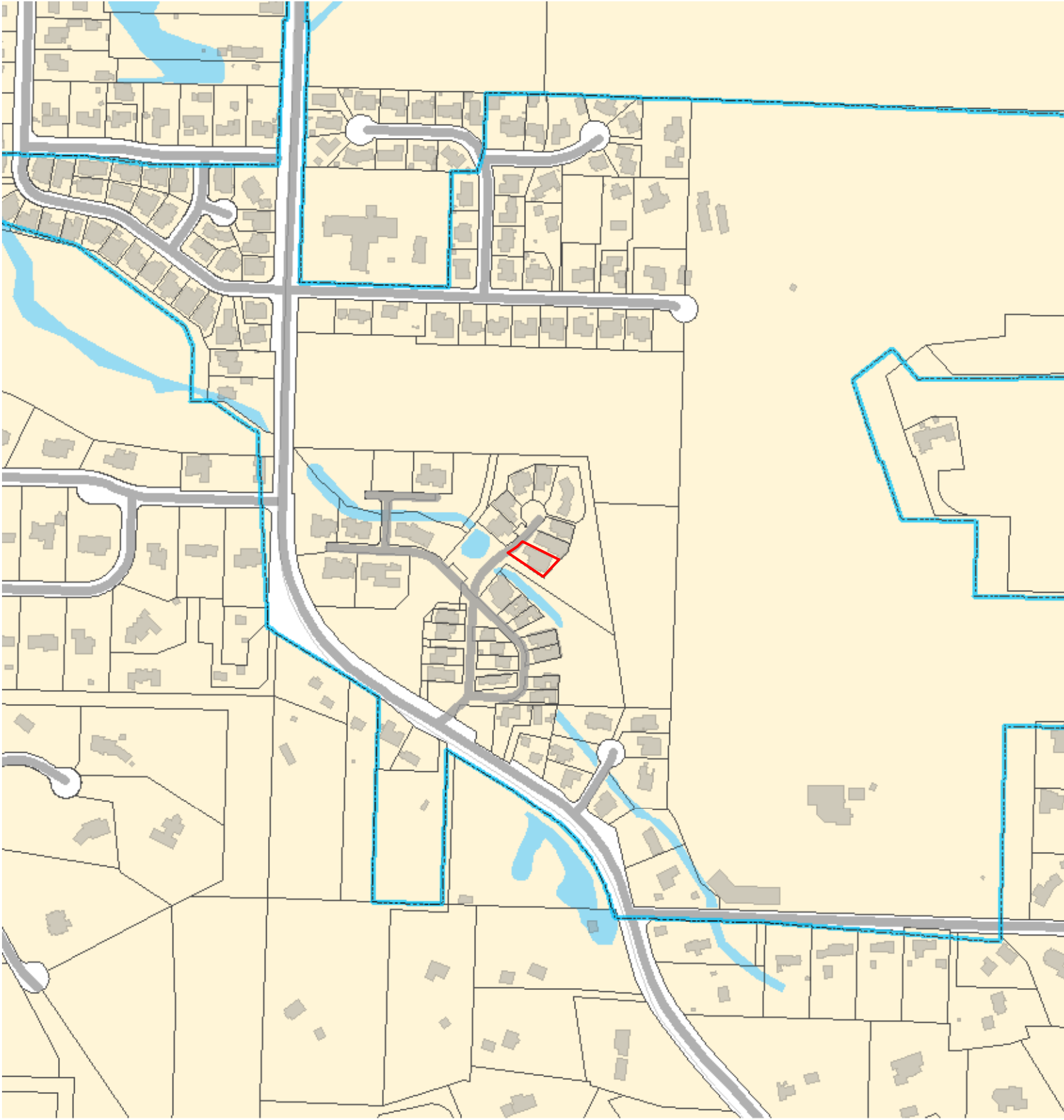
Taxlot












Subject

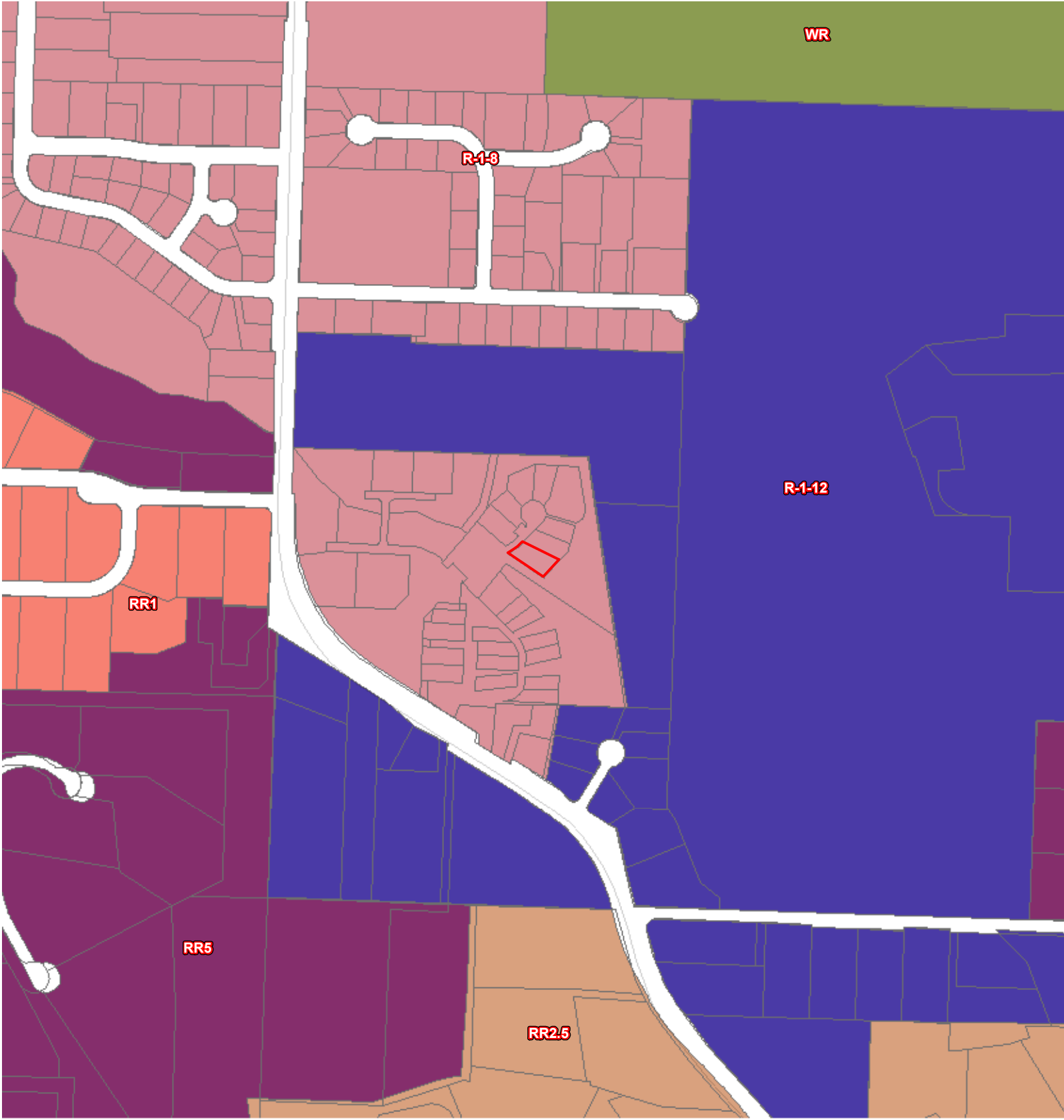


Taxlot



Community

-  High School
-  Middle School
-  Elementary School
-  Water Feature
-  Health Care
-  Fire Station
-  Library
-  City Limits
-  Parks



Zoning



Subject



Taxlot



1120

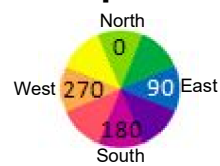


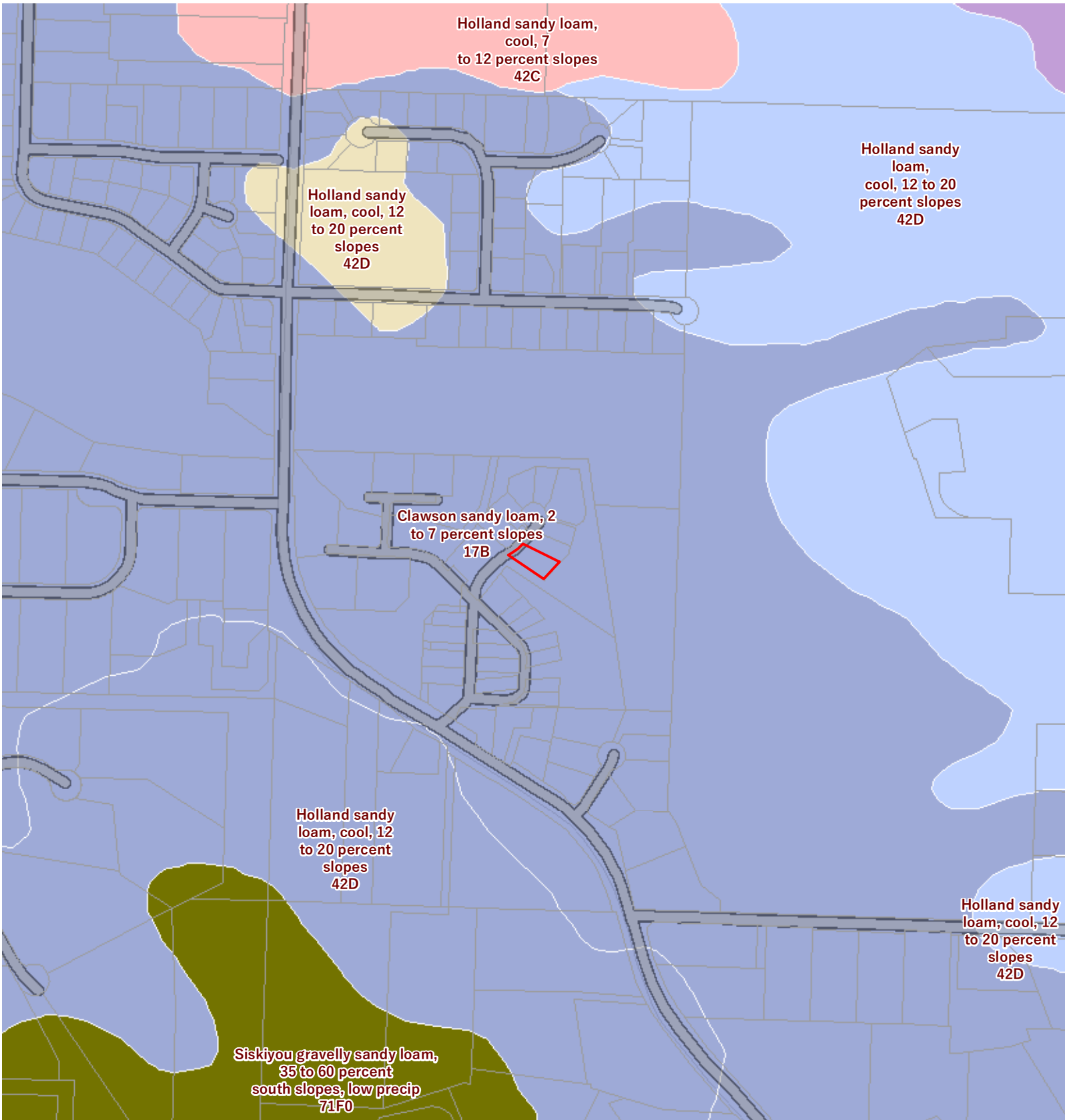
Natural Features

- Contour
 1% Annual Chance Flood
 0.2% Annual Chance Flood
 Special Floodway
- Wetlands
 Area of Undetermined Flood
 Regulatory Floodway
- Area with Reduced Risk Due to Levee
 Future Conditions 1% Annual Chance Flood Hazard



Aspect





Soil



Subject



Taxlot