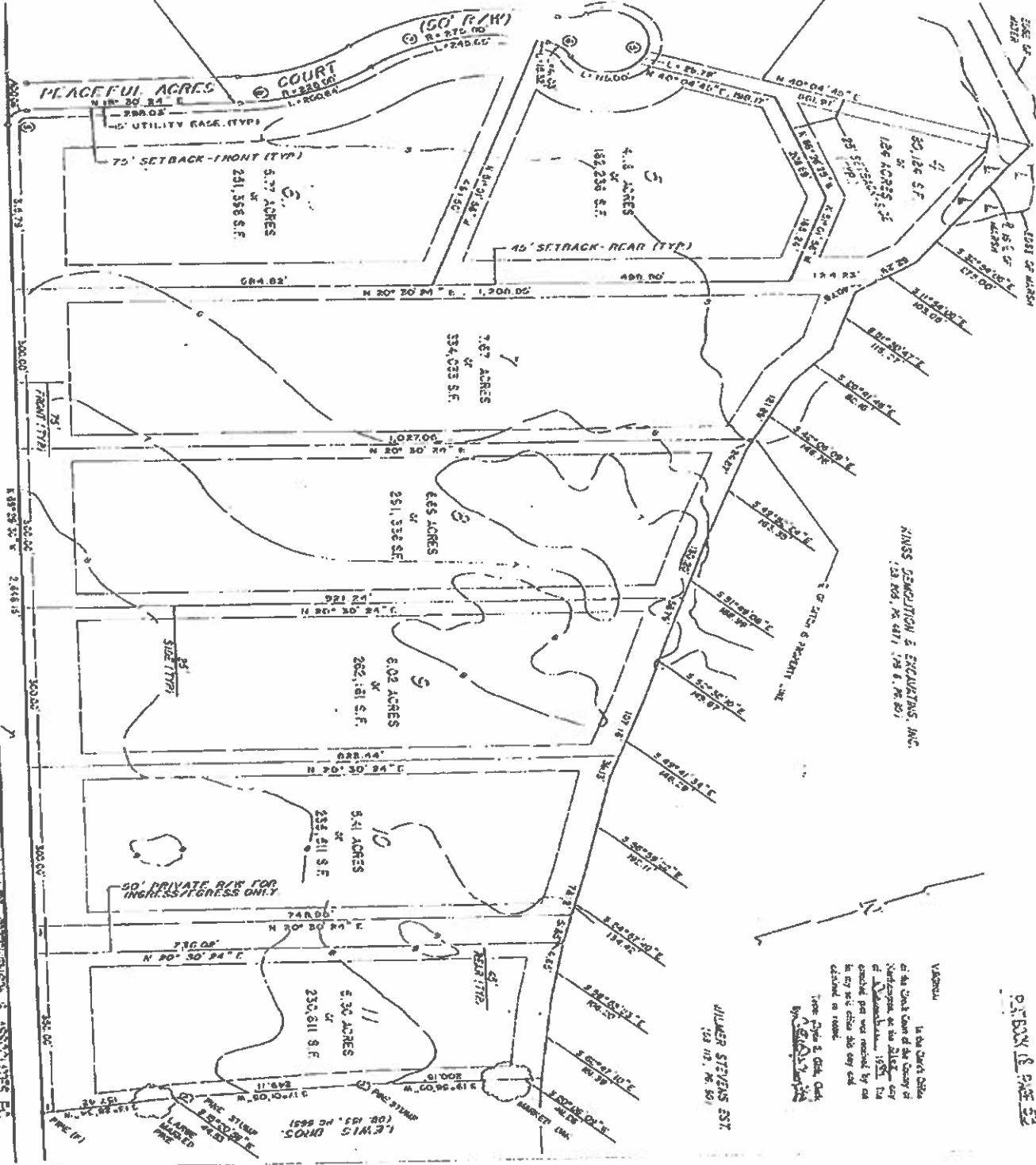


TOTAL AREA THIS SHEET
1,807,659 SQ. FT. = 42.56 AC.
LOTS 6-11 ARE EXEMPT FROM
THE SUBDIVISION ORDINANCE

MATCH LINE SEE SHEET 2 OF 3 SHEETS



KINGS DEMONSTRATION & ENCLOSURES, INC.
123 RD. (R. 417), (S. 6, (R. 50)

JIMMER STEVENS SQ.
(S. 115, (R. 50)

Virginia
In the Court of the County of
Stafford, in the State of
Virginia, on the 15th day
of November, 1955, the
undersigned, not a member of the
Bar, do hereby certify that the copy
attached is a true and
correct copy of the original
as the same appears on the
records of the County of
Stafford, Virginia.

BATTLE POINT ROAD
(40' PRIVATE ROAD)
STATE ROUTE 7051

MILLEN STEPHENSON & ASSOCIATES, P.C.
ENGINEERS SURVEYORS PLANNERS
5433 ROUSE DRIVE VIRGINIA BEACH, VIRGINIA 23462
(804) 450-8864

