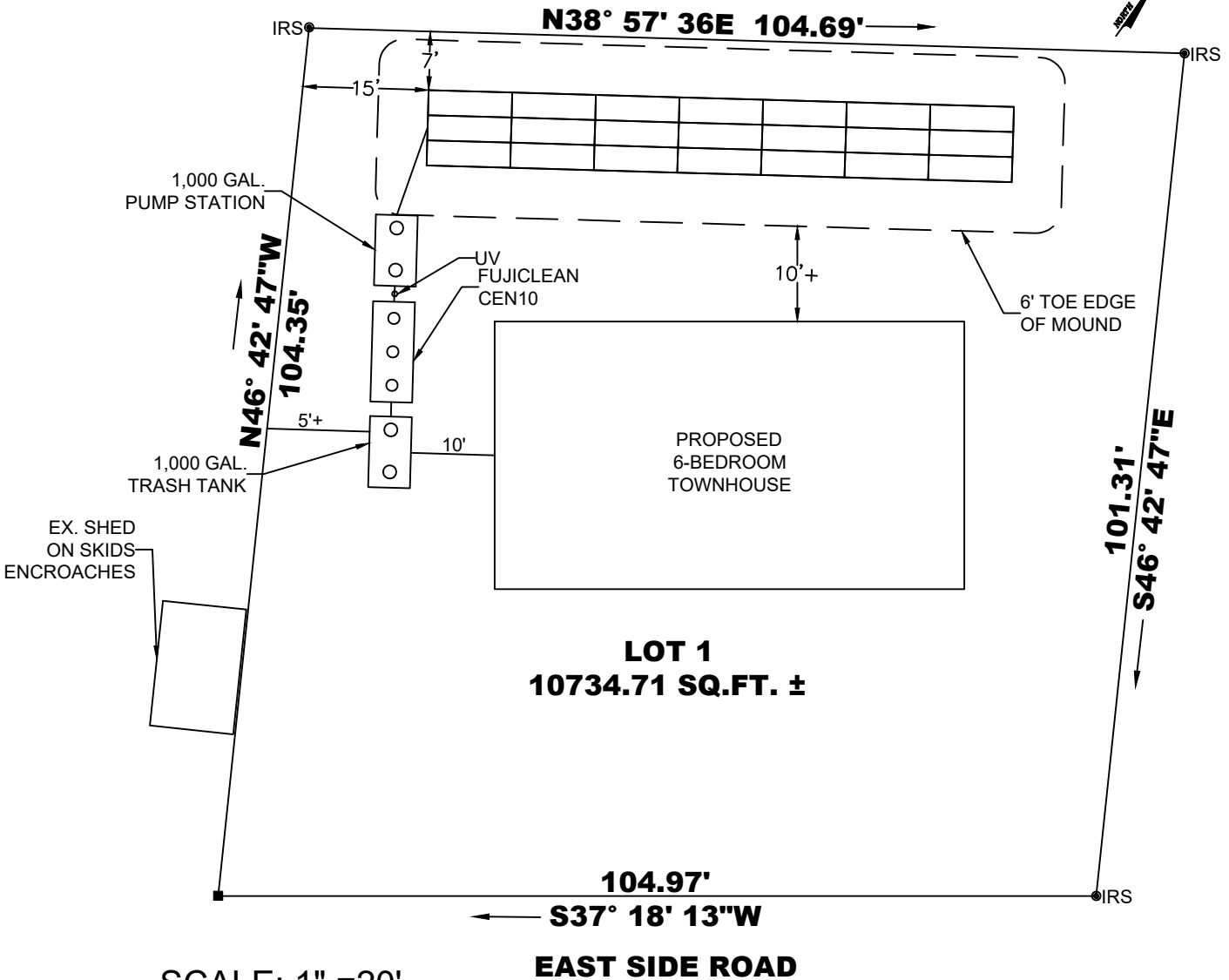


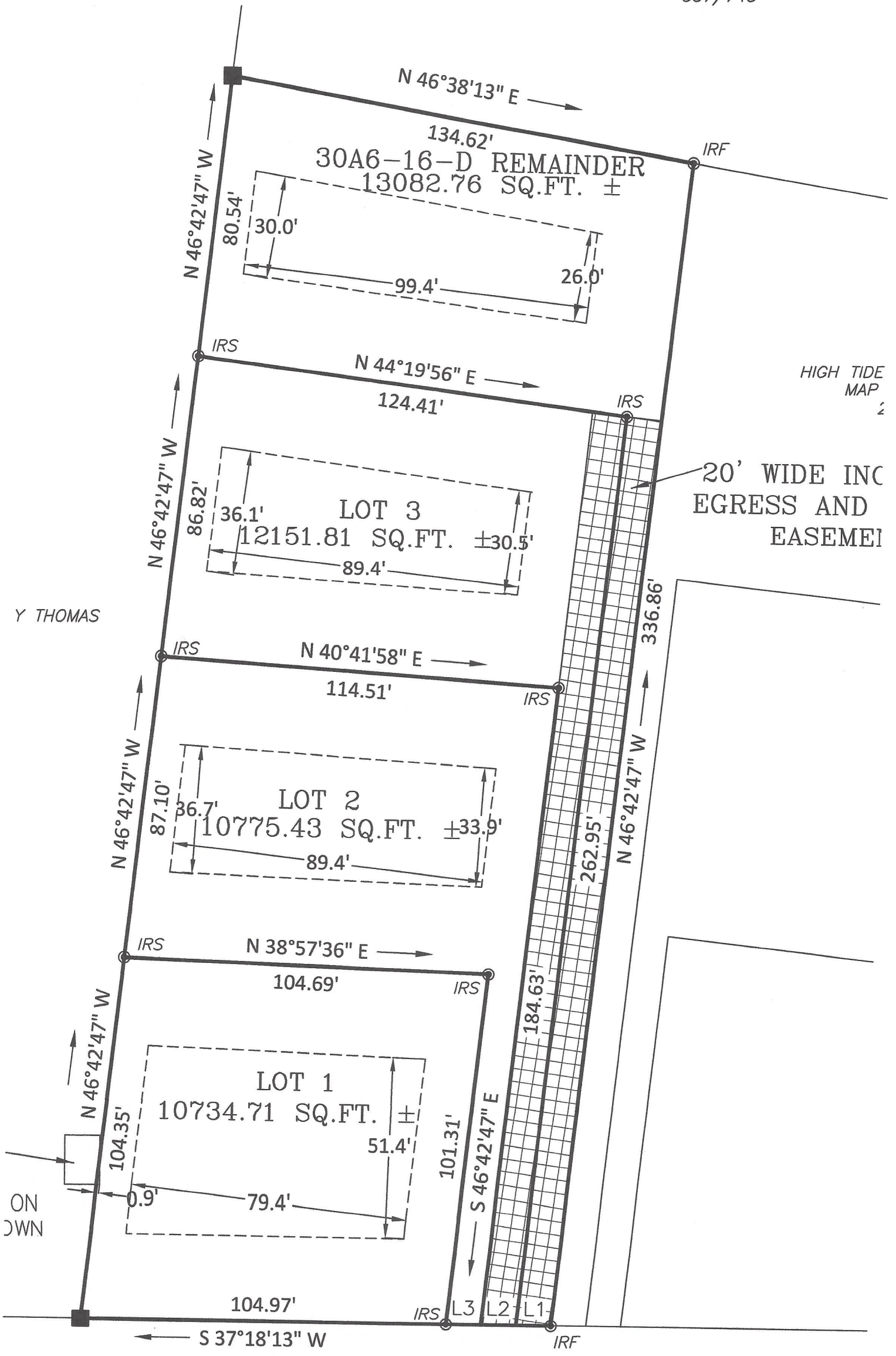
INSTALL:

- 210 LF OF EZFLOW 1203H-GEO AT GRADE ON A 6" LAYER OF ASTM C33 SAND IN 9'X70' DISPOSAL PAD CONFIGURATION (3 ROWS, 70' LONG W/ 1.25" LPP LATERALS)
- 1-1,000 GAL. TOP SEAM TRASH TANK
- 1- FUJICLEAN CEN10 TREATMENT UNIT
- 1-NORWECO AT-1500 UV DISINFECTION UNIT
- 1-1,000 GAL. TOP SEAM PUMP STATION
- 1-ZOELLER N98 EFFLUENT PUMP
- 1-SJE RHOMBUS MODEL TD TIMED DOSE CONTROL PANEL



SOS
Savage Onsite Septic

Drafter: IDV



VIRGINIA STATE RTE #2103