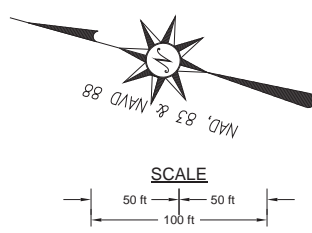
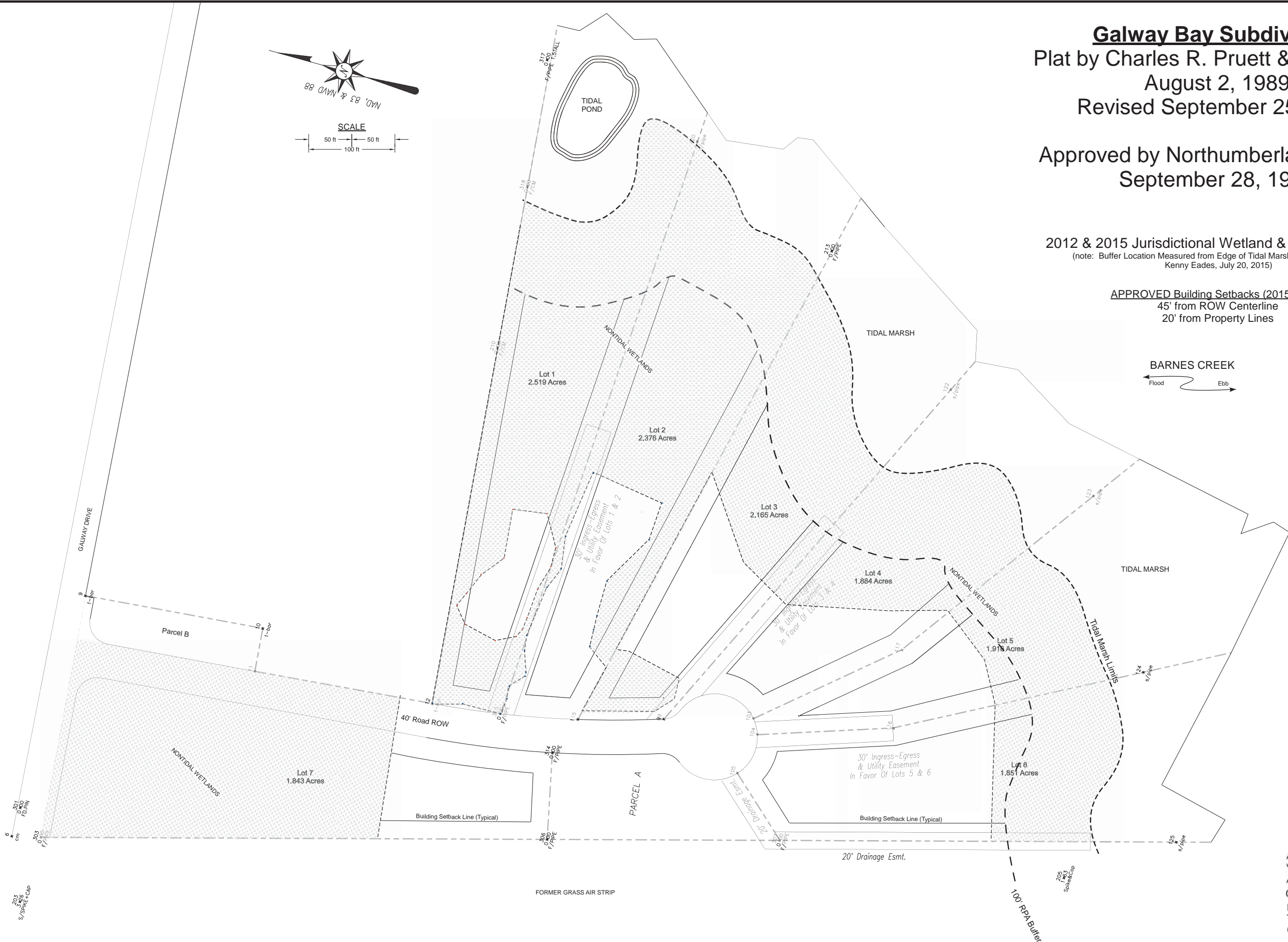


Galway Bay Subdivision
 Plat by Charles R. Pruett & Associates
 August 2, 1989
 Revised September 25, 1989
 Approved by Northumberland County
 September 28, 1989

2012 & 2015 Jurisdictional Wetland & 100' RPA Buffer
(note: Buffer Location Measured from Edge of Tidal Marsh Limits Approved by
 Kenny Eades, July 20, 2015)

APPROVED Building Setbacks (2015-03-03)
 45' from ROW Centerline
 20' from Property Lines



203
 S/S/SP/WE/C/UP

O2S,i
 Obsidian Onsite Services, inc.
 P.O. Box 100
 Tappahannock, VA 22560
 (804) 347-7176