

OLD HARLEM-APPLING HIGHWAY 40'

N 06°58'25" E  
266.94'

30' ACCESS & UTILITY EASEMENT TO SERVE PARCEL 2 & 5

PARCEL 6  
2.61 Ac.

029 051  
N/F JASPER A. COOKE  
& JUDITH NIX COOKE  
PC 2021 Pg. 40

029 052

3/4" CH

N 84°40'51" W  
295.67'

3/4" CH

435.40'

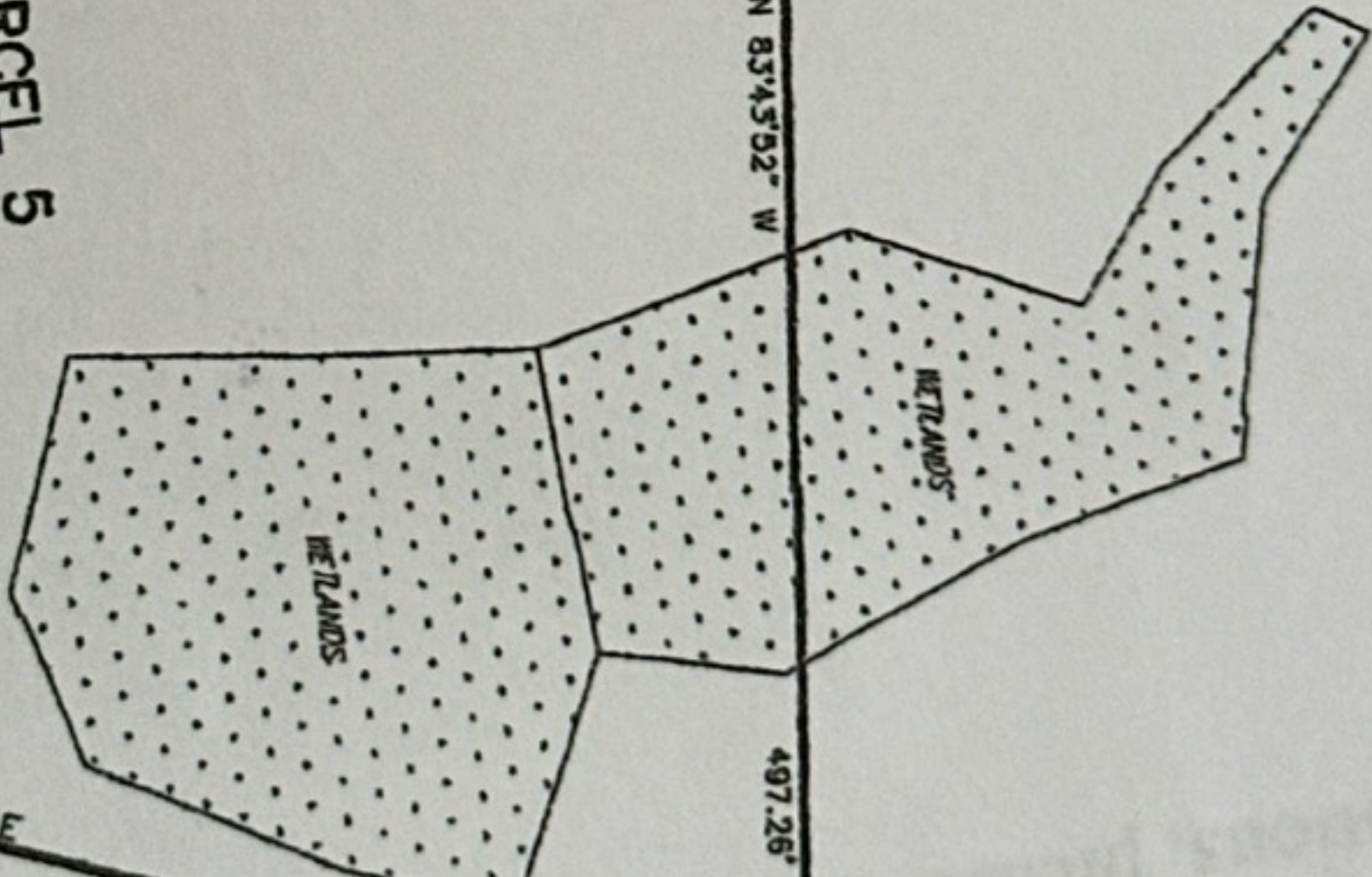
139.81'

N 06°52'32" E  
255.32'

N 06°52'32" E  
299.79'

PARCEL 5  
5.96 Ac.

N 83°45'52" W



N 23°16'30" E

497.26'