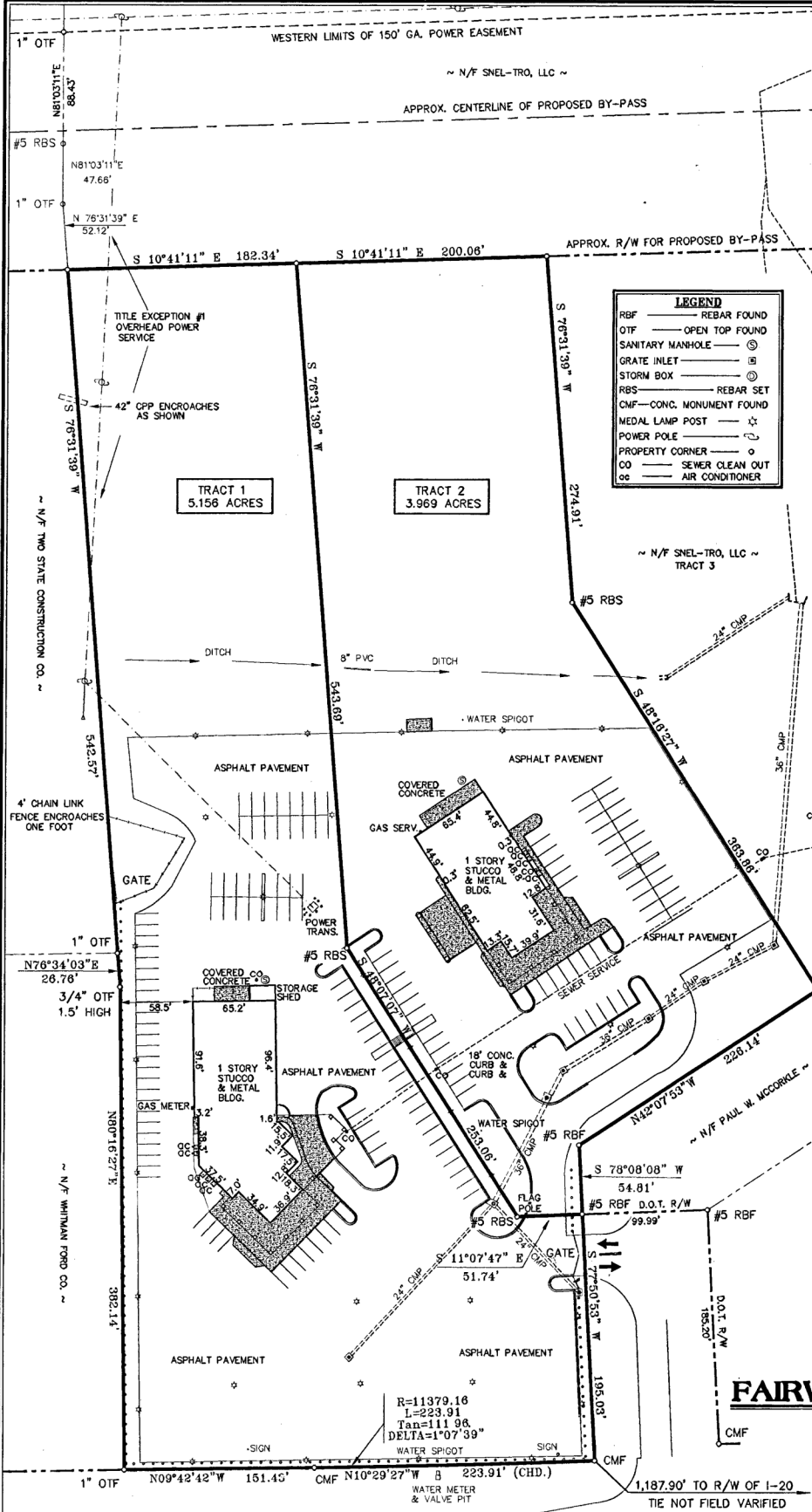
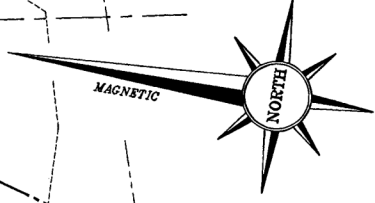




Recorded 06/07/2005 03:00PM

Comie H. Cheatham  
Clerk Superior Court, McDuffie County, Ga.  
Bk 0000T Pg 018C



**LEGEND**

- RBF — REBAR FOUND
- OTF — OPEN TOP FOUND
- SANITARY MANHOLE — (S)
- GRATE INLET — (G)
- STORM BOX — (SB)
- RBS — REBAR SET
- CMF — CONC. MONUMENT FOUND
- MEDAL LAMP POST — (L)
- POWER POLE — (P)
- PROPERTY CORNER — (C)
- CO — SEWER CLEAN OUT
- ac — AIR CONDITIONER

- NOTES:**
- 1) THIS SURVEY WAS PERFORMED WITH A 5-SECOND THEODOLITE, E.D.M. AND 200 FT. STEEL TAPE.
  - 2) THIS PROPERTY DOES NOT LIE WITHIN A FLOOD PRONE AREA.
  - 3) FIELD CLOSURE: 1/43,541. ANGULAR ERROR: 3"/ANGLE.
  - 4) PLAT CLOSURE: 1/431,458. DATE OF SURVEY: NOVEMBER 30, 2001.
  - 5) PLAT REVISED ON 10/8/04, NO ADDITIONAL FIELD WORK DONE AT THIS TIME. ADJUSTED EAST BOUNDARY OF TRACTS I AND II TO "APPROX. R/W FOR PROPOSED BY-PASS".
- REFERENCES:**
- 1) PLAT FOR CLASSIC SOUTH FORD, INC. & CLASSIC SOUTH OLDSMOBILE, PONTIAC, GMC TRUCK, INC. BY MCGILL & ASSOCIATES DATED NOV. 20, 1997.
  - 2) PLAT FOR CLASSIC SOUTH FORD-MERCUURY, INC. JOHN WHITMAN & PAUL WHITMAN BY MCGILL & ASSOCIATES DATED AUGUST 18, 1997.
  - 3) PLAT FOR MELBON GREENE, DONALD GREENE, ROGER GREENE & JIMMY O'NEAL BY MCGILL & ASSOCIATES DATED APRIL 1, 1983.
  - 4) GEORGIA D.O.T. FINAL JUDGMENT RECORDED IN DEED BOOK 212 PG. 603.

**APPROVED**

JUN - 7 2005

McDuffie County  
Planning Commission



**REVISED PLAT**  
FOR  
**FAIRWAY FORD OF THOMSON**  
PROPERTY LOCATED IN THE 134TH G.M.D.  
**MCDUFFIE COUNTY, GEORGIA**  
SCALE: 1" = 60'  
DECEMBER 12, 2001  
REV. 10/8/04

PREPARED BY  
**JAMES G. SWIFT & ASSOCIATES**  
CONSULTING ENGINEERS  
1208 INTERSTATE PARKWAY AUGUSTA, GEORGIA 30909  
(706) 868-8803

U.S. HWY. 78 & STATE ROUTE 17 R/W VARIES