

EXISTING CORPS OF ENGINEERS EASEMENT

Course	Bearing	Distance
L49	N 19°38'00" W	188.87
L50	N 42°33'00" W	567.50
L51	N 23°00'00" W	215.43
L52	N 88°45'00" W	208.50
L53	N 82°25'00" E	123.50
L54	N 82°25'00" E	123.50
L55	N 16°25'00" E	184.20
L56	N 16°25'00" E	184.20
L57	N 65°25'00" W	31.50
L58	N 65°25'00" W	31.50
L59	N 13°30'00" W	141.40
L60	N 13°30'00" W	141.40
L61	S 17°51'31" E	41.70
L62	S 17°51'31" E	41.70
L63	S 60°18'53" E	117.28
L64	S 60°18'53" E	117.28
L65	S 60°18'53" E	117.28
L66	S 60°18'53" E	117.28
L67	S 60°18'53" E	117.28
L68	S 60°18'53" E	117.28
L69	S 60°18'53" E	117.28
L70	S 60°18'53" E	117.28
L71	S 60°18'53" E	117.28
L72	S 60°18'53" E	117.28
L73	S 60°18'53" E	117.28
L74	S 60°18'53" E	117.28
L75	S 60°18'53" E	117.28
L76	S 60°18'53" E	117.28
L77	S 60°18'53" E	117.28
L78	S 60°18'53" E	117.28
L79	S 60°18'53" E	117.28
L80	S 60°18'53" E	117.28
L81	S 60°18'53" E	117.28
L82	S 60°18'53" E	117.28
L83	S 60°18'53" E	117.28
L84	S 60°18'53" E	117.28
L85	S 60°18'53" E	117.28
L86	S 60°18'53" E	117.28
L87	S 60°18'53" E	117.28
L88	S 60°18'53" E	117.28
L89	S 60°18'53" E	117.28
L90	S 60°18'53" E	117.28
L91	S 60°18'53" E	117.28
L92	S 60°18'53" E	117.28
L93	S 60°18'53" E	117.28
L94	S 60°18'53" E	117.28
L95	S 60°18'53" E	117.28
L96	S 60°18'53" E	117.28
L97	S 60°18'53" E	117.28
L98	S 60°18'53" E	117.28
L99	S 60°18'53" E	117.28
L100	S 60°18'53" E	117.28

Course	Bearing	Distance	Chord	Chord Bcrr.
C17	N 17°00'00" E	48.78	47.42	N 30°15'00" E
C18	N 17°00'00" E	48.78	47.42	N 30°15'00" E
C19	N 17°00'00" E	48.78	47.42	N 30°15'00" E
C20	N 17°00'00" E	48.78	47.42	N 30°15'00" E
C21	N 17°00'00" E	48.78	47.42	N 30°15'00" E
C22	N 17°00'00" E	48.78	47.42	N 30°15'00" E
C23	N 17°00'00" E	48.78	47.42	N 30°15'00" E
C24	N 17°00'00" E	48.78	47.42	N 30°15'00" E
C25	N 17°00'00" E	48.78	47.42	N 30°15'00" E
C26	N 17°00'00" E	48.78	47.42	N 30°15'00" E
C27	N 17°00'00" E	48.78	47.42	N 30°15'00" E
C28	N 17°00'00" E	48.78	47.42	N 30°15'00" E
C29	N 17°00'00" E	48.78	47.42	N 30°15'00" E
C30	N 17°00'00" E	48.78	47.42	N 30°15'00" E
C31	N 17°00'00" E	48.78	47.42	N 30°15'00" E
C32	N 17°00'00" E	48.78	47.42	N 30°15'00" E
C33	N 17°00'00" E	48.78	47.42	N 30°15'00" E
C34	N 17°00'00" E	48.78	47.42	N 30°15'00" E
C35	N 17°00'00" E	48.78	47.42	N 30°15'00" E
C36	N 17°00'00" E	48.78	47.42	N 30°15'00" E
C37	N 17°00'00" E	48.78	47.42	N 30°15'00" E
C38	N 17°00'00" E	48.78	47.42	N 30°15'00" E
C39	N 17°00'00" E	48.78	47.42	N 30°15'00" E
C40	N 17°00'00" E	48.78	47.42	N 30°15'00" E
C41	N 17°00'00" E	48.78	47.42	N 30°15'00" E
C42	N 17°00'00" E	48.78	47.42	N 30°15'00" E
C43	N 17°00'00" E	48.78	47.42	N 30°15'00" E
C44	N 17°00'00" E	48.78	47.42	N 30°15'00" E
C45	N 17°00'00" E	48.78	47.42	N 30°15'00" E
C46	N 17°00'00" E	48.78	47.42	N 30°15'00" E
C47	N 17°00'00" E	48.78	47.42	N 30°15'00" E
C48	N 17°00'00" E	48.78	47.42	N 30°15'00" E
C49	N 17°00'00" E	48.78	47.42	N 30°15'00" E
C50	N 17°00'00" E	48.78	47.42	N 30°15'00" E

THIS PLAT IS SUBJECT TO ALL EASEMENTS, RIGHTS-OF-WAY AND PROTECTIVE COVENANTS OF RECORD.

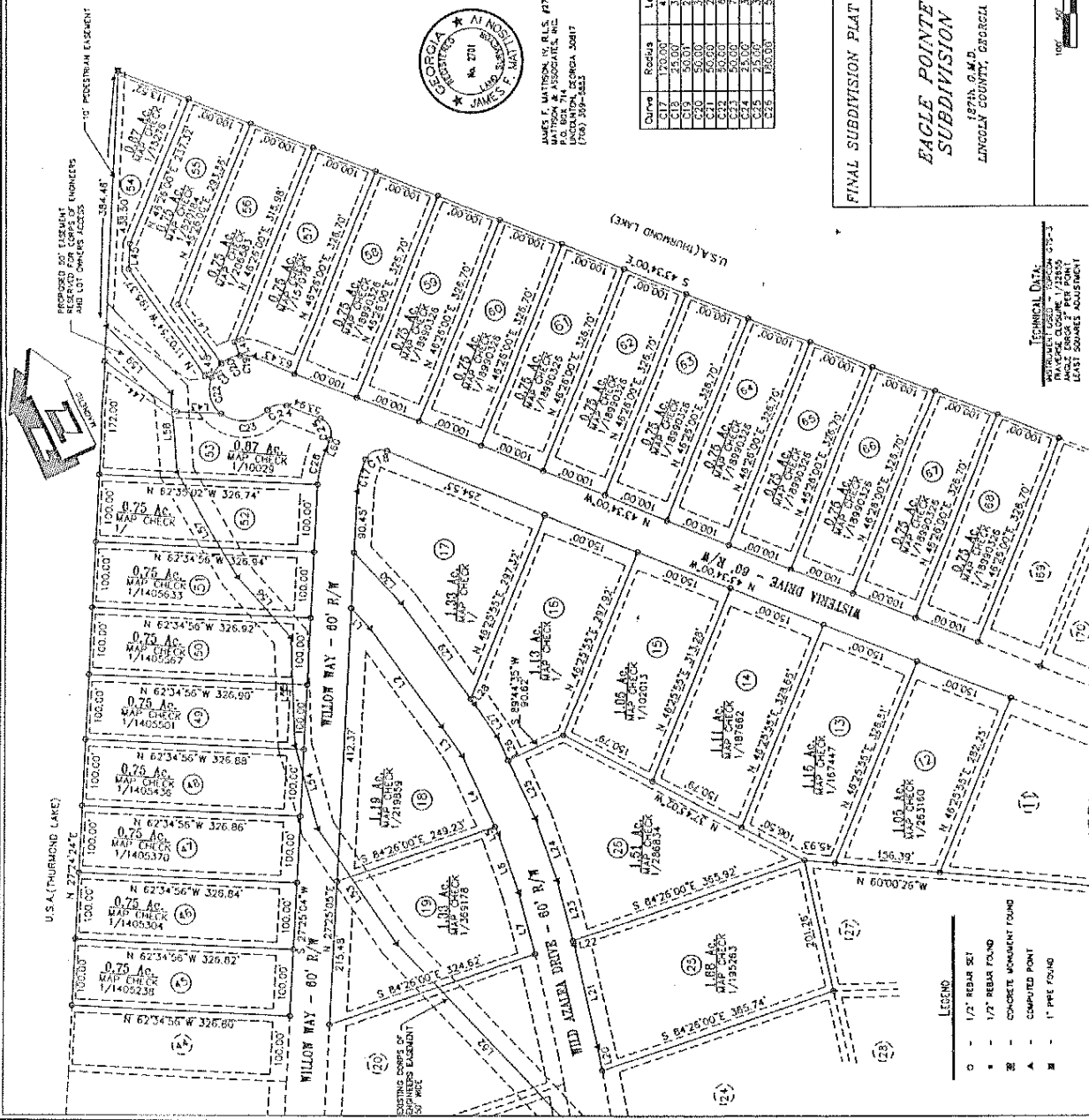
FINAL SUBDIVISION PLAT FOR
**EAGLE POINTE
 SUBDIVISION**
 MATTISON & ASSOCIATES
 LAND SURVEYORS
 P.O. BOX 714
 LINCOLN, GEORGIA 30817
 PHONE (706) 859-6868
 FAX (706) 859-6864
 R.L.S. 14701

DATE: JUNE 4, 2005
 SCALE: 1" = 100'
 DRAWN BY: JFM
 JOB NO.: 5198L
 FILE NAME: 5198L.PLAT.DWG
 SHEET NO.: 3 of 5

TECHNICAL DATA:
 PROJECT USED: 1/2" SECTION CTS-3
 ANGLE ERROR: 2" PER POINT
 LEAST SQUARES ADJUSTMENT



JAMES F. MATTISON, IV, R.L.S. 14701
 MATTISON & ASSOCIATES, INC.
 LINCOLN, GEORGIA 30817
 (706) 859-6868



- LEGEND
- 1/2" REBAR SET
 - 1/2" REBAR FOUND
 - CONCRETE MONUMENT FOUND
 - ▲ COMPUTED POINT
 - 1" PIP FOUND

