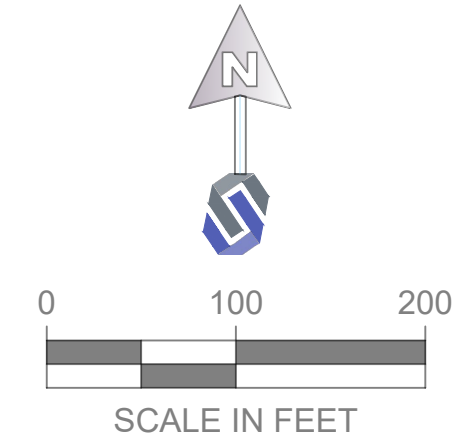
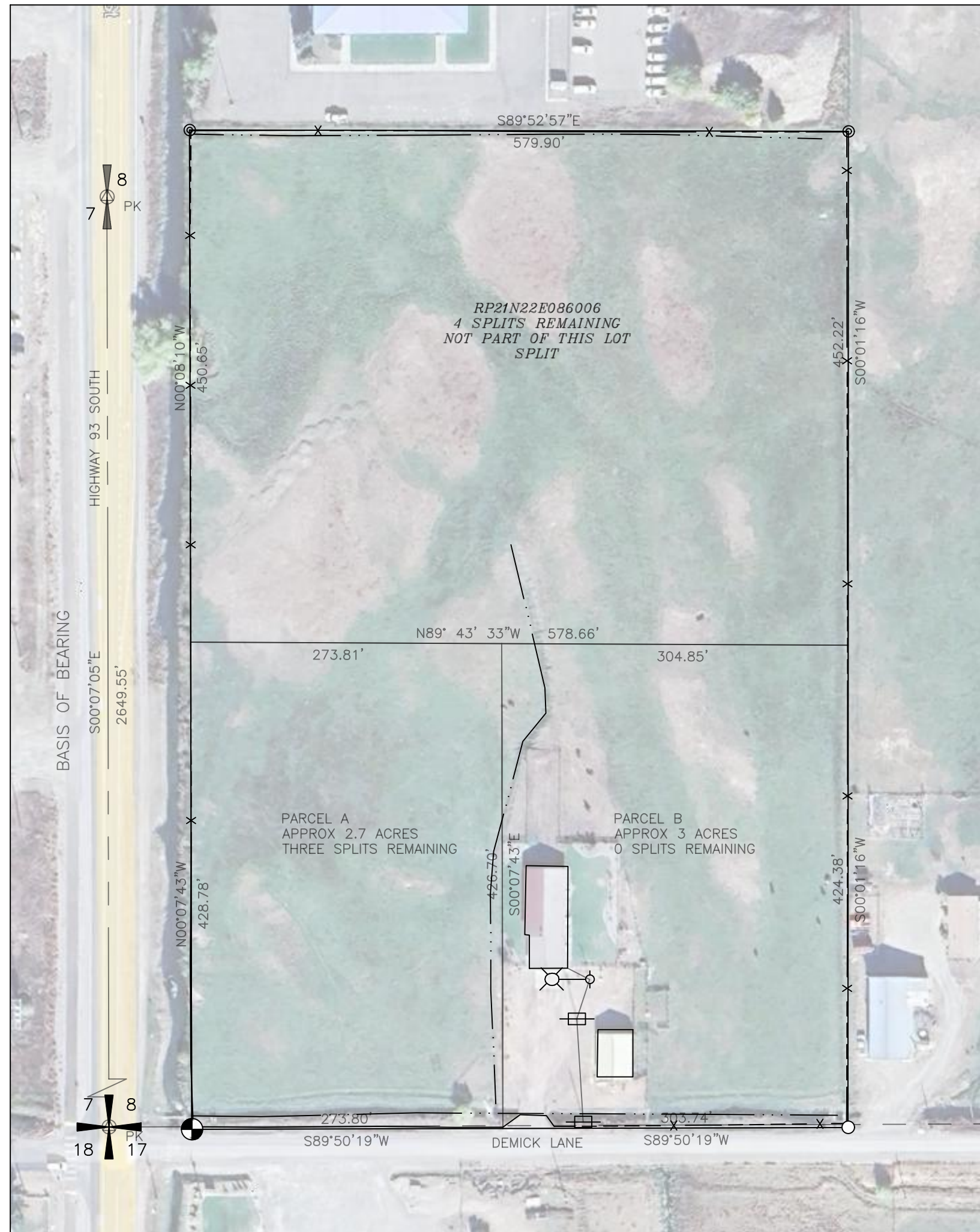


LOT SPLIT PLAT  
 LOCATED IN THE W1/2SW1/4SW1/4 SEC. 8  
 T. 21 N., R. 22 E., BOISE MERIDIAN, LEMHI COUNTY, IDAHO



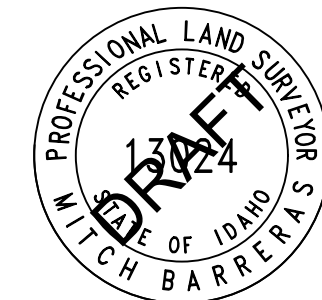
LEGEND

- BOUNDARY THIS SURVEY
- SECTION LINE
- ADJOINING DEED LINE
- FOUND 1/2' REBAR
- POWER POLE
- LIGHT POLE
- FOUND 5/8" REBAR
- BRASS CAP
- NAIL (PK)
- SECTION CORNER MONUMENTATION
- QUARTER CORNER MONUMENTATION



CERTIFICATE OF SURVEYOR

I DO HEREBY CERTIFY THAT I AM A PROFESSIONAL LAND SURVEYOR, LICENSED BY THE STATE OF IDAHO, AND THAT THIS MAP HAS BEEN PREPARED FROM AN ACTUAL SURVEY MADE ON THE GROUND UNDER MY DIRECT SUPERVISION, AND THAT THIS MAP IS AN ACCURATE REPRESENTATION OF SAID SURVEY, AND IS IN CONFORMITY WITH THE CORNER PERPETUATION AND FILING ACT, STATE OF IDAHO CODE 55-1601 THROUGH 55-1613 AND TO THE IDAHO CODE RELATING TO SURVEYS.



LOT SPLIT PLAT FOR  
**LUKENS**  
 LOCATED IN W1/2 SW1/4 SW1/4 SECTION 8  
 TOWNSHIP 21 NORTH, RANGE 22 EAST  
 BOISE MERIDIAN, LEMHI COUNTY, IDAHO

FILE : LUKENS LOT SPLIT  
 CSI PROJ. # : 25045.02  
 DRAWN BY: JH  
 DESIGN BY: KH  
 CHECKED BY: MB  
 ONE INCH  
 AT FULL SIZE, IF NOT ONE  
 INCH, SCALE ACCORDINGLY  
 LAST UPDATED: 2/25/2025

SHEET NUMBER:  
**2 OF 2**

Plot Date: 2/27/2025 9:39 AM Plotted By: Kristin Hayden Date Created: 2/25/2025 L:\ID\PROJECTS\ACTIVE\2025\F2045.02 - LUKENS LOT SPLIT.DWG SURVEY DRAWINGS\LUKENS LOT SPLIT.DWG