

4870

MAPLE GROVE ESTATES

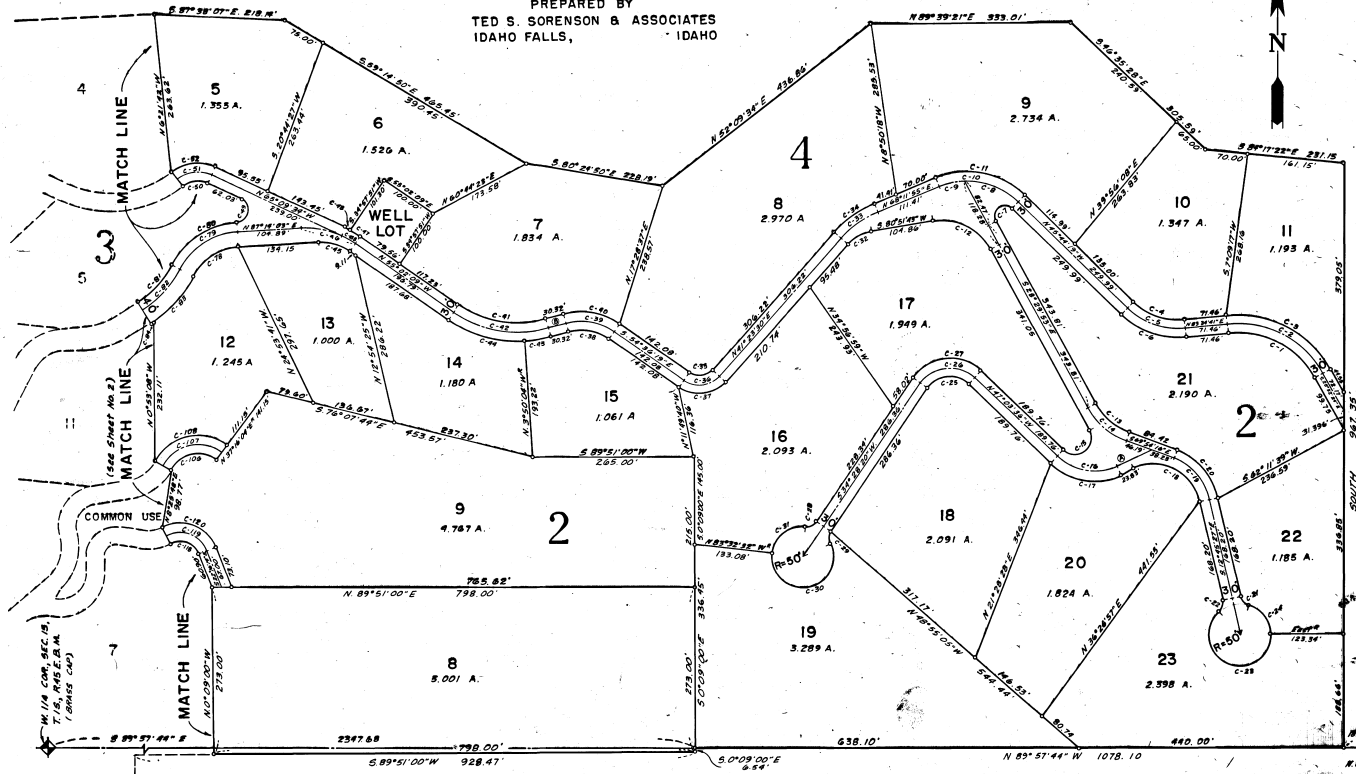
DIVISION NO. 2 BONNEVILLE COUNTY, IDAHO PART OF SEC. 15, T. 15, R. 45 E.B.M.

SHEET 1 OF 3
SCALE: 1" = 100'

NOTES AND LEGEND:

- designates iron rods.
- An electric utility easement 10 feet wide is reserved along all lot lines within each lot.
- A 10' wide utility easement and a 30' slope easement is reserved along the street front of all lots.
- All street and easement dedications reserve the rights to the water Co. to construct, maintain, and service their utilities. Building set back lines are 30' from adjacent streets.
- C-125 indicates reference number for the curve data table. (See Sheet 3 of 3)
- indicates reference letter for the tangent data table. (See Sheet 3 of 3)
- Private Roadways, (All roadways in this subdivision) will not be maintained by Bonneville County.

PREPARED BY
TED S. SORENSON & ASSOCIATES
IDAHO FALLS, IDAHO



Maple Grove Estates Div. 2
T. 15, R. 45 E.B.M.
433633 N35 2427

Maple Grove Estates Div. 2
T. 15, R. 45 E.B.M.
433633 N35 2427