

Fd. Railroad Spike
Inst. No. 283833



DRIFTWOOD ESTATES

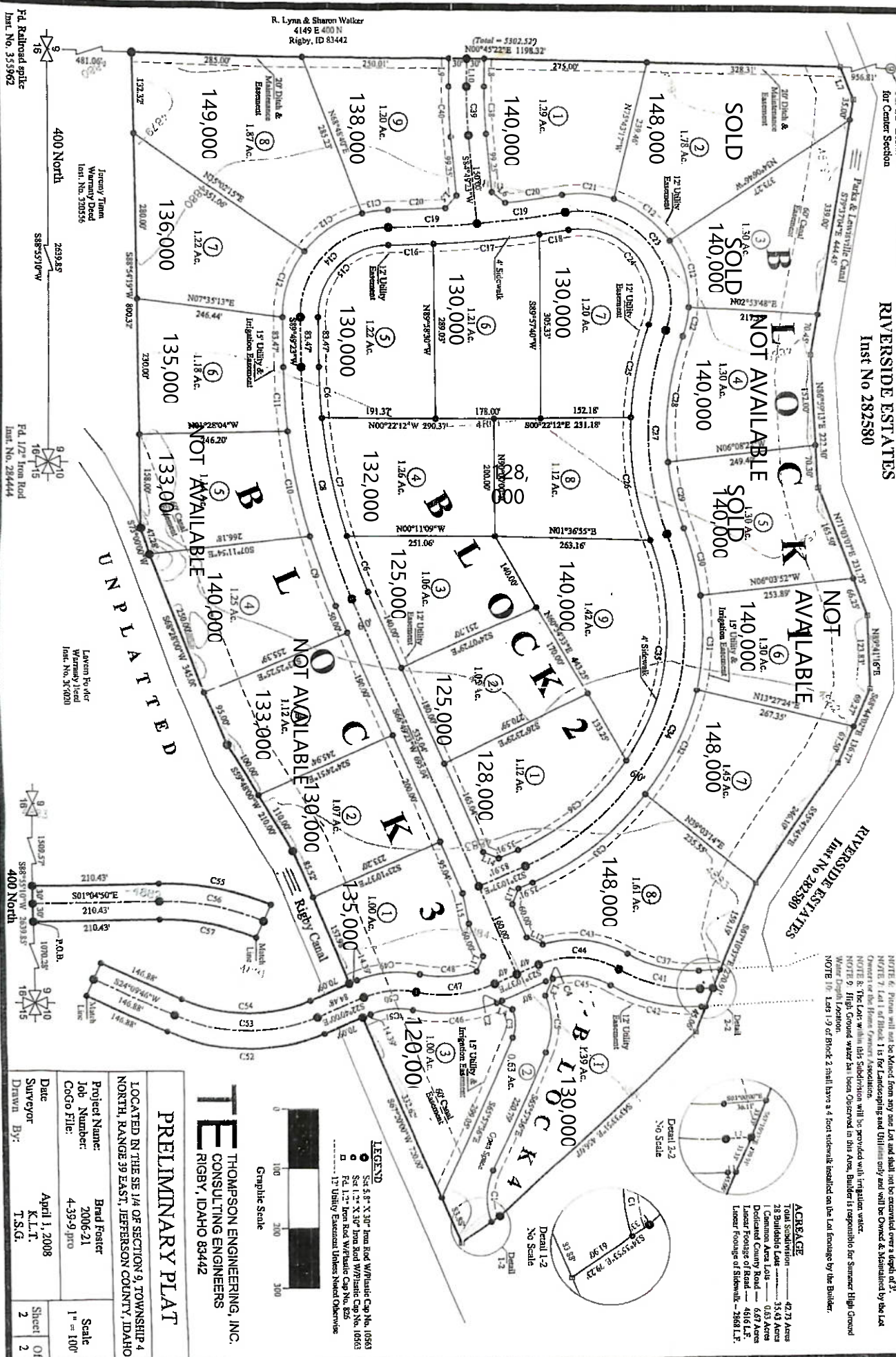
DIVISION NO. 1
JEFFERSON COUNTY, IDAHO
LOCATED IN THE SE 1/4 OF SECTION 9, T4N R39E, B.M.

RIVERSIDE ESTATES
Inst. No. 282580

NOTES:
NOTE 1: This subdivision falls outside the 500 year Flood Plain as per FRM Map No. 14051 CD07 B.
NOTE 2: This property as Zoned R1 and has included use of this subdivision is for Residential Single Family Dwelling Unit.
NOTE 3: All lots will be served by Enhanced Sewer System.
NOTE 4: All lots will be served by Water Mains.
NOTE 5: All lots will be served by Gas Mains.
NOTE 6: All lots will be served by Telephone Mains.
NOTE 7: All lots will be served by Electric Mains.
NOTE 8: The Lots within this Subdivision will be provided with Irrigation Water.
NOTE 9: Flood Ground water has been Observed in this Area. Builder is responsible for Summer High Ground Water Depth Location.
NOTE 10: Lots 1-9 of Block 2 shall have a 4 foot sidewalk installed on the Lot frontage by the Builder.

ACREAGE

Lot 1	42.73 Acres
Lot 2	3.63 Acres
Lot 3	3.63 Acres
Lot 4	3.63 Acres
Lot 5	3.63 Acres
Lot 6	3.63 Acres
Lot 7	3.63 Acres
Lot 8	3.63 Acres
Lot 9	3.63 Acres
Lot 10	3.63 Acres
Lot 11	3.63 Acres
Lot 12	3.63 Acres
Lot 13	3.63 Acres
Lot 14	3.63 Acres
Lot 15	3.63 Acres
Lot 16	3.63 Acres
Lot 17	3.63 Acres
Lot 18	3.63 Acres
Lot 19	3.63 Acres
Lot 20	3.63 Acres
Lot 21	3.63 Acres
Lot 22	3.63 Acres
Lot 23	3.63 Acres
Lot 24	3.63 Acres
Lot 25	3.63 Acres
Lot 26	3.63 Acres
Lot 27	3.63 Acres
Lot 28	3.63 Acres
Lot 29	3.63 Acres
Lot 30	3.63 Acres
Lot 31	3.63 Acres
Lot 32	3.63 Acres
Lot 33	3.63 Acres
Lot 34	3.63 Acres
Lot 35	3.63 Acres
Lot 36	3.63 Acres
Lot 37	3.63 Acres
Lot 38	3.63 Acres
Lot 39	3.63 Acres
Lot 40	3.63 Acres
Lot 41	3.63 Acres
Lot 42	3.63 Acres
Lot 43	3.63 Acres
Lot 44	3.63 Acres
Lot 45	3.63 Acres
Lot 46	3.63 Acres
Lot 47	3.63 Acres
Lot 48	3.63 Acres
Lot 49	3.63 Acres
Lot 50	3.63 Acres
Lot 51	3.63 Acres
Lot 52	3.63 Acres
Lot 53	3.63 Acres
Lot 54	3.63 Acres
Lot 55	3.63 Acres
Lot 56	3.63 Acres
Lot 57	3.63 Acres
Lot 58	3.63 Acres
Lot 59	3.63 Acres
Lot 60	3.63 Acres
Lot 61	3.63 Acres
Lot 62	3.63 Acres
Lot 63	3.63 Acres
Lot 64	3.63 Acres
Lot 65	3.63 Acres
Lot 66	3.63 Acres
Lot 67	3.63 Acres
Lot 68	3.63 Acres
Lot 69	3.63 Acres
Lot 70	3.63 Acres
Lot 71	3.63 Acres
Lot 72	3.63 Acres
Lot 73	3.63 Acres
Lot 74	3.63 Acres
Lot 75	3.63 Acres
Lot 76	3.63 Acres
Lot 77	3.63 Acres
Lot 78	3.63 Acres
Lot 79	3.63 Acres
Lot 80	3.63 Acres
Lot 81	3.63 Acres
Lot 82	3.63 Acres
Lot 83	3.63 Acres
Lot 84	3.63 Acres
Lot 85	3.63 Acres
Lot 86	3.63 Acres
Lot 87	3.63 Acres
Lot 88	3.63 Acres
Lot 89	3.63 Acres
Lot 90	3.63 Acres
Lot 91	3.63 Acres
Lot 92	3.63 Acres
Lot 93	3.63 Acres
Lot 94	3.63 Acres
Lot 95	3.63 Acres
Lot 96	3.63 Acres
Lot 97	3.63 Acres
Lot 98	3.63 Acres
Lot 99	3.63 Acres
Lot 100	3.63 Acres



TE THOMPSON ENGINEERING, INC.
CONSULTING ENGINEERS
RIGBY, IDAHO 83442

PRELIMINARY PLAT

LOCATED IN THE SE 1/4 OF SECTION 9, TOWNSHIP 4 NORTH, RANGE 39 EAST, JEFFERSON COUNTY, IDAHO

Project Name:	Brad Foster
Job Number:	2006-21
CoGo File:	4-33-9 pro
Date:	April 1, 2008
Surveyor:	K.L.T.
Drawn By:	T.S.G.
Scale:	1" = 100'
Sheet:	2
OF:	2



LEGEND
 ● 5/8" x 3/4" Iron Rod W/Plastic Cap No. 10553
 ○ 1/2" x 1/2" Iron Rod W/Plastic Cap No. 10553
 □ 1/2" Iron Rod W/Plastic Cap No. 655
 --- 12" Utility Easement Unless Noted Otherwise

Fd. Railroad Spike
Inst. No. 35962

R. Lynn & Sharon Walker
4149 E 400 N
Rigby, ID 83442

Fd. 172' Iron Rod
Inst. No. 284444

Laven Pole
Warning Head
Inst. No. 317020

Fd. 172' Iron Rod
Inst. No. 283833

Fd. 172' Iron Rod
Inst. No. 283833

Fd. 172' Iron Rod
Inst. No. 283833

Fd. 172' Iron Rod
Inst. No. 283833

Fd. 172' Iron Rod
Inst. No. 283833

Fd. 172' Iron Rod
Inst. No. 283833

Fd. 172' Iron Rod
Inst. No. 283833