

RECORD OF SURVEY - BOUNDARY LINE ADJUSTMENT

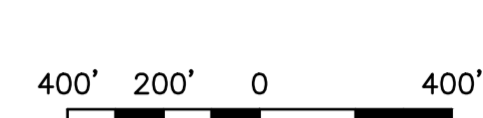
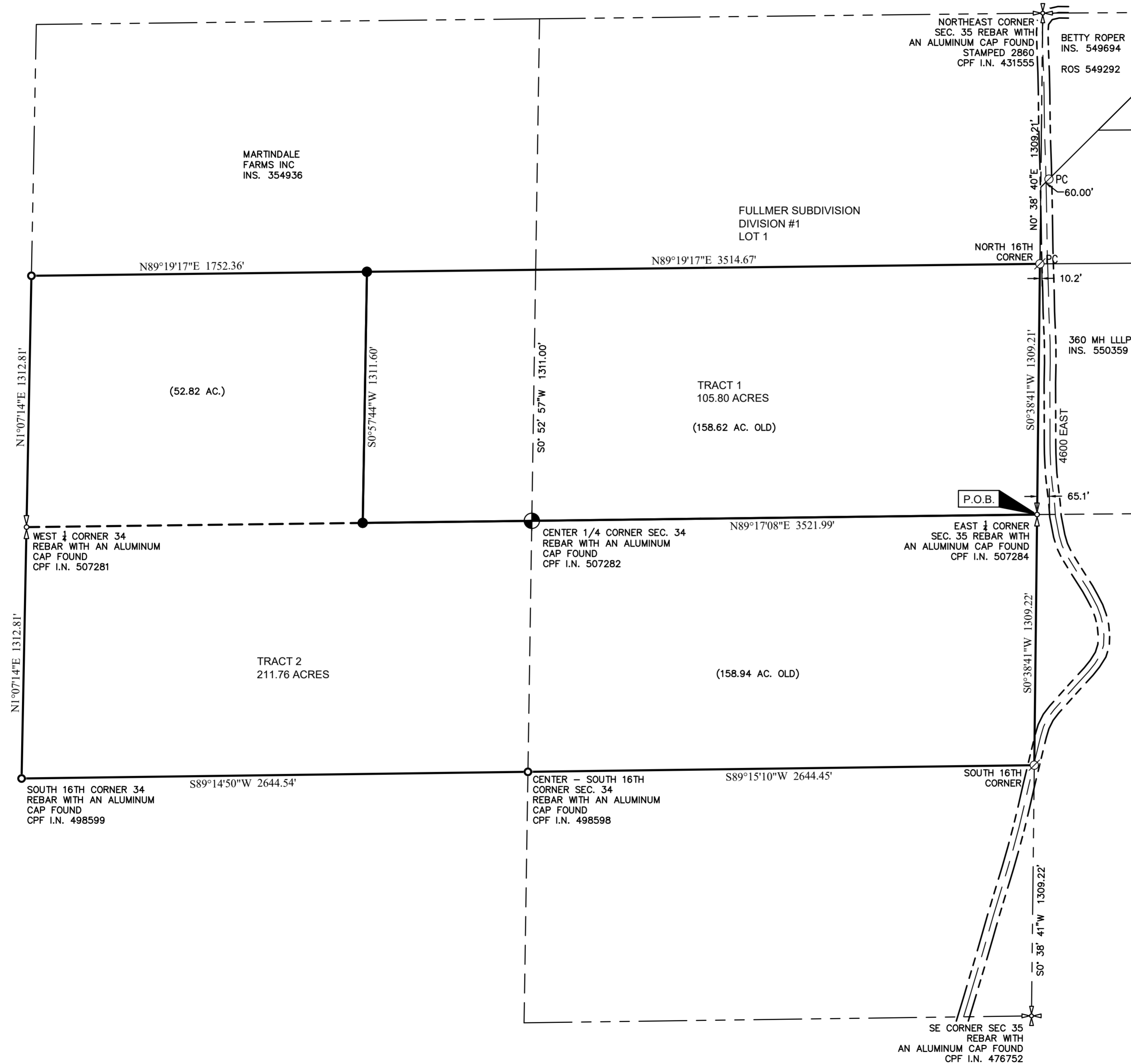
JAY BROWER

PART OF SECTION 34, TWP. 8 N, RANGE 44 E, B.M.
FREMONT COUNTY, IDAHO

NOTES:
BEARINGS SHOWN HEREIN ARE BASED ON THE IDAHO STATE PLANE COORDINATE SYSTEM, EAST ZONE, NAD 83 DATUM. DISTANCES SHOWN HEREON ARE GROUND DISTANCES USING AN AVERAGE PROJECT ELEVATION OF 5900 FEET.

REFERENCES:
THOMPSON ENGINEERING INS. 549292
TETON VIEW SURVEYING INS. 596411
FULLMER SUBDIVISION DIV. #1 INS. 582915
AW ENGINEERING INS. 516651

NARRATIVE:
WE WERE HIRED BY REALTOR JEFF LERWILL TO PREPARE A BOUNDARY ADJUSTMENT BETWEEN THE TWO PARCELS RPO8N44E341801 AND RPO8N44E344800 WE HELD FOUND PINS SHOWN IN ROS INS. 516651



SCALE: 1" = 400'

WARNING
LINE IS 2 INCHES
AT FULL SIZE
(IF NOT 2"-SCALE ACCORDINGLY)



LEGEND

- CENTER 1/4 CORNER (AS NOTED)
- REBAR W/NO CAP FOUND
- REBAR W/PLASTIC CAP FOUND
- SET 1/2" X 24" REBAR WITH A PLASTIC CAP STAMPED "PLS 13856"
- REBAR W/ALUMINUM CAP FOUND
- CONTROLLING SECTION CORNER FND. (AS NOTED)
- QUARTER SECTION CORNER FND. (AS NOTED)
- RIGHT OF WAY
- SECTION LINE
- PROPOSED PROPERTY LINE
- OLD PROPERTY LINE

RECORDER'S CERTIFICATE

Instrument No. _____
Time of Day _____
Recorded in Fremont County, Idaho.

County Recorder

SURVEYOR'S CERTIFICATE

I, JEFFREY M. ROWE, A PROFESSIONAL LAND SURVEYOR IN THE STATE OF IDAHO, NUMBER 13856, DO HEREBY CERTIFY THAT THIS MAP AND THE SURVEY REFERRED TO HEREON WERE PERFORMED UNDER MY RESPONSIBLE CHARGE IN ACCORDANCE WITH IDAHO STATE CODE, RELATING TO SURVEYS.



RECORD OF SURVEY - BROWER
PART OF SECTION 34, TWP. 8 N, R 44 E, B.M.
FREMONT COUNTY, IDAHO

TETON VIEW SURVEYING
2847 East 700 North
St. Anthony, Id. 83445
P: 208.516.6877

Sheet No.: 1 OF 1 Date: 7/10/2023 Project No.: (19-000) Reviewed By: JMR