

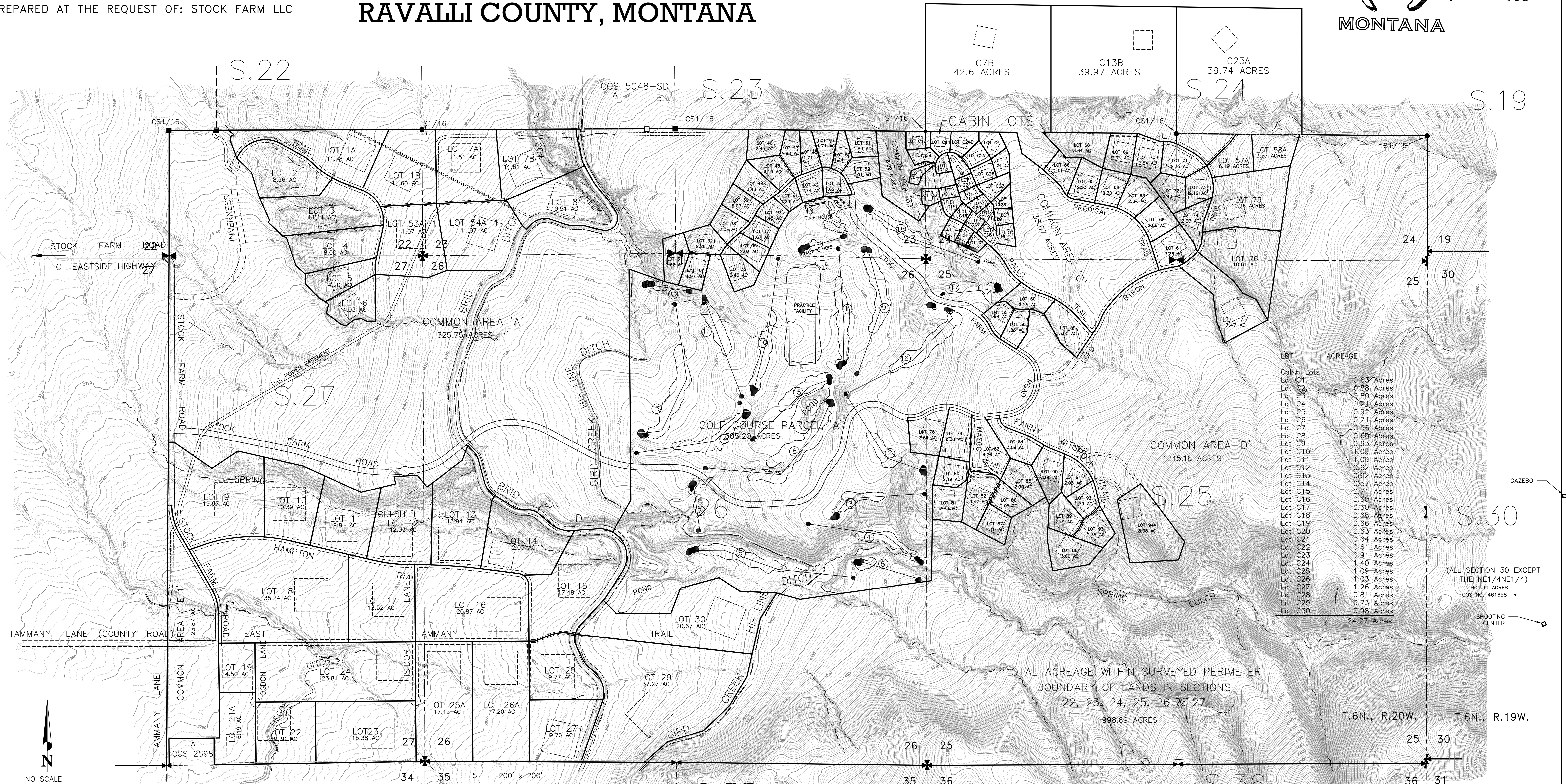
NOTE:
 ALL PROPERTIES SHOWN HEREON (LOTS, COMMON AREAS, AND GOLF COURSE PARCEL "A") ARE SUBJECT TO EASEMENTS AS NECESSARY FOR THE INSTALLATION, OPERATION, AND ONGOING MAINTENANCE OF PRIVATE AND PUBLIC UTILITIES THAT ARE IN PLACE AT THE TIME OF THE FILING OF THIS PLAT.
 ALL RESIDENTIAL STRUCTURES AND SITE LANDSCAPING MUST BE CONFINED TO THE DESIGNATED BUILDING ENVELOPES UNLESS APPROVED BY THE DESIGN REVIEW COMMITTEE.

STOCK FARM

A PLANNED OPEN SPACE COMMUNITY LOCATED IN SECTIONS 22 THRU 27, T.6N., R.20W., AND SECTION 30, T.6N., R.19W., P.M.,M. RAVALLI COUNTY, MONTANA



PREPARED AT THE REQUEST OF: STOCK FARM LLC



LOT	ACREAGE
Common Lots	0.83 Acres
Lot C1	0.88 Acres
Lot C2	0.80 Acres
Lot C3	1.21 Acres
Lot C4	0.92 Acres
Lot C5	0.71 Acres
Lot C6	0.56 Acres
Lot C7	0.60 Acres
Lot C8	0.93 Acres
Lot C9	1.09 Acres
Lot C10	0.62 Acres
Lot C11	0.62 Acres
Lot C12	0.82 Acres
Lot C13	0.57 Acres
Lot C14	0.51 Acres
Lot C15	0.83 Acres
Lot C16	0.60 Acres
Lot C17	0.68 Acres
Lot C18	0.66 Acres
Lot C19	0.64 Acres
Lot C20	0.61 Acres
Lot C21	0.91 Acres
Lot C22	1.40 Acres
Lot C23	1.09 Acres
Lot C24	1.03 Acres
Lot C25	1.26 Acres
Lot C26	0.81 Acres
Lot C27	0.73 Acres
Lot C28	0.98 Acres
Lot C29	24.27 Acres

TOTAL ACREAGE WITHIN SURVEYED PERIMETER BOUNDARY OF LANDS IN SECTIONS 22, 23, 24, 25, 26 & 27
 1998.69 ACRES

Lot No.	Build. Envelope Size	Lot No.	Build. Envelope Size	Lot No.	Build. Envelope Size	Lot No.	Build. Envelope Size	Lot No.	Build. Envelope Size	Lot No.	Build. Envelope Size	Lot No.	Build. Envelope Size	Lot No.	Build. Envelope Size
1A	350' x 350'	10	350' x 350'	21A	300' x 300'	31	150' x 150'	42	150' x 150'	52	150' x 150'	62	200' x 200'	72	200' x 200'
1B	350' x 350'	11	350' x 350'	22	350' x 350'	32	150' x 150'	43	150' x 150'	53A-1	350' x 350'	63	200' x 200'	73	200' x 200'
2	200' x 200'	12	350' x 350'	23	350' x 350'	33	150' x 150'	44	150' x 150'	54A-1	350' x 350'	64	200' x 200'	74	175' x 175'
3	200' x 200'	13	350' x 350'	24	350' x 350'	34	150' x 150'	45	150' x 150'	55	150' x 150'	65	200' x 200'	75	200' x 200'
4	200' x 200'	14	250' x 250'	25A	350' x 350'	35	150' x 150'	46	150' x 150'	56	150' x 150'	66	200' x 200'	76	200' x 200'
5	200' x 200'	15	350' x 350'	26B	350' x 350'	36	150' x 150'	47	150' x 150'			67	200' x 200'	77	200' x 200'
6	200' x 200'	16	350' x 350'	27	350' x 350'	37	150' x 150'	48	150' x 150'			68	200' x 200'	78	200' x 200'
7A	350' x 350'	17	350' x 350'	28	350' x 350'	38	150' x 150'	49	150' x 150'	59	150' x 150'	69	200' x 200'	79	200' x 200'
7B	350' x 350'	18	350' x 350'	29	350' x 350'	39	150' x 150'	50	150' x 150'	60	150' x 150'	70	200' x 200'	80	200' x 200'
8	350' x 350'	19	300' x 300'	30	350' x 350'	40	150' x 150'	51	150' x 150'	61	200' x 200'	71	200' x 200'	81	200' x 200'
9	350' x 350'														

OVERALL SUBDIVISION PLAN WITH BUILDING ENVELOPES SHEET 1 OF 1

APRIL, 2021
 Professional Consultants Inc.
 Engineers, Surveyors, Planners, Mappers.
 3115 RUSSELL ST.
 PO BOX 1750
 MISSOULA, MONTANA
 PHONE 406-728-1880
 FAX 406-728-0276
 PCI PROJECT NO. 5411-96 269-51