

Spring Hill Drive | 3.56 Acres | 500 Feet of Frontage | 18,000 VPD



Listed By:
Sean Bradley
352-293-6089
KW Realty Elite Partners



Table of Contents

- **Executive Summary**
- **Investment Overview**
- **Location Map**
- **Trade Area Map**
- **Area Overview**
- **Visual Overview**
- **Contact Information**

Location Information

Address: 00 Spring Hill Drive
City, State, Zip: Brooksville, FL 34604
County: Hernando

Property Information

Property Type: Commercial
Zoning: Industrial
Price: \$1,100,000
Lot Size: 3.56 Acres

Property Summary

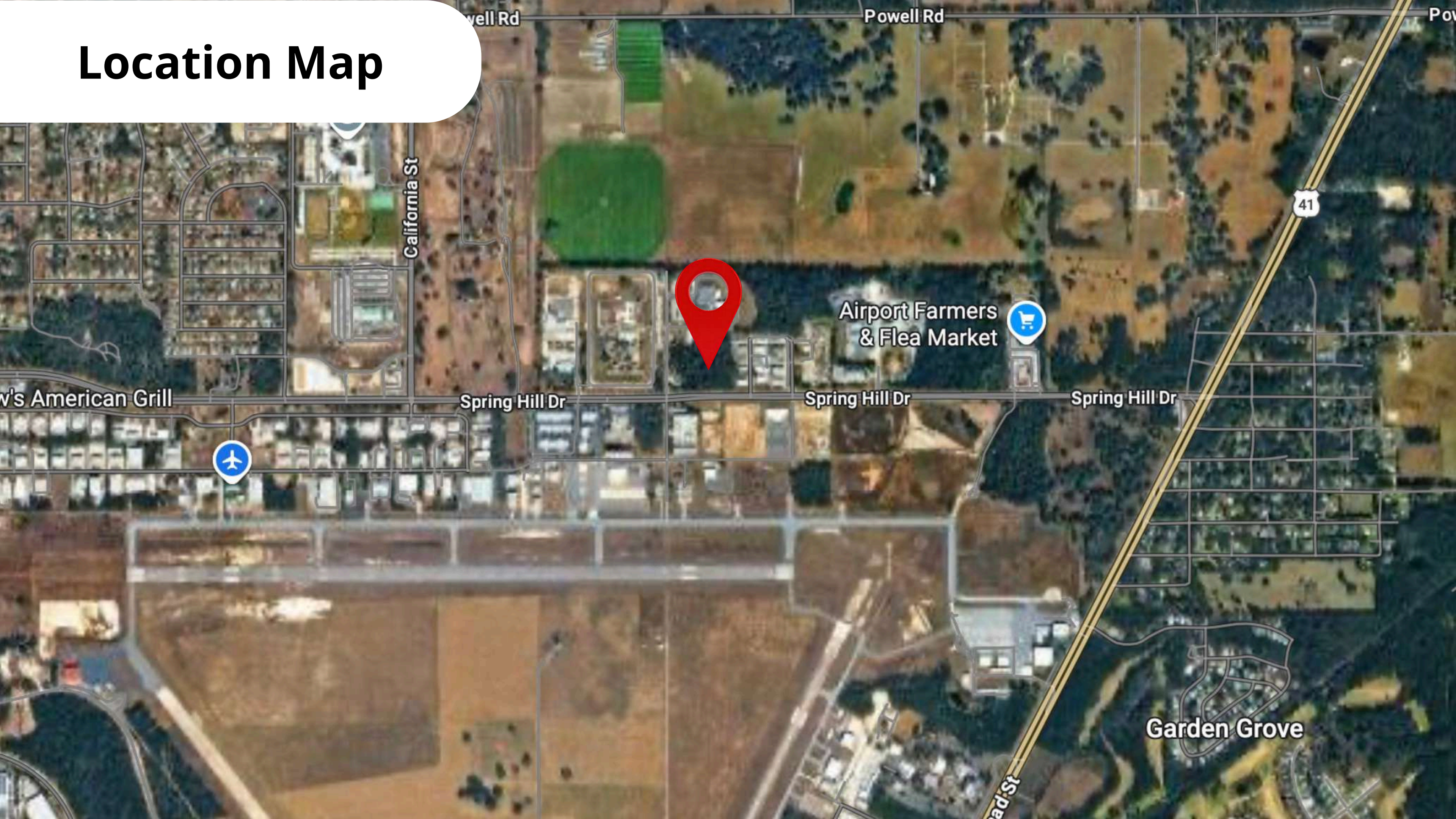
3.5+ Acres Of Vacant INDUSTRIAL Zoned Land. What A Rare Find This Is! Located Along Spring Hill Drive In Hernando County. This Parcel Is Less Than A Mile From The Brooksville-Tampa Bay Regional Airport, And Less Than 5 Min To Either Us-41 Or Toll Road 589 Suncoast Expressway. Parcel Has Over 18,000 Vehicles Per Day Passing In Front. Don't Miss This Great Opportunity. Call Today!



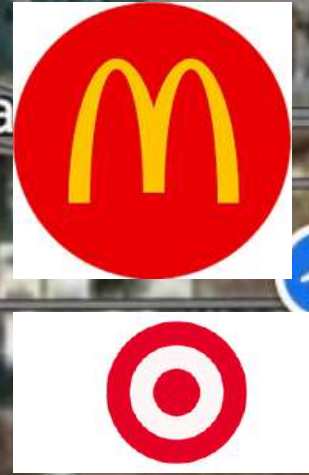
Investment Overview

Price:	\$1,100,000
Lot Size:	3.56 Acres
Zoning:	Industrial
Price Per Acre:	\$309,989
2025 Annual Taxes:	\$1,663
Road Access:	Paved Road Access
VPD:	18,000
Frontage:	500 FT

Location Map



Trade Area Map



Location & Accessibility

Located in Hernando County in west-central Florida, Brooksville sits just inland from the Gulf Coast and serves as the county seat. The city is accessible via U.S. 41, U.S. 98, and State Road 50, offering convenient routes to Tampa, Spring Hill, and other nearby communities.

Population & Lifestyle

With a population of around 9,000 residents, Brooksville offers a quieter, small-town atmosphere compared to neighboring suburban areas. Known for its historic downtown, oak-lined streets, and rolling hills, the community appeals to those seeking a slower pace of life while still being within reach of larger metro amenities. Outdoor recreation, local events, and a strong sense of community are central to the Brooksville lifestyle.

Economy & Development

Brooksville's economy is driven by government services, healthcare, agriculture, and small businesses. As part of the growing Tampa Bay region, the area has seen gradual development, particularly in residential housing and commercial growth. Its historic character and proximity to larger employment hubs make it an appealing option for both residents and investors.

Visual Overview



Contact Information

Listed By:
Sean Bradley
KW Realty Elite Partners
352-293-6089
seanbradley@kw.com
00 Spring Hill Drive,
Brooksville, FL 34604
MLS #: W7884618

For more properties like this one,
check out our website:
<https://www.bradleyteamkw.com>





All information contained herein is deemed reliable but not guaranteed. Buyers are responsible for verifying all details with county records and their real estate advisors. The property is offered "as-is" and subject to change without notice.