



Kyle Selby, MSRE
kselby@selbyrealty.com
(386) 295-3313



**SELBY
REALTY**

200 E. Granada Blvd., Suite 207
Ormond Beach, FL 32176
(386) 238-4456 O.
(386) 238.8377 F.

**6,037SF—24,062
THREE
WAREHOUSE SPACES
FOR LEASE**



**405 N. Charles St.
Units 110A, 110B, and 130
Daytona Beach, FL 32114**

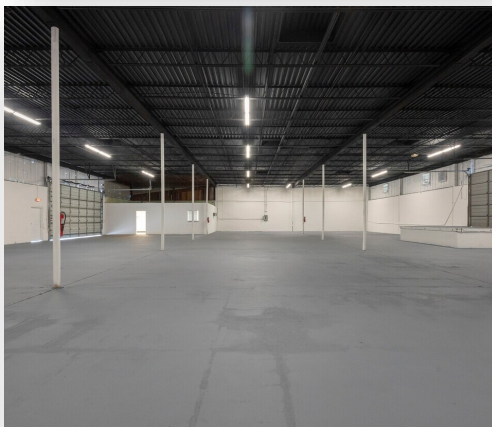
Property Highlights

- 405 N Charles St — Multi-Tenant Industrial Business Center
- Recent renovations. Newly painted and move-in ready
- Very large, fenced and resurfaced parking field
- Unit 110A : 6,037sf with 1 overhead door
- Unit 110B: 6,575sf with 1 overhead door
- Unit 130: 11,450sf with 4 overhead doors
- 16+ Clear Height

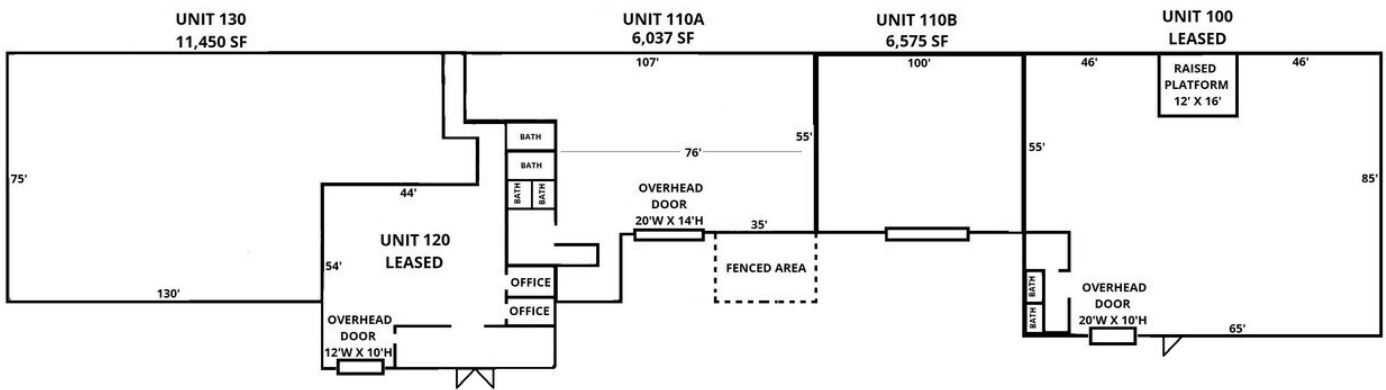


Property Details

- Site:** Centrally located property close to Ridgewood Blvd. and 5 miles from I95
- Building:** Multi-Tenant Warehouse Building
- Rate:** \$10.50 Base Rent
- Passthroughs:** Estimated to be \$3.85
- Signage:** Monument signage on George Engram
- Zoning:** RDD-7, City of Daytona Beach
- Traffic:** 10,000 (AADT 2020)
- Availability:** Units 110A and 110B are available immediately. Unit 130 is occupied but can be delivered upon execution of a lease



BUILDING FLOOR PLAN



ADDITIONAL PICTURES



**SELBY
REALTY**



*Pictures 2 and 3 are AI generated
to show what the space could look
like.*



405 N Charles St. PROPERTY MAP

