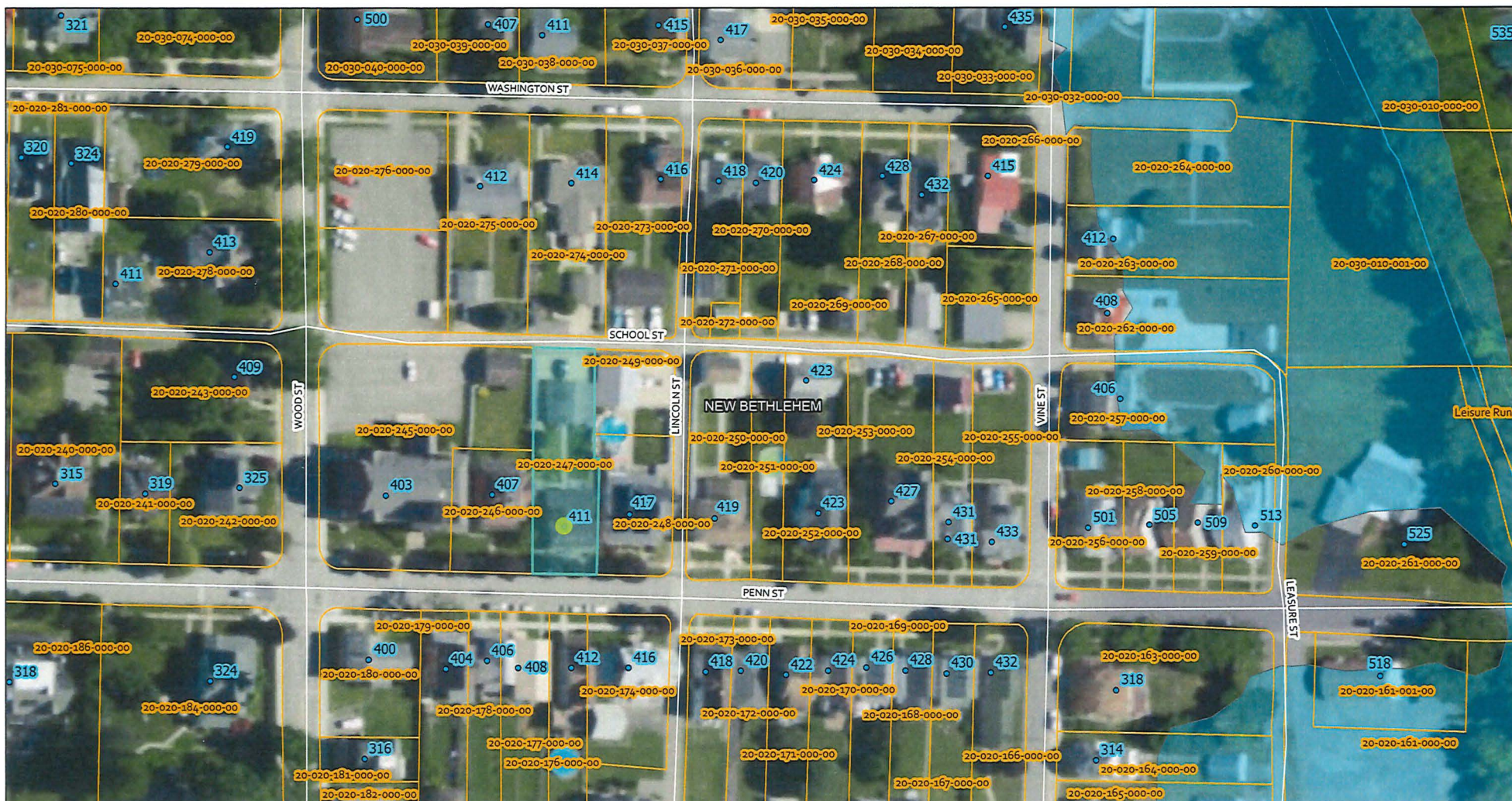


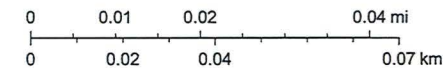
Clarion County Self-Service Map



4/10/2026, 10:09:45 AM

- Esri World Geocoder
- Parcels
- Municipal Boundaries
- Addresses
- Streams (Ch. 93 Designated)
- Roads
- 100 Year Floodplain

1:1,229



Source: Esri, USDA FSA, Source: Esri, Vantor, Earthstar Geographics, and the GIS User Community, Sources: Esri, TomTom, Garmin, FAO, NOAA, USGS, © OpenStreetMap contributors, and the GIS User Community

Data is a low-accuracy estimate. Clarion County GIS is not liable for misuse.