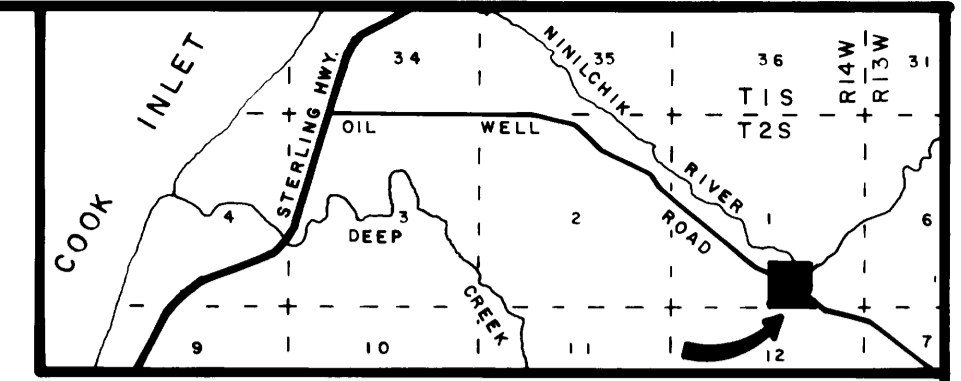


# Matson Subdivision

LOCATED IN SW1/4SE1/4 SEC. 1, T.2S., R.14W., S.M., NINILCHIK, ALASKA  
 SCALE 1" = 100' AREA = 34.404 AC. 11-18-1983  
 BY LAWRENCE MATSON, BOX 112 NINILCHIK, ALASKA 99639



VICINITY 1" = 1 mi. MAP

## PLAT APPROVAL

This plat was approved by the Kenai Peninsula Borough Planning Commission at the meeting of July 4 1983.

KENAI PENINSULA BOROUGH

BY Frank J. Leger

## NOTE

A building setback of 20' from all street rows is required unless a lesser standard is approved by a resolution of the appropriate planning commission.

Building setback line to be limit of utility easements along streets.

A 10' pedestrian easement along right and left bank of Ninilchik River.

No structure shall be placed on panhandle portion of Lot 7.

No waste water disposal facilities shall be placed on TRACT A without prior approval of ALASKA DEPARTMENT OF ENVIRONMENTAL CONSERVATION

## LEGEND

- ⊕ - 1919 brass cap mon. by GLO, found
- ⊙ - 1969 brass cap mon. by 268-S, found
- - Brass cap mon. by 268-S, set 1983
- - 1/2" x 2" rerod, set
- - 1983 al. mon., P.C. row, found in pavement
- ≡ - Swampy ground

## CURVES

1	2	3	4
A - 5°-33'-07"	A - 13°-04'-28"	A - 2°-06'-39"	A - 10°-40'-13"
R - 815.44'	R - 815.44'	R - 815.44'	R - 50'
C - 78.99'	C - 185.67'	C - 30.04'	C - 151.64'
T - 39.54'	T - 93.44'	T - 15.02'	T - 76.15'
L - 79.02'	L - 186.08'	L - 30.04'	L - 151.86'
BC - N64°-43'-56"W	BC - N55°-25'-09"W	BC - N47°-49'-37"W	BC - N41°-26'-08"W

5	6	7	8	9
A - 115°-36'-48"	A - 27°-09'-33"	A - 4°-14'-57"	A - 126°-10'-45"	A - 90°-02'-15"
R - 50'	R - 715.44'	R - 715.44'	R - 50'	R - 20'
C - 84.63'	C - 335.96'	C - 53.05'	C - 89.17'	C - 28.29'
T - 79.42'	T - 172.81'	T - 26.54'	T - 98.51'	T - 20.01'
L - 100.89'	L - 339.13'	L - 53.06'	L - 110.11'	L - 31.43'
BC - S83°-55'-42"E	BC - S38°-13'-40"E			

## OWNER'S CERTIFICATE & DEDICATION

We hereby certify that we are the owners of the property shown and described hereon, and that we hereby adopt this plan of subdivision, and dedicate all rows to public use, and grant all easements to the uses shown.

Lawrence Matson  
 Lawrence Matson box 112 Ninilchik, Ak. 99639

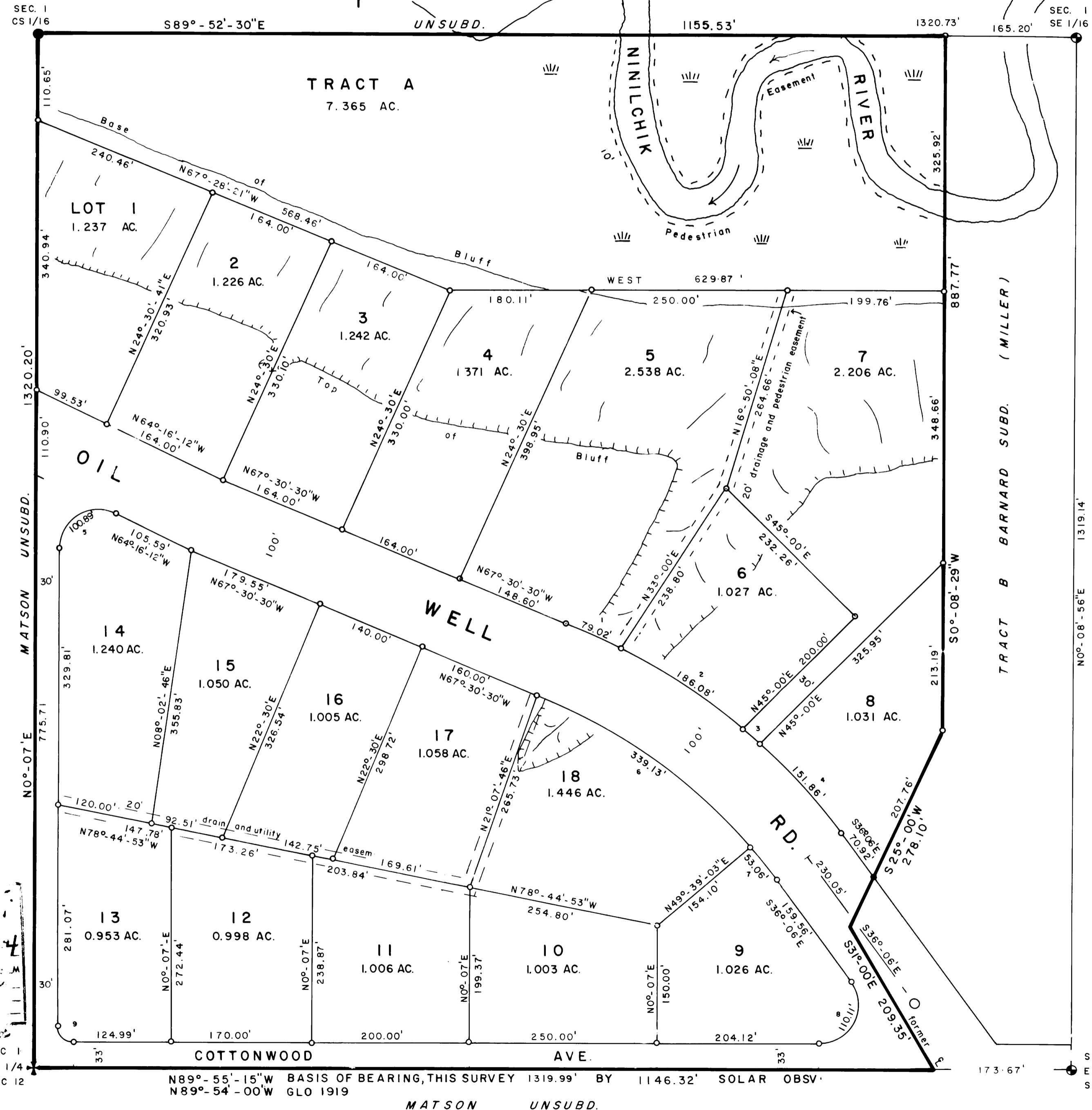
## NOTARY'S ACKNOWLEDGEMENT

Subscribed and sworn to before me this 26 day of April 1983.

Fredrick J. Johnson  
 NOTARY FOR ALASKA for Lawrence Matson  
 My commission expires 12-31-84

84-41  
 HOMER  
 5-1-84  
 H. Johnson  
 KPB  
 Soldatno

CERTIFICATE OF APPROVAL BY THE ALASKA DEPARTMENT OF ENVIRONMENTAL CONSERVATION  
 This plan has been reviewed in accordance with the requirements of AS 11.60.01 and approved subject to any noted restrictions.  
[Signature]  
 TITLE DATE 3-12-84



HM 84-41