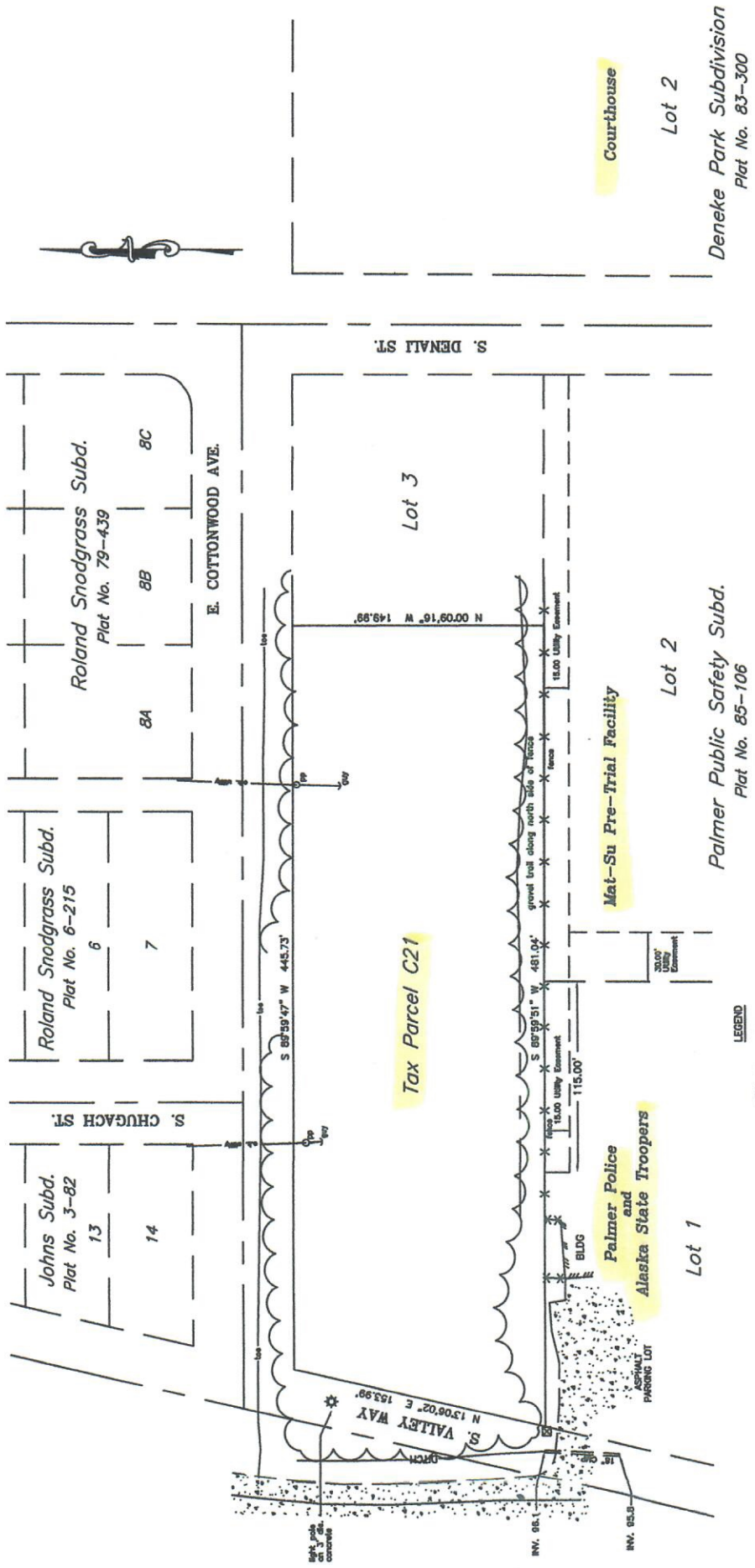


PRELIMINARY SURVEY

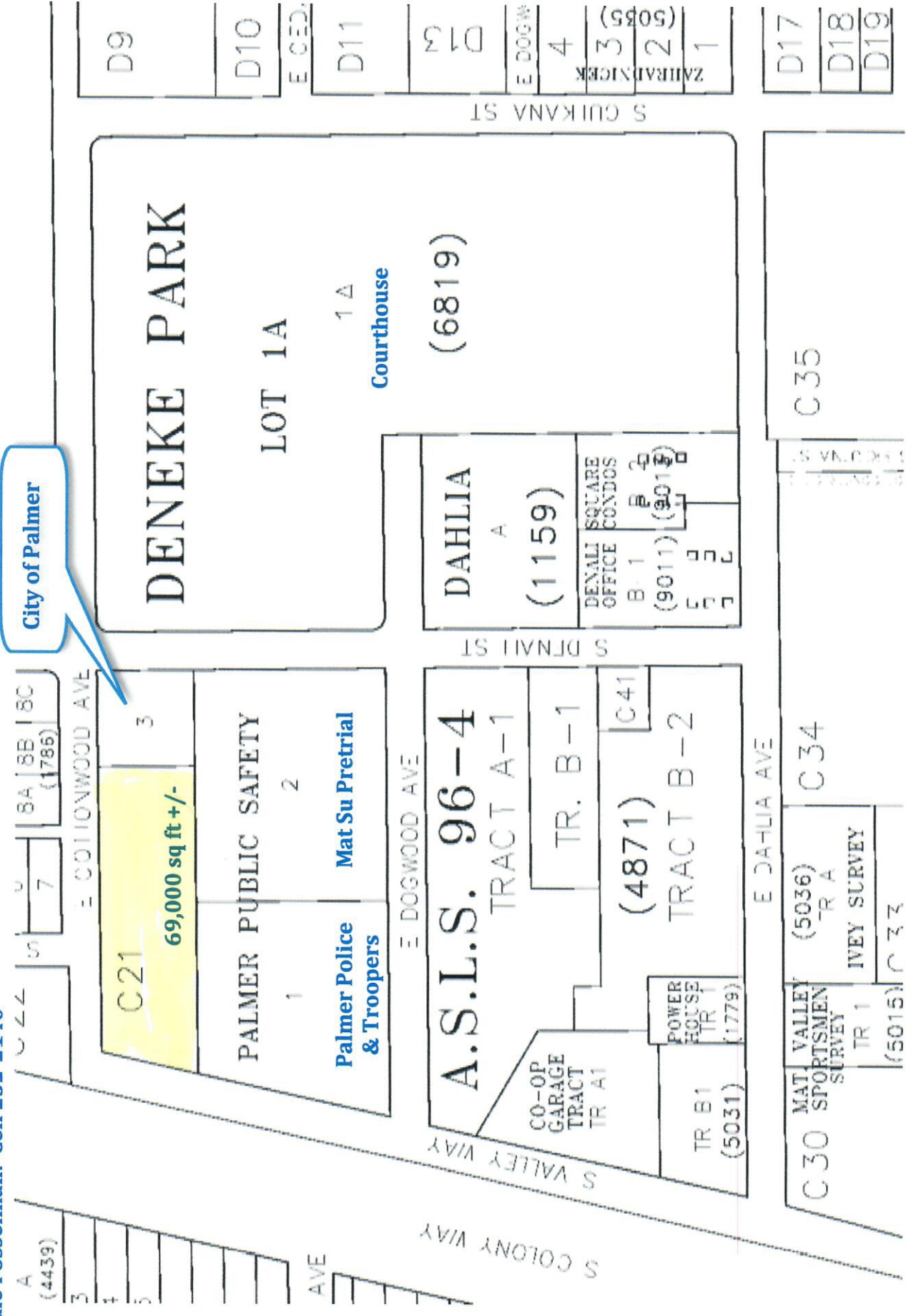


Deneke Park Subdivision
Plat No. 83-300

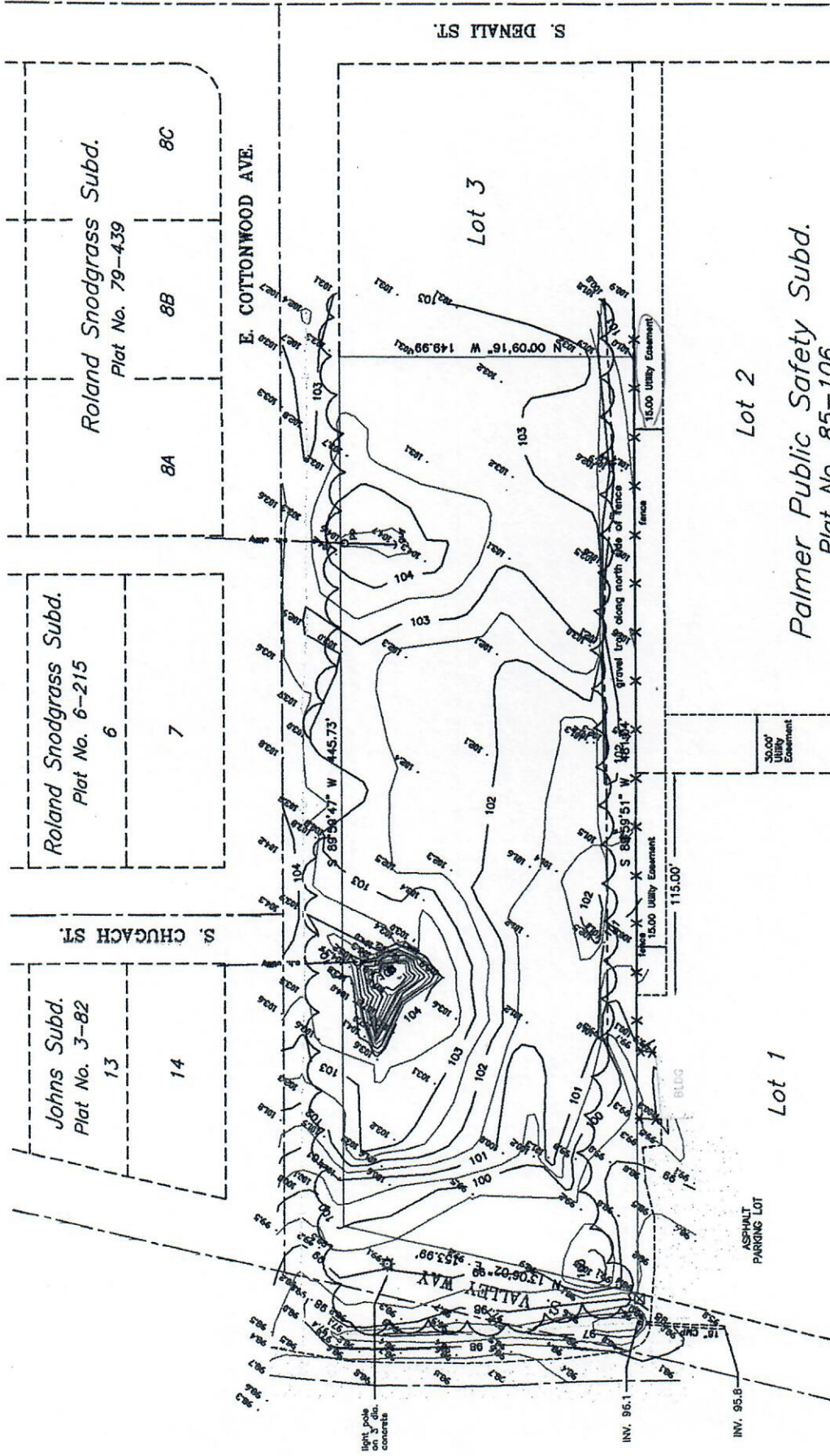
Palmer Public Safety Subd.
Plat No. 85-106

- LEGEND
- TREES
 - UTILITY POLE
 - GUY WIRE
 - MTA PEDESTAL
 - LIGHT POLE
 - FENCE
 - 18" CHIP
 - DITCH

Dale Fosselman: Cell 232-2140



PRELIMINARY SURVEY



LEGEND

- TREES
- UTILITY POLE
- GUY WIRE
- MTA PEDESTAL
- LIGHT POLE
- FENCE
- 18" CMP
- DITCH

BASIS OF ELEVATION

TBM PP LOCATED AT THE NE CORNER OF THE INTERSECTION OF E. COTTONWOOD AVE. AND S. VALLEY WAY. ELEVATION: 100.00 ASSUMED.

NOTE

BEARINGS AND DISTANCE ARE RECORD INFORMATION TAKEN FROM PALMER PUBLIC SAFETY SUBMISSION, PLAT No. 85-108

Roland Snodgrass Subd.
Plat No. 79-439

Roland Snodgrass Subd.
Plat No. 6-215

Johns Subd.
Plat No. 3-82

Lot 2
Palmer Public Safety Subd.
Plat No. 85-106

Lot 1

S. DENALI ST.

E. COTTONWOOD AVE.

S. CHUGACH ST.

VALLEY WAY

S. VALLEY WAY

ASPHALT
PARKING LOT

light pole
on 3" dia.
concrete

INV. 96.1

INV. 95.8

115.00'

30,000'
Utility
Easement

15,000' Utility Easement

15,000' Utility Easement

Lot 3

8C

8B

8A

6

7

13

14

