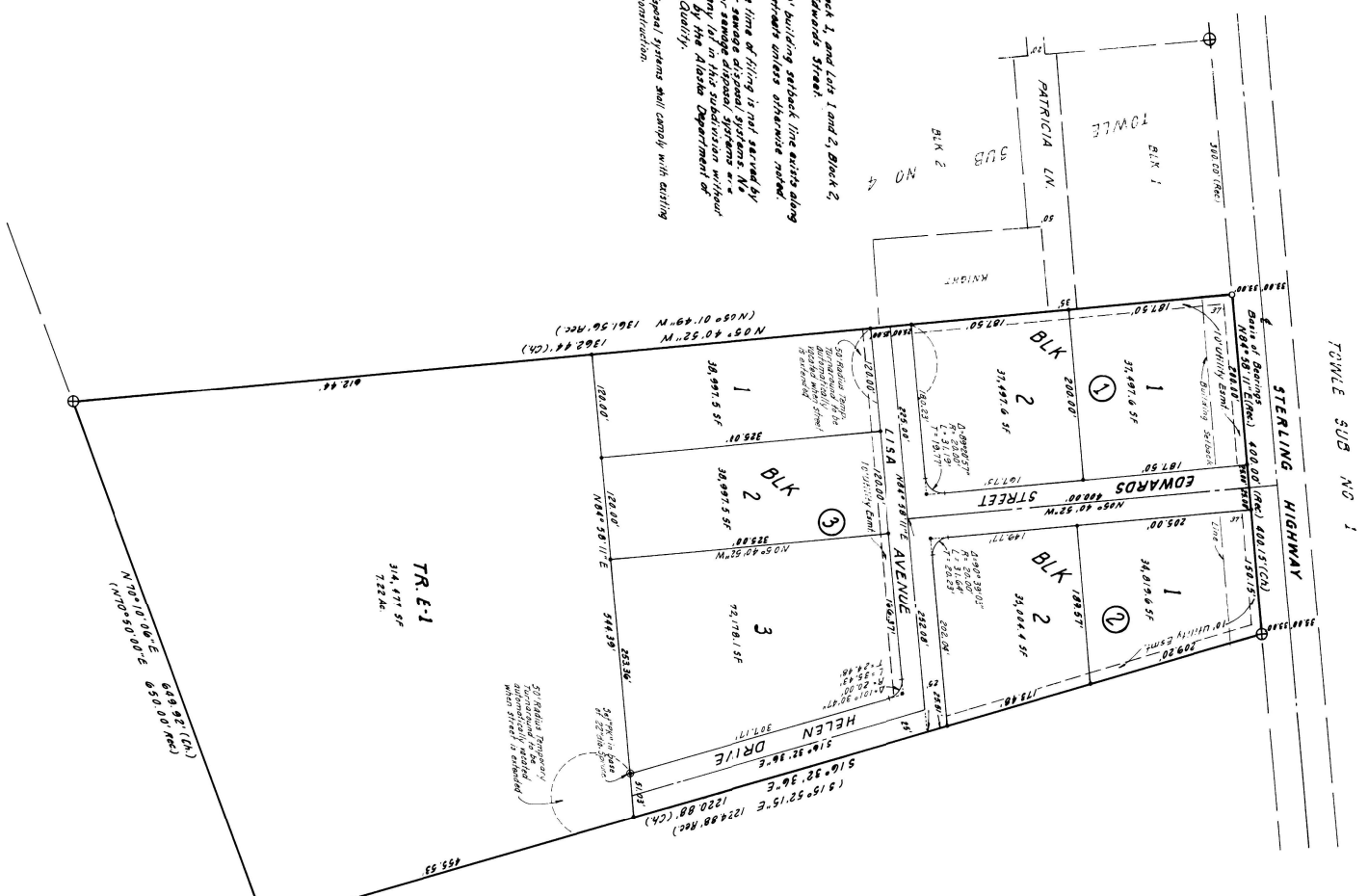


- NOTES:
1. Lots 1 and 2, Block 1, and Lots 1 and 2, Block 2, front only on Edwards Street.
 2. A minimum 20' building setback line exists along all dedicated streets unless otherwise noted.
 3. This plat of the line of filing is not saved by existing water or sewage disposal systems. No on-site water or sewage disposal systems are permitted on any lot in this subdivision without prior approval by the Alaska Department of Environmental Quality.
 4. All wastewater disposal systems shall comply with existing laws of line of construction.



TR E-1
314,471 SF
7.22 Ac.

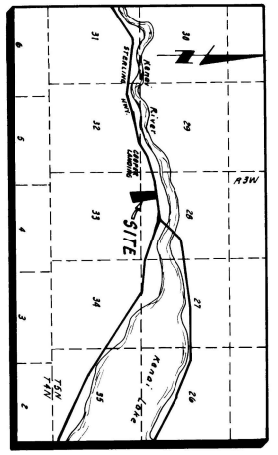
N 72° 10' 18" E 649.92' (CN)
N 70° 50' 00" E 650.00' (REC)

RECORDED FILED 3-20
SERIALIZED REC. DEPT.
2/16 11:42 a.m.
2nd Auditor
3107 W. 29th Ave.
ANCHORAGE, ALASKA 99503



LEGEND
○ Original & Refer
⊕ Original Copied & Refer
⊙ Returned this survey
* 1/2" = 30' Refer, See this Survey

NOTE: P.T.'s are set with 1/2" = 30' Refer



CERTIFICATE OF OWNERSHIP & DEDICATION

We hereby certify that we are the owners of the property shown and described hereon. We hereby request approval of this plat, showing such easements for public utilities, roadways and alleys dedicated by us for public use.

Henry E. Edwards
Notary Public
State of Alaska

Notarized Book of data by: 28714-288 A.P.P.
No. 5-3489 received
Anchorage, Alaska 99501

Subscribed and sworn before me this 29th day of January, 1977
Fred Walatka
Notary for Alaska
My Commission expires

PLAT APPROVAL

Plat approved by the Borough Planning Commission this 3rd day of January, 1977
William J. Planning Director

SURVEYOR'S CERTIFICATE

I, Fred Walatka, professional land surveyor, do hereby certify that this plat is a true and correct representation of lands actually surveyed and that all correct and necessary information has been furnished. The plat is a true and correct representation of lands actually surveyed and that all correct and necessary information has been furnished. The plat is a true and correct representation of lands actually surveyed and that all correct and necessary information has been furnished.

Date January 20, 1977
Fred Walatka

AREA 15,374 Ac. PLAT OF

TOWLE SUBD. ADD. NO. 6

A SUBDIVISION OF TRACT E, TOWLE SUBDIVISION
LOCATED IN SW 1/4 Sec. 28, & NW 1/4 Sec. 33 13N, 33W, S.M., ALASKA
FRED WALATKA & ASSOCIATES
ENGINEERS - SURVEYORS
3107 W. 29th Avenue
Anchorage, Alaska

DATE: July 1976 SCALE: 1" = 100'
DRAWN: DS SHEET: 1 OF 1
CHECKED: FW GRID: