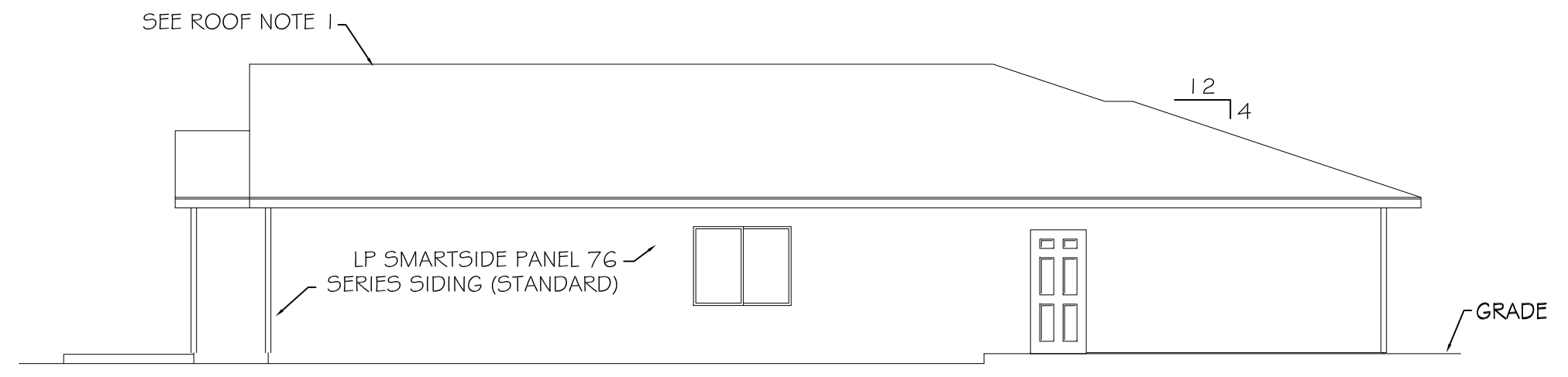
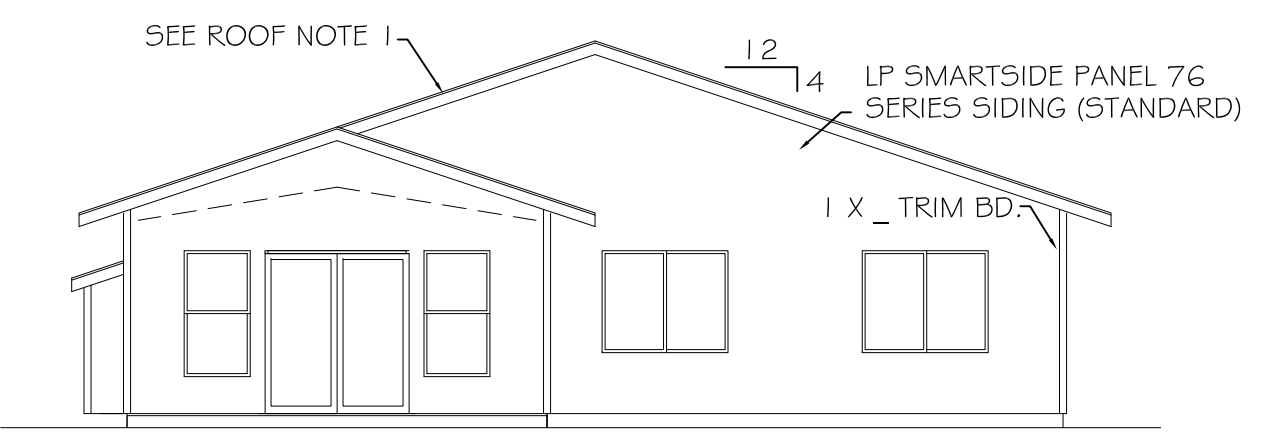




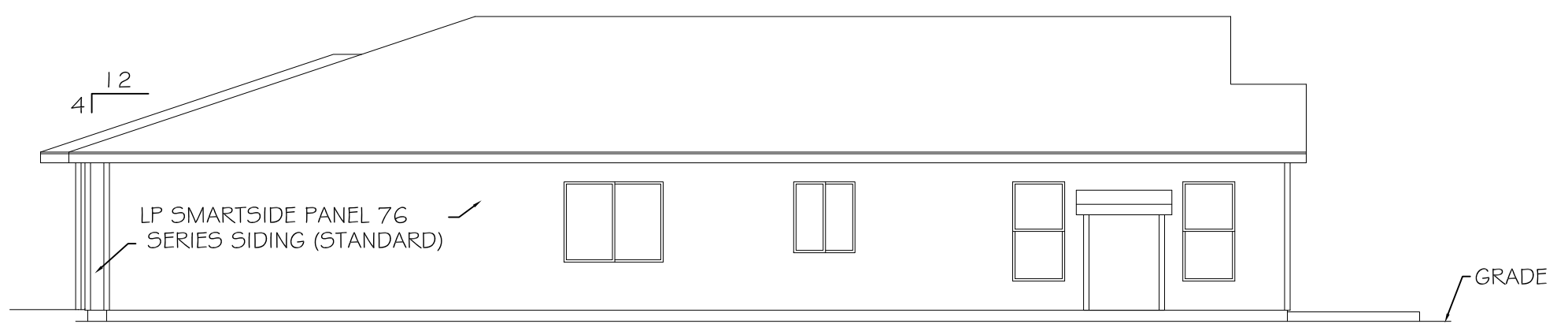
FRONT ELEVATION "C"
SCALE: 1/4" = 1'-0"



LEFT ELEVATION
SCALE: 1/8" = 1'-0"

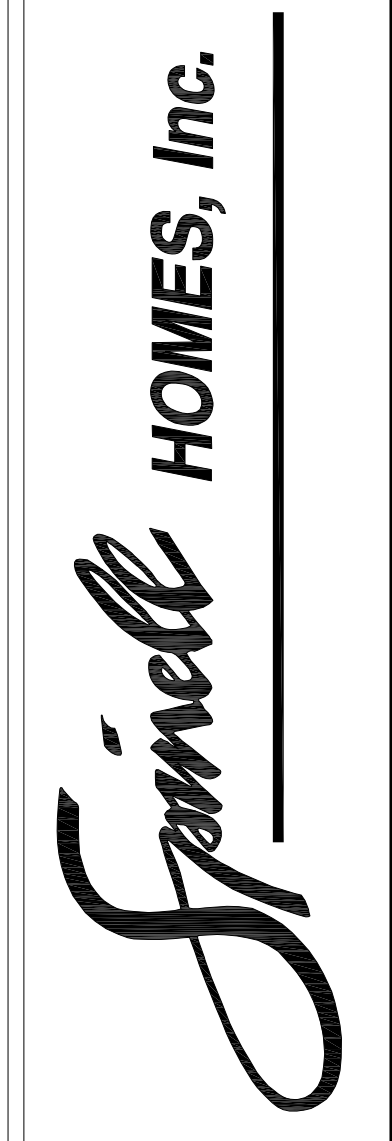


REAR ELEVATION
SCALE: 1/8" = 1'-0"

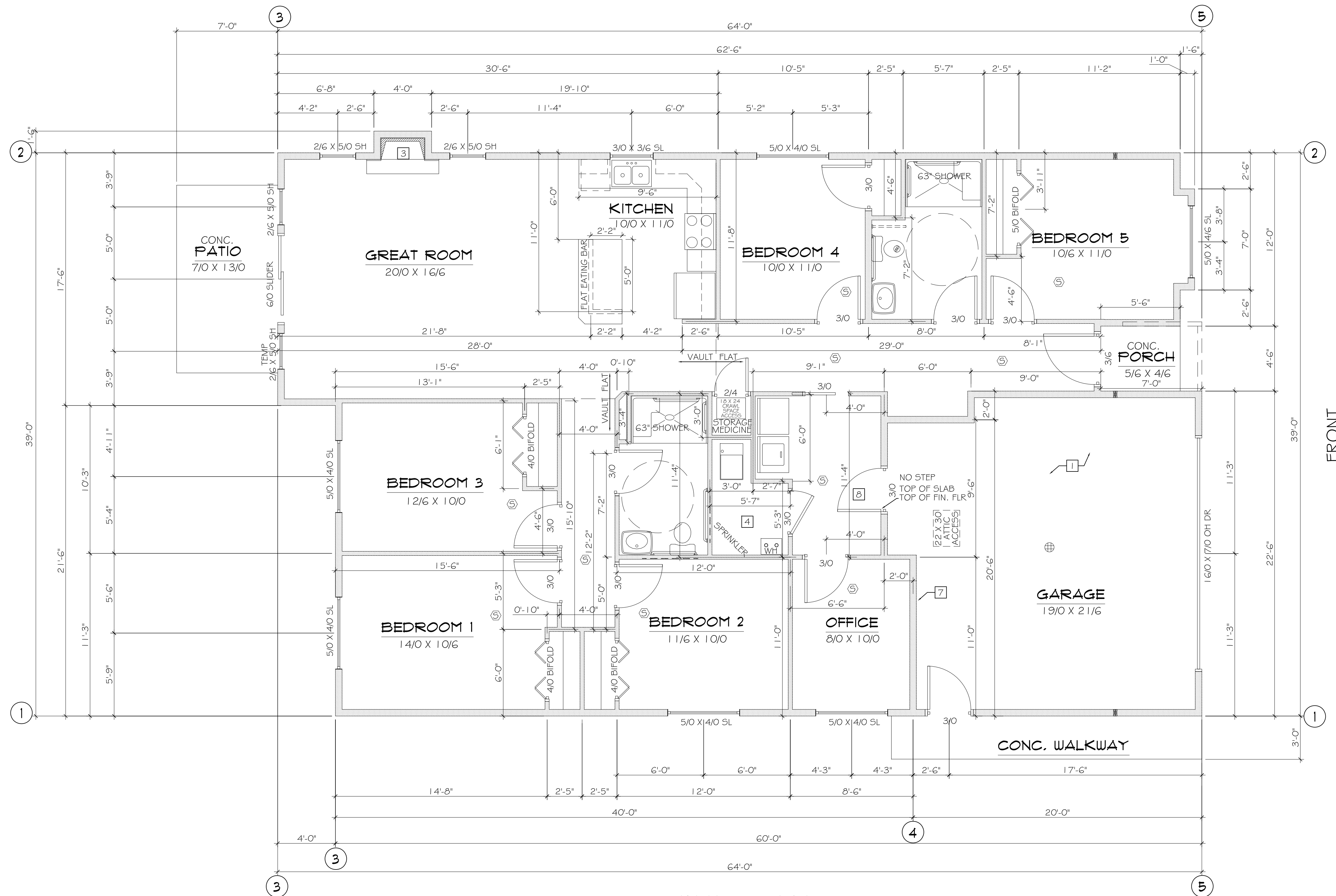


RIGHT ELEVATION
SCALE: 1/8" = 1'-0"

1900 W. NORTHERN LIGHTS BLVD.
ANCHORAGE, ALASKA 99517
907-344-5678 FAX 907-344-1976
ALL IDEAS, DRAWINGS AND/OR ARRANGEMENTS PRESENTED
ON THESE PAGES ARE THE EXCLUSIVE PROPERTY OF SPINELL
HOMES, INC. ANY UNAUTHORIZED REPRODUCTION OR USE IS
STRICTLY PROHIBITED.



| | |
|---------------|---------------|
| DRAWING TITLE | ELEVATION "C" |
| PROJECT NAME | MAVERICK |
| DATE | 1930 |
| DATE DRAWN | 3-4-25 |
| SHEET | 1 |



1ST FLOOR PLAN
SCALE: 1/4" = 1'-0"

FRONT

1900 W. NORTHERN LIGHTS BLVD.
ANCHORAGE, ALASKA 99517
907-344-5678 FAX 907-344-1976
ALL IDEAS, DRAWINGS AND/OR ARRANGEMENTS PRESENTED
ON THESE PAGES ARE THE EXCLUSIVE PROPERTY OF SPINELL
HOMES, INC. ANY UNAUTHORIZED REPRODUCTION OR USE IS
STRICTLY PROHIBITED.



| | |
|---------------|------------|
| DRAWING TITLE | FLOOR PLAN |
| PROJECT NAME | MAVERICK |
| DATE | 1930 |
| DRAWN BY | 3-4-25 |
| SHEET | 3 |

SQUARE FOOTAGE
TOTAL 1930 S.F.
GARAGE 442 S.F.