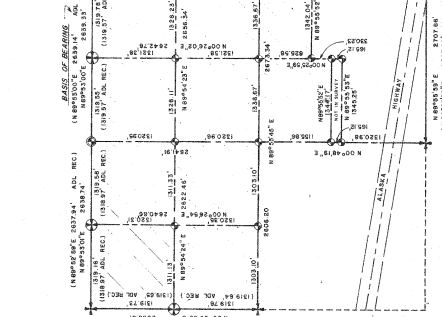


BEARING TREE DATA

Corner	Species	Height	Remarks
101+10	Alfalfa	10'	Very small tree
102+10	Alfalfa	10'	Very small tree
103+10	Alfalfa	10'	Very small tree
104+10	Alfalfa	10'	Very small tree
105+10	Alfalfa	10'	Very small tree
106+10	Alfalfa	10'	Very small tree
107+10	Alfalfa	10'	Very small tree
108+10	Alfalfa	10'	Very small tree
109+10	Alfalfa	10'	Very small tree
110+10	Alfalfa	10'	Very small tree
111+10	Alfalfa	10'	Very small tree
112+10	Alfalfa	10'	Very small tree
113+10	Alfalfa	10'	Very small tree
114+10	Alfalfa	10'	Very small tree
115+10	Alfalfa	10'	Very small tree
116+10	Alfalfa	10'	Very small tree
117+10	Alfalfa	10'	Very small tree
118+10	Alfalfa	10'	Very small tree
119+10	Alfalfa	10'	Very small tree
120+10	Alfalfa	10'	Very small tree

TRAIL TRAVERSE

Station	Bearing	Distance	Remarks
1	S. 89° 47' 10" E	290.62	Corner 101+10
2	S. 89° 47' 10" E	100.00	Corner 102+10
3	S. 89° 47' 10" E	100.00	Corner 103+10
4	S. 89° 47' 10" E	100.00	Corner 104+10
5	S. 89° 47' 10" E	100.00	Corner 105+10
6	S. 89° 47' 10" E	100.00	Corner 106+10
7	S. 89° 47' 10" E	100.00	Corner 107+10
8	S. 89° 47' 10" E	100.00	Corner 108+10
9	S. 89° 47' 10" E	100.00	Corner 109+10
10	S. 89° 47' 10" E	100.00	Corner 110+10
11	S. 89° 47' 10" E	100.00	Corner 111+10
12	S. 89° 47' 10" E	100.00	Corner 112+10
13	S. 89° 47' 10" E	100.00	Corner 113+10
14	S. 89° 47' 10" E	100.00	Corner 114+10
15	S. 89° 47' 10" E	100.00	Corner 115+10
16	S. 89° 47' 10" E	100.00	Corner 116+10
17	S. 89° 47' 10" E	100.00	Corner 117+10
18	S. 89° 47' 10" E	100.00	Corner 118+10
19	S. 89° 47' 10" E	100.00	Corner 119+10
20	S. 89° 47' 10" E	100.00	Corner 120+10



BEARINGS TREE DATA

Corner	Species	Height	Remarks
101+10	Alfalfa	10'	Very small tree
102+10	Alfalfa	10'	Very small tree
103+10	Alfalfa	10'	Very small tree
104+10	Alfalfa	10'	Very small tree
105+10	Alfalfa	10'	Very small tree
106+10	Alfalfa	10'	Very small tree
107+10	Alfalfa	10'	Very small tree
108+10	Alfalfa	10'	Very small tree
109+10	Alfalfa	10'	Very small tree
110+10	Alfalfa	10'	Very small tree
111+10	Alfalfa	10'	Very small tree
112+10	Alfalfa	10'	Very small tree
113+10	Alfalfa	10'	Very small tree
114+10	Alfalfa	10'	Very small tree
115+10	Alfalfa	10'	Very small tree
116+10	Alfalfa	10'	Very small tree
117+10	Alfalfa	10'	Very small tree
118+10	Alfalfa	10'	Very small tree
119+10	Alfalfa	10'	Very small tree
120+10	Alfalfa	10'	Very small tree

DEDICATION OF EASEMENTS, PUBLIC UTILITIES, AND ROADWAYS

The undersigned, hereby certify that I, the Director, Alaska Department of Natural Resources, have approved the dedication of easements, public utilities, and roadways as shown and described herein.

Date: 3-17-78
By: *Ray A. Walker*
Director, Alaska Department of Natural Resources

OWNERSHIP CERTIFICATE

I, the undersigned, hereby certify that I am the Director, Alaska Department of Natural Resources, and that I have approved the survey and plat for the State of Alaska.

Date: 3-17-78
By: *Ray A. Walker*
Director, Alaska Department of Natural Resources

NOTARY'S ACKNOWLEDGEMENT

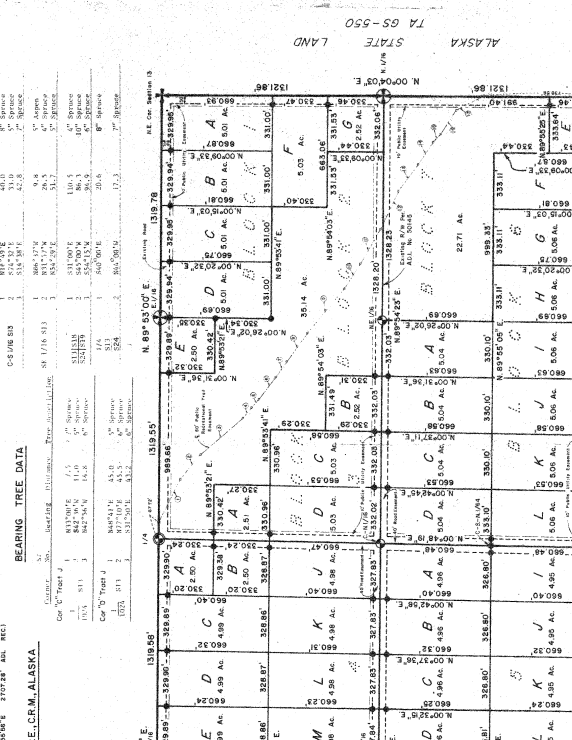
I, the undersigned, hereby certify that I am the Director, Alaska Department of Natural Resources, and that I have approved the survey and plat for the State of Alaska.

Date: 3-17-78
By: *Ray A. Walker*
Director, Alaska Department of Natural Resources

SURVEYOR'S CERTIFICATE

I, the undersigned, hereby certify that I am a duly qualified and Licensed Surveyor in the State of Alaska, and that I have surveyed and laid out the survey and plat for the State of Alaska, and that all dimensions and other details are as described, and that all dimensions and other details are as shown on the plat.

Date: 3-17-78
By: *Ray A. Walker*
Surveyor



LEGAL DESCRIPTION

The NE 1/4 of the NE 1/4 of the SE 1/4 of the NE 1/4 of the SE 1/4 of Section 13, T.18N., R.12E., C.R.M., Alaska, containing 3807 Acres, more or less.

(64.29 Hectares)

NOTES

- This survey was conducted under the terms of Contract No. G-1-C-109.
- General Survey of Sections 13, 20, 27, and 34, T.18N., R.12E., C.R.M., Alaska, approved on 12/19/77 and filed at Fairbanks recording district on 12/19/77.
- Bearings and distances shown herein are results of a local meridian traverse on the ground. The traverse was run on the ground and the bearings and distances were measured on the ground. The bearings and distances were measured on the ground and the bearings and distances were measured on the ground.
- All blocks and tracts shown herein are subject to the claims of Section 13, T.18N., R.12E., C.R.M., Alaska. The dimensions shown are from the corner monument to the corner monument. The dimensions shown are from the corner monument to the corner monument.
- All areas shown herein include the number statement, which affect the individual block or tract.

DATE OF SURVEY
1978

NAME OF SURVEYOR
ABC SURVEYS, LTD

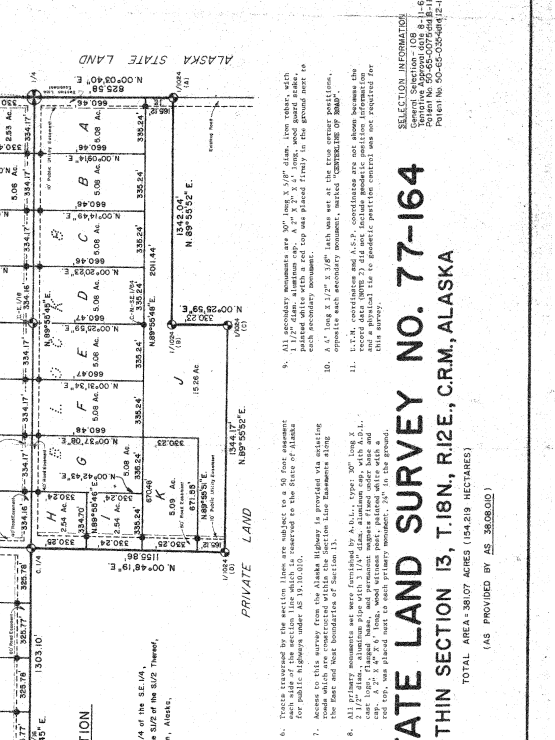
DATE OF ALASKA DEPARTMENT OF NATURAL RESOURCES APPROVAL
3-17-78

APPROVAL
Ray A. Walker
Director, Alaska Department of Natural Resources

APPROVED
3-17-78

SCALE
1" = 300'

FILE NO.
77-164



SELECTION INFORMATION

ALASKA STATE LAND SURVEY NO. 77-164
WITHIN SECTION 13, T.18N., R.12E., C.R.M., ALASKA

APPROVAL RECOMMENDED: *Ray A. Walker*
APPROVED: *Ray A. Walker*
CHECKED: *Ray A. Walker*

DATE: 3-17-78

FILE NO.: 77-164