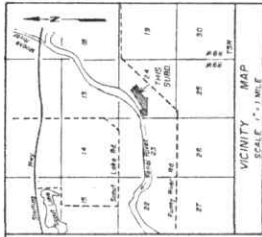


36663 River View Terrace PLAT

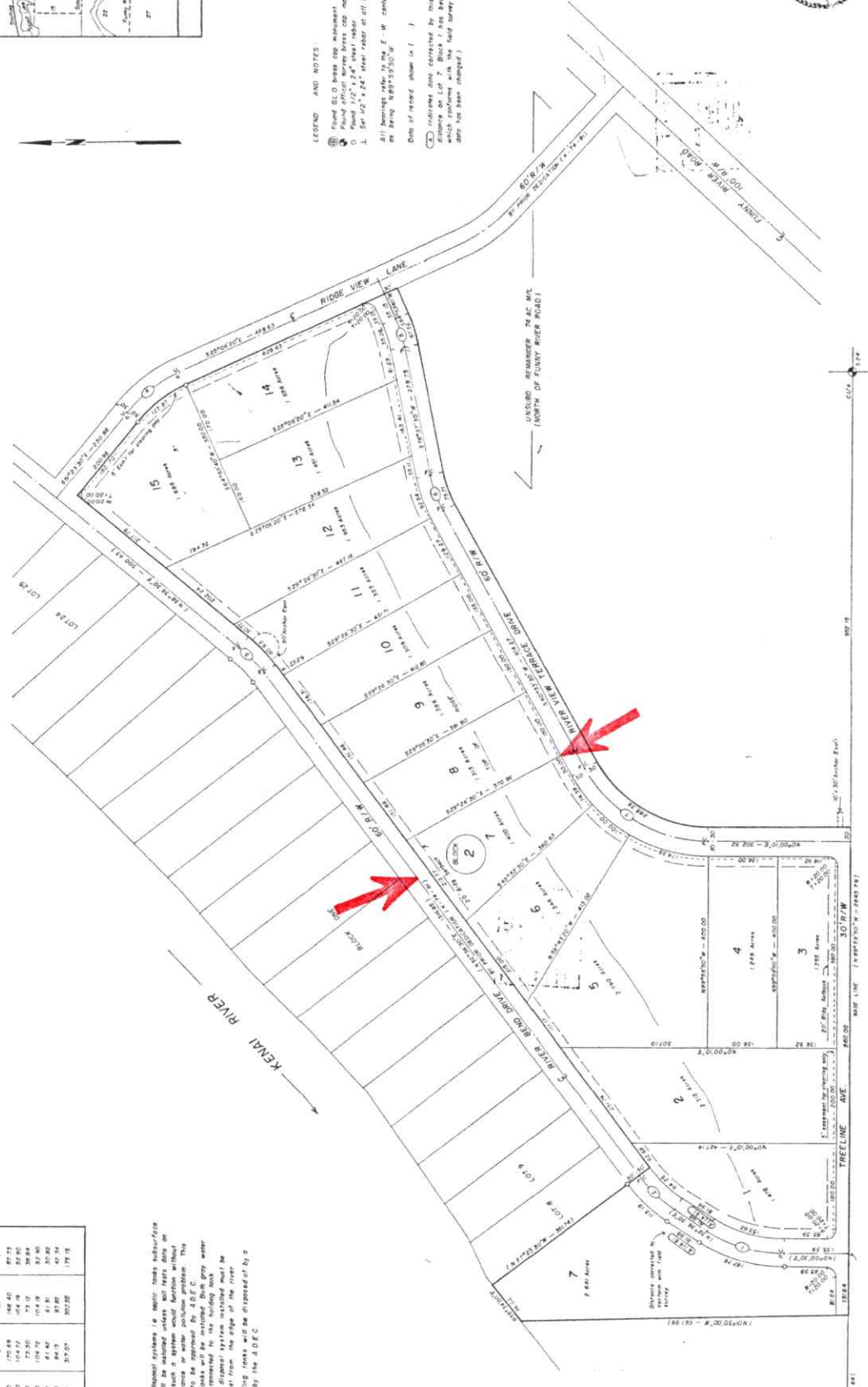
CONVEY	A.	B.	C.	D.	E.	F.	G.	H.	I.	J.	K.	L.	M.	N.	O.	P.	Q.	R.	S.	T.	U.	V.	W.	X.	Y.	Z.
1	3774.00'	700.00'	170.88'	184.40'	87.73'																					
2	2745.00'	700.00'	154.72'	174.48'	82.90'																					
3	2745.00'	700.00'	154.72'	174.48'	82.90'																					
4	2745.00'	700.00'	154.72'	174.48'	82.90'																					
5	2745.00'	700.00'	154.72'	174.48'	82.90'																					
6	2745.00'	700.00'	154.72'	174.48'	82.90'																					
7	2745.00'	700.00'	154.72'	174.48'	82.90'																					
8	2745.00'	700.00'	154.72'	174.48'	82.90'																					
9	2745.00'	700.00'	154.72'	174.48'	82.90'																					
10	2745.00'	700.00'	154.72'	174.48'	82.90'																					
11	2745.00'	700.00'	154.72'	174.48'	82.90'																					
12	2745.00'	700.00'	154.72'	174.48'	82.90'																					
13	2745.00'	700.00'	154.72'	174.48'	82.90'																					
14	2745.00'	700.00'	154.72'	174.48'	82.90'																					
15	2745.00'	700.00'	154.72'	174.48'	82.90'																					

COVENANTS

- No conventional type drainage systems or septic tank subsurface absorption systems will be installed unless well tests data on underlying strata such as shown on plat is available. This system will have to be approved by A.D.E.C.
- Only sewage holding tanks will be installed. Such grey water disposal systems will be installed only if approved by A.D.E.C.
- A minimum of 100 feet from the edge of the river.
- The contents of holding tanks will be disposed of by a method approved by the A.D.E.C.



- LEGEND AND NOTES:**
- Found GLO brass cap monument
 - Found 1/2" x 24" steel rebar monument
 - Found 1/2" x 24" steel rebar at all corners
 - All bearings refer to the E-W completion of Section 24
 - Close of record shown in ()
 - Indicates line corrected by this plat (The original distance on Lot 7, Block 1 has been corrected to 60.00 feet as per a recent survey of that lot, as other lots have been changed)



CERTIFICATE OF OWNERSHIP AND DEDICATION

We hereby certify that we are the owners of said property, and request the approval of this plat showing such easements for public utilities, roads, and so forth dedicated by us for public use.

Date: August 26, 1975

Richard B. ...

NOTARY'S ACKNOWLEDGEMENT

Subscribed and sworn before me on the 26 day of August, 1975.

My commission expires August 26, 1975

Richard B. ...

PLAT APPROVAL

Plat approved by the Commission on August 19, 1975

Stanley E. ...

**RIVER BEND RIDGE SUBDIVISION
PART TWO AND LOT 7 BLOCK 1
PART ONE AMENDED**

River Bend Development Co., Inc.
3811 Fritchfield, Asheville, N.C. 28803

SECTION 24 T5N, R9W, S1M, A4E, KEMAI
RENSSELAIRE BOROUGH

Surveyed by: McIlwain and Associates
Salem, N.C.

DATE OF SURVEY: June 21, Aug 1, 1975
SCALE: 1" = 100'
BY NO: 14-2